

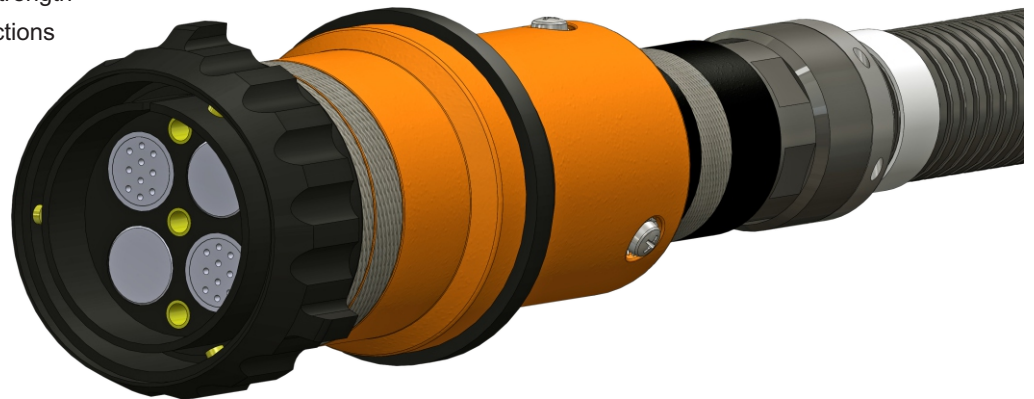
FLEXIBLE & LIGHT-WEIGHT TRANSIT SOLUTIONS



PROVEN RELIABILITY

Moltec transit solutions are designed to global industry standards and are built to surpass customer expectations on quality and performance. Safety, reliability and ease of installation come standard with every solution including custom built-to-spec wire and cable harness assemblies. Our specially modified non-metallic conduit and fitting system will help you get the job done right and in a timely manner the first time. Performance properties of Moltec solutions deliver long service life in the toughest environments:

- UL Listed, UL Recognized, and CSA/US Approved
- Ingress protection up to IP69K
- Excellent mechanical strength (compression/impact) also at low temperatures and dry air conditions
- Excellent weather and UV resistance
- Self-extinguishing with very low smoke development
- Enhanced flexibility and fatigue strength
- Shock and vibration proof connections
- EMC electromagnetic compatible
- Rodent resistance



Exterior Applications

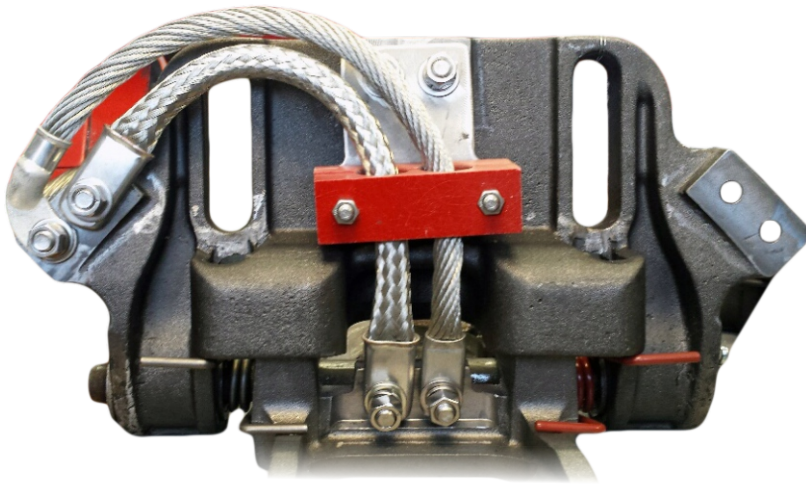
Electrical installations on the exterior of trains require the maximum level of protection against environmental elements and mechanical stresses. Our durable heavy grade conduit systems are ideal for both static and dynamic outdoor applications underneath, atop and between rail cars. Our shock and vibration proof connections ensure uninterrupted service of inter-car jumpers, couplers and bogies.



Exterior Applications

Industry regulations stipulate that materials used in passenger zones such as people movers must comply with the highest international flame, smoke and toxicity standards. Our transit solutions meet these standards with excellent self-extinguishing properties, minimal emission of smoke and toxic gases and are certified to the following:

- ASTM E 162, ASTM E 662 & ASTM E 1354
- Bombardier SMP 800-C
- Boeing BSS 7239
- DIN 5510
- NFPA 130



Railway Infrastructure

From the ballast stones to the highest signal light, Moltec solutions protect trackside installations from daily wear and tear as well as rodent attack. Our transit solutions offer enhanced UV and weathering resistance in addition to a broad temperature range. This ensures safe and reliable functioning of signals, control systems, monitoring/information systems and power supplies to high voltage rails.

