

TÜV SÜD

TÜV SÜD Commences Tests on New Talgo ICE L Trains for Deutsche Bahn

Having signed a framework contract in February 2019 for the delivery of a maximum of 100 new ICE L trains for German national railway company Deutsche Bahn (DB), the Spanish high-speed passenger train manufacturer Talgo has started the testing process with TÜV SÜD.

ICE L is a long-distance locomotive-hauled push-pull train. The coachset can consist of a combination of 9 to 21 cars. The standard configuration is 256m long and consists of one locomotive and 17 articulated cars. Each car is connected to the neighbouring car with a single-axle bogie, with double-axle bogies only at each end of the set. This gives each train 20 axles, in addition to those of the associated locomotive. Each unit will be delivered with a multi-system-electric Talgo Travca locomotive.

Talgo has commissioned TÜV SÜD to execute the complete package of tests, that are performed on the public network of Germany, Austria, Switzerland and the Netherlands. This is achieved by working in close co-operation with RailAdventure, a Munich-based rail operation company specialising in rail operations. TÜV SÜD started a full set of homologation tests on two trainsets in parallel in August. The first tests focused on safety against derailment in accordance with EN 14363. This was performed on the instrumented curved track in TÜV SÜD's rolling stock test centre in Görlitz, Germany. Tests are expected to continue throughout 2023 and 2024, and once these tests are completed, the first train of this type – tested and inspected by TÜV SÜD – is expected to begin operating in 2025.

TÜV SÜD is one of the world's leading testing, inspection and certification (TIC) companies, providing services to the rail industry from conventional rail systems to high-speed trains and metro and urban rail



Markus Kammel
Sales and Projects
Engineer at TÜV SÜD

systems. Over 400 experts from TÜV SÜD - Business Unit Rail Services, support manufacturers, operators and authorities throughout all stages of a project and all phases of a product's life cycle. To this end, TÜV SÜD maintains its own test facilities for rail applications and proprietary testing tools and holds all international accreditations and approvals needed for these activities.

Markus Kammel, Sales and Projects Engineer at TÜV SÜD and Project Lead for the testing part at Talgo project said: *“Our comprehensive service portfolio and extensive testing facilities, across multiple locations, optimises our capacity to offer the full suite of testing as well as certification services, which enables us to provide swift services and processing from a single source. We are really excited to be working on this industry-leading programme to modernise and expand the German high-speed train fleet, serving both domestic and international routes.”*

About TÜV SÜD

TÜV SÜD is a trusted partner of choice for safety, security and sustainability solutions. It specialises in testing, certification, auditing and advisory services. Through more than 26,000 employees across over 1,000 locations, it adds value to its customers, inspiring trust in a physical and digital world.





Your partner for safe, secure and reliable railway systems globally

**Add value.
Inspire trust.**

tuvsud.com



Read more

Add value.
Inspire trust.



Rail Services

Our fields of expertise



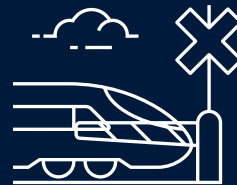
Infrastructure

- Signalling Systems
- Track and Components
- Power Supply
- Fire Protection
- Emergency and Rescue Concepts



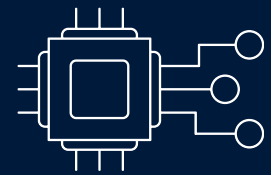
Rolling Stock

- Vehicles
- Component and Systems
- On-track and Crash Tests



Complete Railway Systems

- Turnkey Projects
- Operation and Maintenance
- Safety Management



Rail Automation

- Hardware and Software
- AI Applications
- IT Security

Our services

Inspection



Certification



Assessment



Training



Testing



Advisory

