

J. LANFRANCO & Cie

Quality Control at the Heart of the Company's Manufacturing

The desire for support and service has always been part of the DNA of J. LANFRANCO & Cie.

The company has recently acquired new inspection machines that further enhance its ability to ensure the highest standards of quality in its products.

J. LANFRANCO is the only French nut manufacturer to be able to offer the validation of its parts in its manufacturing process. We now have even more efficient means of investigation. With this latest equipment, our company reaches the same level of expertise as private laboratories.

Our safety fasteners are designed to meet the highest standards in the railway sector.

These investments make our company one of the French flagship manufacturers of self-locking safety systems in compliance with standards NF EN ISO 898-2, NF EN ISO 3506-2, NF EN ISO 2320, NF E25-035-2.

The AUTOMATICA, our new measuring bench can perform torque/tension tests from M5 to M39 according to quality classes. We have a new four-way sensor to measure the under-head and in-thread coefficient for dimensions ranging from M16 to M39. We also carry out tests on imperial dimensions. With the level of precision of this bench, we can accurately measure the performance of the surface treatments and/or Filmogène (top coat) offered by our company. This acquisition ensures that our customers comply with the friction coefficients specified in the order.

We recall the importance of controlling the coefficient of friction, because it is directly related to the torque and tension in the assembly.

The ZEISS binocular machine by its magnification capacity (x1000) and the integration of measuring software, allow us to directly control the protection thicknesses on our products.

This enables us to ensure that our products comply with the strictest constraints.

The measurement of the minimum thickness on the workpiece ensures a good salt spray test result (red rust resistance) of the expert products. This test is a destructive test.

These acquisitions have enabled us to strengthen our expertise as a manufacturer of safety fasteners.

Through these investments and the company's involvement in the development of new international standards, J. LANFRANCO demonstrates its commitment to remain at the forefront of innovation and to be a major player in the global safety fasteners industry.

These acquisitions represent significant advancements for J. LANFRANCO, allowing them to strengthen their expertise as a manufacturer of safety fasteners. By incorporating these new inspection machines into their quality control processes, J. LANFRANCO guarantees the reliability, durability and performance of their safety fasteners.

J. LANFRANCO's dedication to remaining at the forefront of manufacturing excellence solidifies its position as a major player in the global safety fasteners industry.

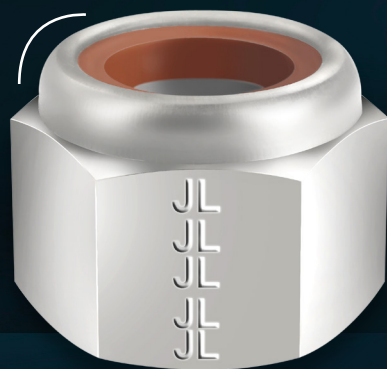
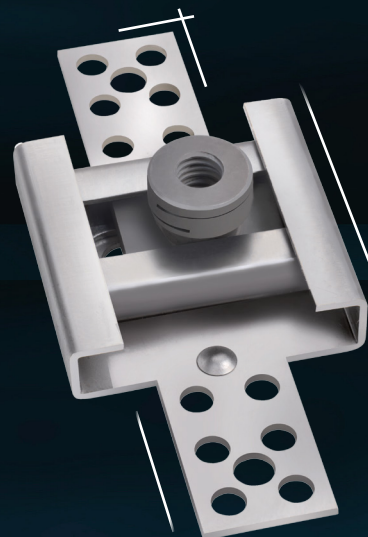
www.lanfranco.fr/en





J. LANFRANCO & C^{IE}

TOP QUALITY LOCKNUTS FOR
CRITICAL JOINTS



PARIS

37, Avenue de Saint-Mandé - 75012 PARIS
Tel.: +33 (0)1 40 04 92 30
commercial@lanfranco.fr - www.lanfranco.fr

J. LANFRANCO NUTS

HOW DO THEY WORK?

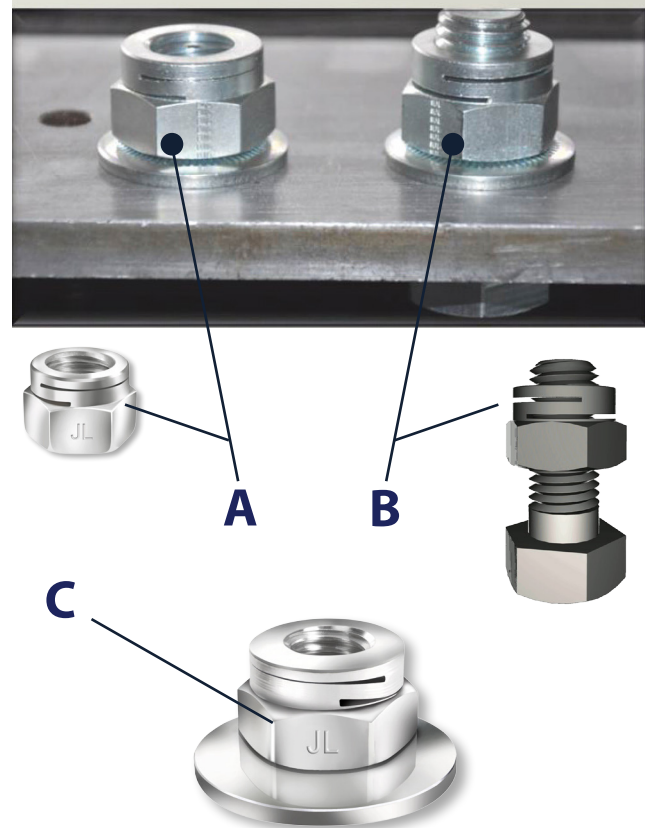
The locking device is ensured by the two slots located on the turret part of the nut. Each slot is de-picked by a precise manufacturing process (A).

Once the nut is fitted on the screw, the slots are pushed back open to their original shape and grip against the flank of the thread of the screw which creates the torque (B).

This form of self-locking does not damage the screw and allows a minimum of 5 installations.

A unique all-metal piece ensuring optimal performance in temperature conditions ranging from -70°C to $+500^{\circ}\text{C}$.

In the case of the ERM nut (C), the integrated spring washer becomes a single piece to ensure better tension in the screw, better distribution and continuous contact, ideal for electrical bolting connections.



TRACK



CATENARIES



ROLLING STOCK