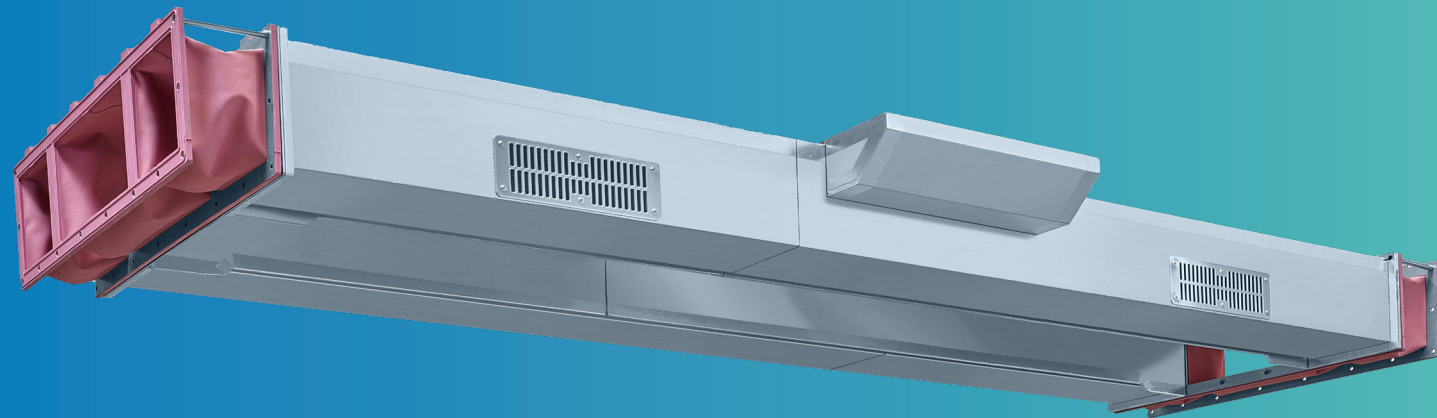







# AIR DUCT SYSTEMS FOR THE RAILWAY INDUSTRY

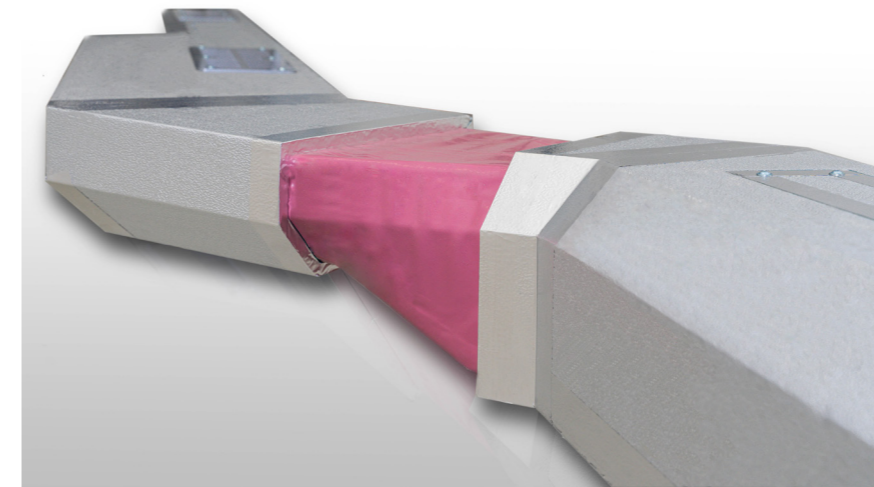


**Dynamic. Different. Dedicated.**

## AIR DUCT SYSTEMS

### HIGHLIGHTS

-  Individually manufactured lightweight air duct systems
-  Adaptable to any vehicle geometry
-  Energy saving insulating material
-  Possibility to expand the air duct system with MöllerWerke fabric expansion joints
-  Certified according to international fire safety standards

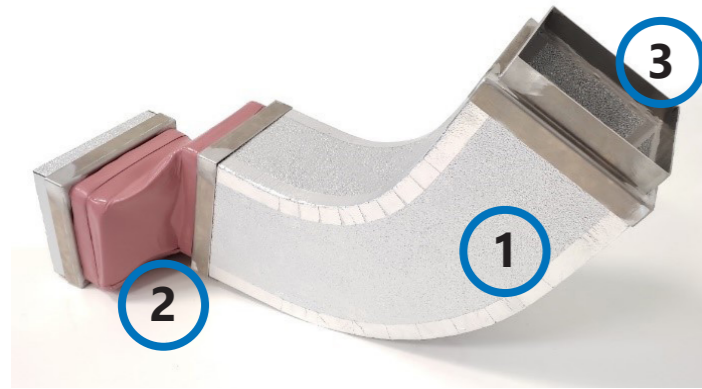


### PRODUCT DESCRIPTION

Lightweight HVAC air duct systems provide uniform air circulation in air-conditioned passenger interiors. MöllerWerke offers in combination with its flexible fabric expansion joints complete air duct systems, which are manufactured individually according to customer requirements.

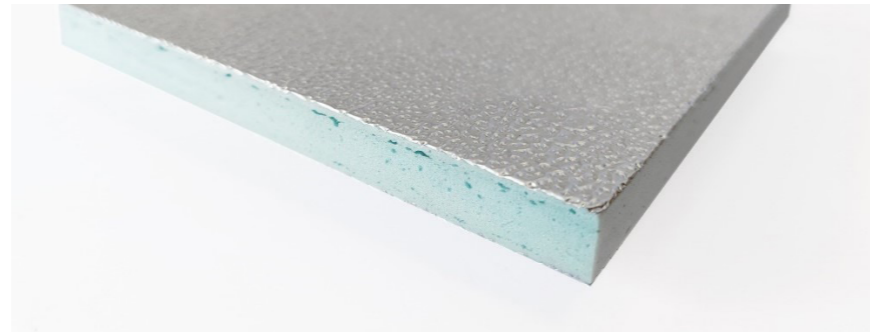
The 12 mm thick sandwich material, which has an insulating core, is made of PU foam laminated with aluminium foil on both sides. The material meets the fire protection standard according to EN 45545-2 and is classified according to R1/HL3. The air duct systems have a high adaptability to temperature fluctuations, as these have been developed for operating temperatures from -30°C to +80°C.

## Design and material characteristics

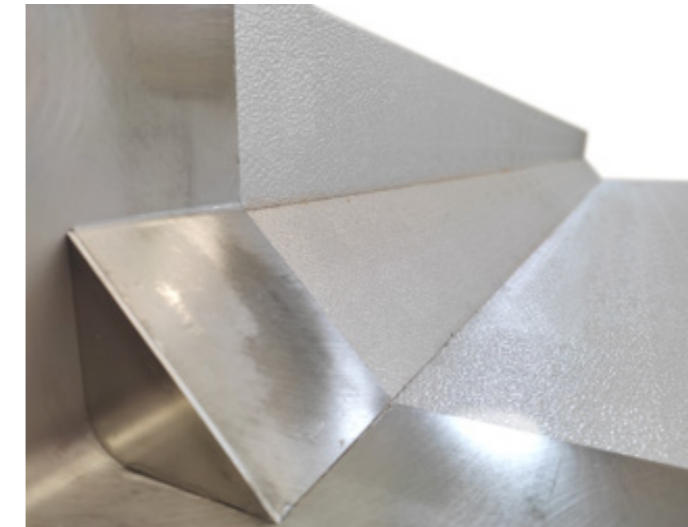


- ① Air duct made of sandwich material
- ② Flexible molded part made of VMQ-silicone aramid fabric
- ③ Individual metal flange according to the connection geometry

- 12 mm sandwich material consisting of:  
Aluminium foil and PU foam
- Density of the sandwich: 60 kg/ m<sup>3</sup>
- Thermal conductivity:  $\lambda$  0,022 W / (mK)



## Standards and parameters



### Fire protection classes

- DIN EN 45545-2
- R1 / HL3 classification

### Resistance

- Resistance to cold -30°C
- Cold-breaking temperature -50°C
- Max. temperature +80°C

### Further certifications

- DIN EN 6701

The air ducts are tested in our own test laboratory according to DIN EN 61373. In addition, further tests can be organised according to international standards as well as customer-specific requirements.



**MöllerWerke GmbH**

Kupferhammer

33649 Bielefeld

T +49 521 4477-0

[info.moellerwerke@moellergroup.com](mailto:info.moellerwerke@moellergroup.com)

[www.moellerwerke.de](http://www.moellerwerke.de)