

Gmeinder



110 Years of Gmeinder's Gears

GGT GMEINDER GETRIEBETECHNIK GmbH (hereafter referred to as Gmeinder Getriebe) from Mosbach swears by its truly rich history.

It was founded in 1913 by August Steinmetz and Anton Gmeinder, who started the company Steinmetz Gmeinder KG. Six years later, the former retired, and the company was renamed Gmeinder & Cie, with a specialisation in the production of small locomotives. It launched Germany's first diesel locomotive (1921) and developed and produced its own gearboxes. In 1932 it became the exclusive supplier of shunting locomotives for the German railways.

Although the company changed its name several times during the 20th century, it never abandoned the Gmeinder name. At the beginning of the 21st century, it sold its locomotive division (2003) and turned its attention to the production of gearboxes for special railway vehicles and locomotives. Today, in addition to these, it supplies gearboxes for diesel multiple units, owns complete bevel gear technology and is one of the most important companies that repairs all brands of gearboxes for rolling stock. It has added GGT-GearSaver® remote diagnostics to its already broad product portfolio.

Gmeinder Getriebe is among the medium-sized companies with more than 100 employees and an annual turnover of approximately EUR 20 million. During its existence, it has delivered around 80,000 gearboxes of its own production to the world. In 2019, it became part of the engineering group Wikov Industry, which produces, in addition to other items, gearboxes for rolling stock. Wikov focuses on mass production of gearboxes and drives for trams, electric suburban units and subways. In this way, Gmeinder and Wikov complement each other. With a global distribution

network, Gmeinder Getriebe is able to reach all key territories.

Strengthening Its Position

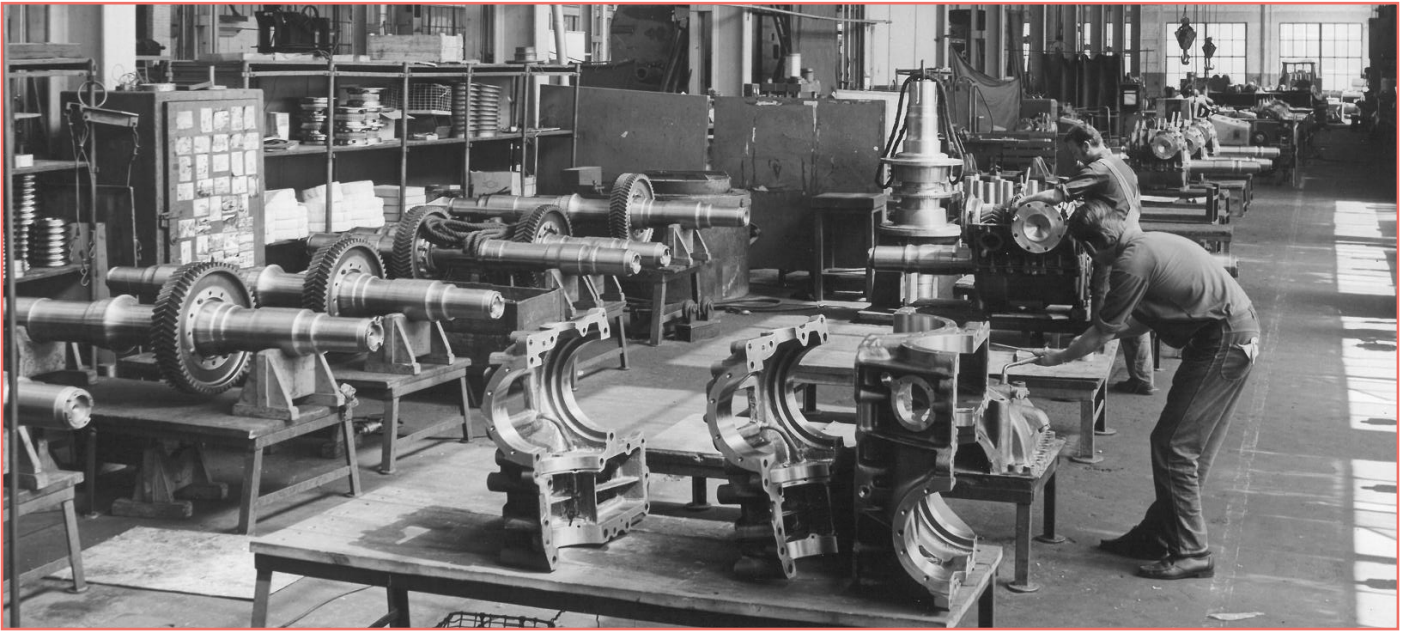
A strong partner enables Gmeinder Getriebe to achieve its bold plans. Gmeinder Getriebe is a market leader in gearboxes and drives for special purpose vehicles, railway cranes, track inspection vehicles, tampers, machines for track construction and renewal, maintenance vehicles, etc. Decades of experience and know-how of the Gmeinder Getriebe company, passed down from generation to generation, is your guarantee of quality and reliability.

Last year, the company introduced a comprehensive range of gearboxes specifically for the Yellow Fleet, i.e. rail vehicles for maintenance and repair work on railways or for clearance work on railways.

The GGT 224S range of shiftable gearboxes for cranes and multi-purpose vehicles was the first one. This is a two-stage helical gearbox with two different ratios optimised for cold environments (-40°C). The gearbox is equipped with a switching mechanism for the three positions: travel mode, working mode and position for towing. This type of gearbox is not powered by an electric traction motor, as is common on most rolling stock, but by one or two hydrostatic motors on one or both sides of the gearbox.

Another type is the GGT 263S/630 two-stage helical gearbox with a fixed gear ratio. The gearbox housing is made of aluminium alloy for the necessary weight reduction. The gearbox is optimised for very low working speeds under full load (< 1 km/h).

The GGT 275 two-stage helical gearbox range has undergone another major innovation. The GGT 275 gearbox series allows the use of several fixed gear



ratios without changing the size of the gearbox housing. Three different fixed gears and two motor interfaces can be used. This gearbox series has been optimised for very low working speeds under full load (< 1 km/h). It is also important to note that the gearbox is available in two versions, one standard version directly mounted on the axle shaft and a suspended version with hollow shaft in the gearbox and a coupling to the axle shaft.

Multi-Brand Gearbox Service Expert

With the latest technology and decades of experience, Gmeinder Getriebe offers technical, cost-effective and quality-controlled services. Gmeinder Getriebe proves its competence, its know-how and its flexibility every day. Its new service workshop provides optimal conditions for the handling of the complete wheelset. The scope of services includes analysis and investigation inspection, general inspection, all-around carefree package, modification and adaption, non-destructive examination and education and training. In the service centre, you can find all the well-known brands of gearboxes for rail vehicles.

GGT-GearSaver® – Condition-Monitoring System

Gmeinder gearboxes could be equipped with a remote condition-monitoring system that was developed in-house at Gmeinder Getriebe. GGT-GearSaver® is a unique system using only one complex sensor that is capable of monitoring the operating temperature of oil, relative oil humidity, oil level, oil conductivity

and ferromagnetic particle contamination. This system brings the customer a completely new and measurement databased solution for preventive maintenance, which saves valuable resources, minimises or even prevents damage incidents and reduces maintenance costs.

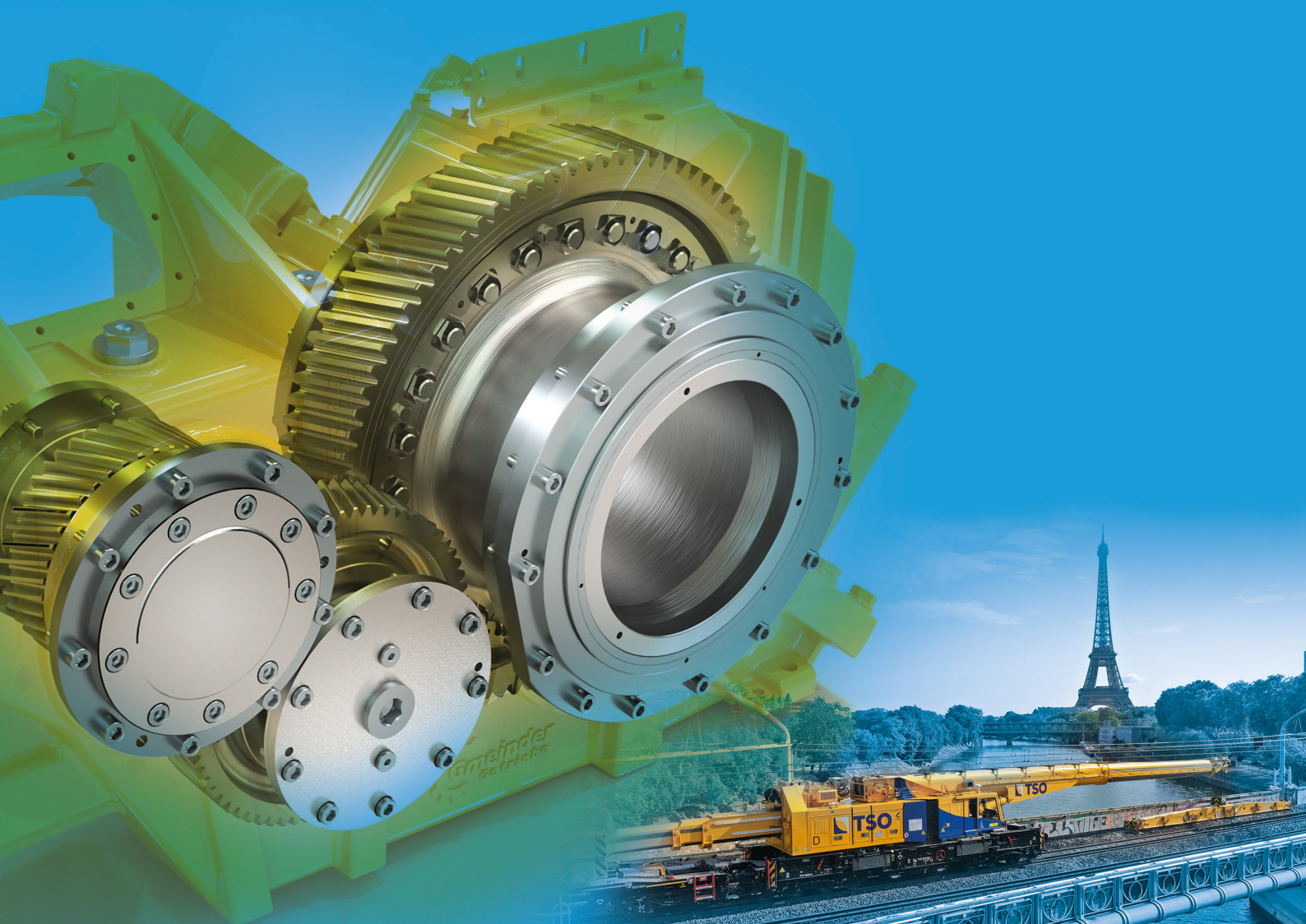
Green for Investments in All Directions

In the year in which the company celebrates 110 years of its existence, Gmeinder Getriebe started with massive investments in order to continue its healthy growth. Investments are going into technologies – whether in production, logistics, assembly or testing. Gmeinder Getriebe is also stepping up its marketing and sales activities and targeting new collaborators, even beyond its region, in order to be able to fulfil its bold plans. This is today's Gmeinder Getriebe. World of Rail Drives.

For more information contact GGT GMEINDER
GETRIEBETECHNIK GmbH:

www.gmeinder.com
+49 6261 806 121
info@gmeinder.de





Gearboxes & Drives for Yellow Fleet

World of Rail Drives

www.gmeinder.com



See our new video:
GGT-GearSaver[®]
Condition Monitoring System