

Position Sensor PS210

Rugged | Easy to install | Long life



Position

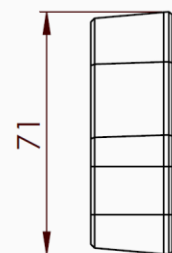
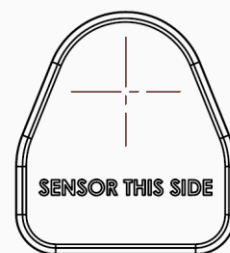
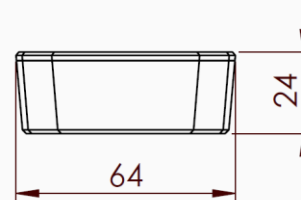


Motion



Vibration

- The PS210 Position Sensor provides accurate, power efficient & robust measurements without interference from noise, dust, color or direct or indirect light.
- The small self-contained battery powered sensor offers years of sensing positions, motion and vibration in a range of industrial applications.
- An easy to install “peel and stick” option provides rapid & cost-effective retrofit applications. It’s small size and lightweight maximize installation flexibility while its robust construction means years of operation in the harshest environments.
- Communicating through Bluetooth v5 long range or proprietary mesh, the PS210 can communicate measurements to customers IoT platforms via fixed or mobile gateways as well as through smartphones.



All dimensions in mm

CATEGORY	FEATURE	SPECIFICATION
Sensors	Distance	Range from 20mm to 2500mm Accuracy ± 2.5 mm at 2500mm (99.7% confidence typical, dependent on target material and environment) Update frequency configurable (from milliseconds to hours)
Wireless	Bluetooth 5	Bluetooth Low Energy (BLE) Beacon Bluetooth Long Range (CODED PHY) Beacon update frequency configurable (from seconds to hours) Proprietary Mesh Network (Optional)
	NFC	(Optional)
	Antenna	Integrated External (Optional)
Software	Data access	Mobile App - Android with local display & cloud upload IoT Gateway - cloud upload
	OTA Update	Mobile App - Android - Configuration and / or Firmware Update (Pending) IoT Gateway - Configuration and / or Firmware Update (Pending)
Power system	Primary battery	Lithium Thionyl Chloride 8.5 W/h non-replaceable cell Up to 10 years (configuration dependent)
Enclosure	Polycarbonate	High performance, extremely robust, lightweight and impact resistant at low temperatures
	Rating	IP67 - Sealed for environmental protection
	Installation	High-strength double-sided adhesive tape Self taping screws or zip tie (Optional)
Environmental	Testing	Operating temperature -40° to 85° C Altitude -60m to 3600m Sunlight (60% operating life @ 1120 W/m^2) Humidity (Non-Condensing) 40% to 95% Vibration 2.5 G peak (10 Hz to 1000 Hz) Mechanical Shock 10 G peak (11 msec pulse) Salt Fog (MIL-STD-810E) Rain (MIL-STD-810E) Sand (MIL-STD-810E) Dust (MIL-STD-810E)
	Compliance	ROHS, AAR S9401, SAEJ1455 (Pending)
Regulatory	Approvals	FCC, IC, CE and Bluetooth SIG (Pending)
Warranty		1-Year warranty



Address
515 S Franklin St, West Chester, PA 19382 USA



Phone
+1 (484) 881 3499



Email
hello@relyq.com



Proprietary & Confidential Pre-release Information - May be subject to change

© relyQ Inc. (2020) Visit us at www.relyq.com