

 Directory

< Rolling Stock & Works Vehicles

# BAULTAR

## Advanced Flooring System

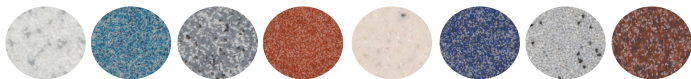
Baultar is a Canadian company that creates and manufactures innovative products for the transportation industry (railway freight, railway public transit, buses, infrastructure).

Baultar's flooring division offers an advanced flooring system called Abrastop™. The Abrastop™ family of composite products, specifically designed for the transportation industry, ranges from floor coverings to complete

flooring systems. It integrates many different options that can be tailor-made according to the technical and design needs of clients. These flooring solutions have two main objectives: to offer superb durability that reduces

maintenance requirements and life-cycle costs, and to simplify product procurement and vehicle manufacturing by offering an all-in-one solution that integrates functions seamlessly, maximising the value for the client.

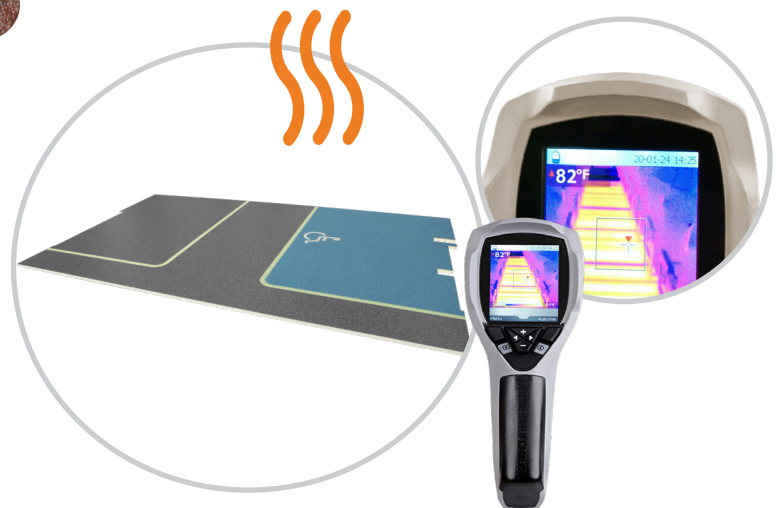
### Customisable Colours



### Flooring Options

#### Heating

The advantages of an Abrastop™ foam radiant heated floor include: uniform temperature distribution throughout the whole vehicle, superior comfort, thermic inertia that keeps passengers warm even when doors open, elimination of the discomfort caused by drafts from forced-air systems, and energy savings.



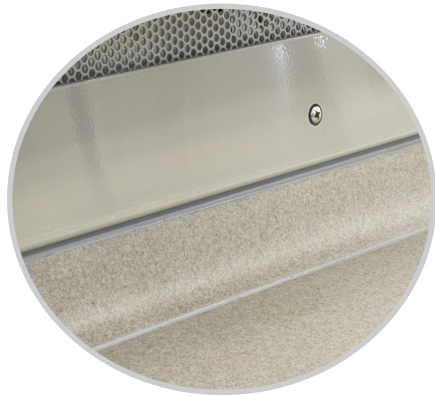
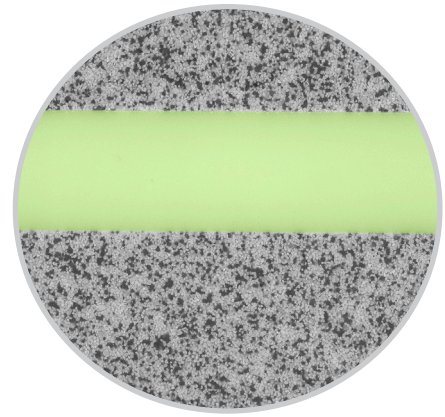
#### Logos

Logos of any kind or colour can be integrated in the flooring. These integrated logos are manufactured using the same materials as the flooring panels. Sizes and shapes can also be adjusted for any type of request.



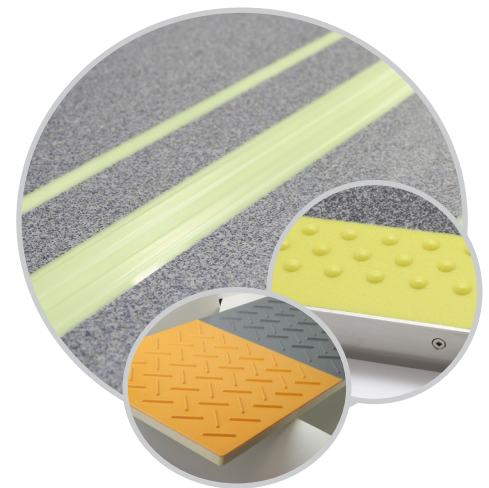
### Photoluminescent Bands

Photoluminescent bands guide and demarcate specific areas with integrated passive high-performance photoluminescent lighting (HPPL) – staircases, walkways, doors or specific areas with a particular function (such as an area for storing bikes) are just some examples.



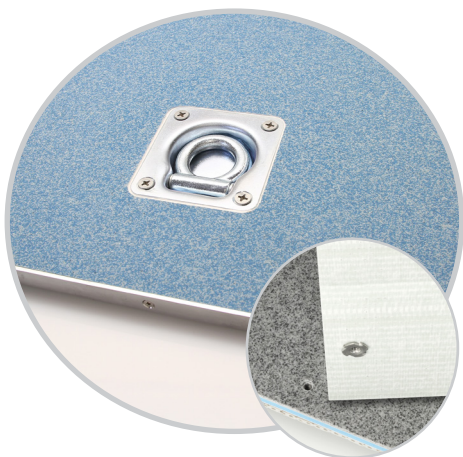
### Cove Mouldings

A proper finishing touch and a streamlined look. Can be used for anything from meeting functional needs (such as covering joints, transitioning between flooring and walls, and facilitating cleaning) to serving more decorative purposes, such as fitting different styles.



### 3D Bands and Surfaces

3D bands and surfaces alert, guide and demarcate. Raised profiles of many different kinds help alert passengers to upcoming hazards, provide them with guidance for safe passage or exit, and / or delimit a specific area of a vehicle.

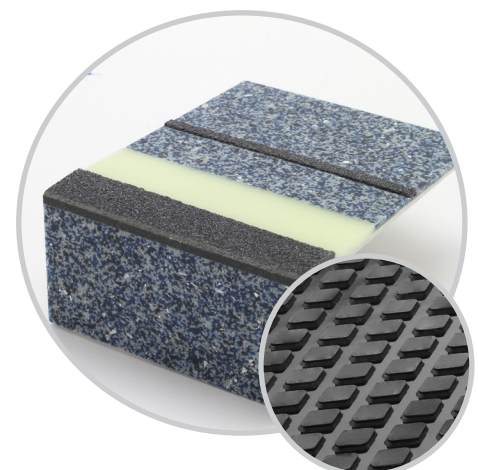


### Inserts

Adding even more durability and adaptability for specific uses. Trap doors, supports, reinforcements and mechanical fastening inserts, are just a few of the possibilities for fulfilling specific needs with metal pieces.

### AddGRIP Surfaces

In certain access areas where additional anti-slip properties are needed – such as stairs or entrances – areas and / or bands with custom-made patterns can be integrated. Also, the surface grit can be adapted using a variety of different materials.



# ADVANCED FLOORING SYSTEM



All-in-one  
Customisable  
High-performance

**BAULTAR**

110 J.E. Lemieux, Windsor, QC J1S 0A4 CANADA  
+1 819 845 7110 marketing@baultar.com www.baultar.com