



# Electronics Repair

## BAR CODE READERS

Allen Bradley  
2755 Series  
Sick Optic  
CLV-260/CLV-290  
Symbol

## CNC CONTROLS

Allen Bradley  
7300/8200/8500/8600  
Series • 9/Series  
Fanuc/General  
Numerics  
15T/18T  
General Electric  
550/1050/2000 Series  
Modicon  
2184/3220/3240 Series

Siemens  
System 3

Kearney & Trecker  
Gemini D17

## DISPLAYS

Borroughs  
General Electric  
IEE/Argus

## FASTENING SYSTEMS

Atlas-Copco  
Tensor

Beta Tech  
SC-FSCX/SC-FSCX  
SC-FSC3

GSE  
CS400/CS50/ CS4000  
M290

Ingersol Rand  
Micro Tas  
Stanley  
T700/T801

## INDUSTRIAL CONTROLS

Barber Colman  
Bryant  
Cobilt  
Cutler Hammer  
Delta Tau  
Firing Circuits  
Gisholt  
Gleason  
Heald  
Hurco  
Icon  
Landis  
Moog  
Pegasus  
RVA  
Rybett  
Sciaky  
Vega

## LIGHT CURTAINS

Data Instruments  
Dolan-Jenner  
Honeywell  
Opcon  
Pinnacle Microguard  
Sick Optic  
STI  
MS 4100/4300/4440 • OMC-2

Triad

## METAL DETECTORS

LOMA  
Superscan

## NC CONTROLS

Bendix  
Cincinnati Milacron  
General Electric  
Giddings & Lewis  
Jones & Lamson  
Kearney & Trecker  
Pratt & Whitney  
Sundstrand  
Warner Swasey  
Westinghouse

## PRESS LOAD MONITORS

IDC  
TM 885 HK

## PROGRAMMABLE CONTROLLERS

Allen Bradley  
IMC 120/121/123  
PLC 2/3/4/5  
SLC 100/150/500  
1791 Block I/O  
Cincinnati Milacron  
APC 1/500  
GE Fanuc  
Micro-90 • Series 1/3/6  
Series 90/30 • Series 90/70  
Genius I/O • Logitrol 500

Honeywell  
IPC 90/620

Mitsubishi  
Melsec A

Modicon  
Micro 84/084/184/384  
484/584/884/984  
PC984

Omron Reliance  
Automate 15/20/30/35/40  
Automax/DCS 5000

Siemens  
PLC-130WB  
S5-100U/115U/135U/155U

Square D  
SY/MAX 100/300/400  
500/600/650/700

Texas Instruments  
5TI • 300/500/510/520/530  
PM550

## TAPE READERS

Addmaster  
Cincinnati Milacron  
Decitek  
Digitronics  
Eeco  
General Electric  
Ghielmetti  
Oktronics  
PSI  
Remex  
Slo-Syn  
Tally

## TERMINALS

Aydin  
ABB  
Allen Bradley/Panelview  
Ball Brothers  
Bailey  
Bosch  
Conrac  
Dotronics  
Eaton/IDT  
Fanuc  
General Electric  
Honeywell  
Intercolor  
Lucas Deeco  
Metra  
Mitsubishi  
NEC  
Nematron  
Sony  
TCP  
Xycom

## TIMERS

Taylor Instruments  
58432-401-04

## WELDER CONTROLS

Hobart  
LTEC  
Lincoln Electric  
Medar  
Miller  
Nadesco  
Pertron  
Robotron  
Sciaky  
Square D  
EQ5100/5230/5240/5300  
Weltronic

Call us for a quote!  
800.325.4774



## PSI REPAIR SERVICES, INC.

©2020 PSI Repair Services, Inc., is a subsidiary of Phillips Service Industries, Inc.

RSI-13-107 REV 3/05/2020

United States  
11900 Mayfield  
Livonia, Michigan 48150-1710  
(800) 325-4774

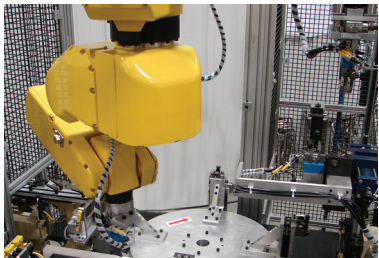
Canada—Ship to:  
PSI Repair Services, Inc.  
C/O WWD - Cole International Inc.  
3950 Malden Road  
Windsor, Ont. CN N9C 2G4  
(800) 325-4774

Canada—Submit Payments to:  
PSI Repair Services, Inc.  
P.O. Box 21073  
Windsor, Ont. CN N9B 3T4

psi-repair.com



ISO 9001:2015  
CAGE CODE 5N884



Robotics Repair

**ELECTRICAL**

- Controls
- Encoders/Resolvers
- Motors
- Pendants
- Displays
- Drives

**MECHANICAL**

- Ball Screws
- Bearings
- Cycloidal Drives
- Cylinders
- Harmonic Drives
- Servo Valves
- Wrists

**MANUFACTURERS  
INCLUDE...**

- ASEA
- Adept
- Arobotech
- Canon
- Cincinnati Milacron
- DeVilbiss
- Fanuc
- GMF
- Genmark
- Graco
- Honda
- Kawasaki
- Kuka
- MicroVision
- Prab
- Schunk
- Sumitomo
- Unimate
- Zenith

Call us for a quote!

**800.325.4774**



**PSI REPAIR SERVICES, INC.**

©2020 PSI Repair Services, Inc., is a subsidiary of Phillips Service Industries, Inc.

RSI-13-107 REV 3/05/2020

**United States**  
 11900 Mayfield  
 Livonia, Michigan 48150-1710  
 (800) 325-4774

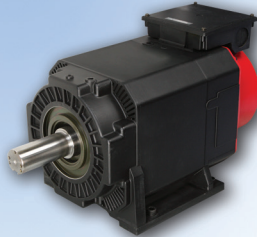
**Canada—Ship to:**  
 PSI Repair Services, Inc.  
 C/O WWD - Cole International Inc.  
 3950 Malden Road  
 Windsor, Ont. CN N9C 2G4  
 (800) 325-4774

**Canada—Submit Payments to:**  
 PSI Repair Services, Inc.  
 P.O. Box 21073  
 Windsor, Ont. CN N9B 3T4

[psi-repair.com](http://psi-repair.com)



ISO 9001:2015  
 CAGE CODE 5N884



## Motion Control Repair

### AC & DC MOTOR DRIVES AND CONTROLLERS

Allen Bradley  
 Bridgeport  
 Brown Boveri  
 CSR/Contraves  
 Cleveland Machine  
 Culter Hammer  
 Eaton  
 Emerson  
 Fanuc  
 General Electric  
 AC/DC 2000  
 HI-AK  
 Siltron Analog/Digital  
 Speed Variator  
 Valutrol  
 Gettys/Gould  
 ICC Gould  
 Indramat  
 Inland  
 Louis Allis  
 MCS  
 Magnetek  
 Ormec  
 PTI  
 Pacific Scientific (PacSci)  
 Parametrics  
 Pratt  
 Reliance  
 Auto Max • Flex Pak  
 Max Pak Plus Min Pak  
 Sanyo Denki  
 Servo Dynamics  
 Siemens  
 Square D  
 Telemecanique  
 Toshiba  
 Vee-Arc  
 Vexta  
 Warner Swasey  
 Westamp  
 Westinghouse  
 Yaskawa

### AC & DC SERVO MOTORS

ASEA  
 Allen Bradley  
 Baldor  
 Baumuller  
 Brown Boveri  
 CEM  
 CSR  
 Chiron  
 Contraves  
 Custom Servo Motors  
 Electro-Craft  
 Emerson  
 Fanuc  
 Franz Kessler  
 GMF  
 General Electric  
 General Numeric  
 Gettys  
 Gould  
 Hammelmann Corp.  
 Hammond  
 Hanning Elektro  
 HK Porter  
 ICC Gould  
 Indramat  
 Inland  
 Kawasaki  
 Kollmorgen  
 Kuka  
 Lincoln  
 Louis Allis  
 Magnetek  
 Mannesmann-Demag  
 Mavilor  
 Midwest Thermal Spray  
 Modicon  
 Moog  
 Motion Control Systems  
 OSAI  
 Oriental  
 PMI  
 Pacific Scientific  
 Porter Peerless  
 Reuland  
 Reliance  
 SEM  
 Siemens  
 Warner & Swasey  
 Westinghouse

### AGV's

Barrett  
 Fata  
 Telemecanique

### ELECTRONIC TORQUE WRENCHES

Atlas-Copco  
 Cooper  
 GSE  
 Ingersoll-Rand  
 Stanley

### ENCODERS

Allen Bradley  
 Anilam  
 Avtron  
 BEI  
 Baldwin  
 Balluff  
 Celesco  
 Coleman  
 Condec/Unimate  
 Data Technology  
 Datex  
 Disc Instruments  
 Dynamics Research  
 Dynapar  
 ECCI  
 Elm Systems  
 Encoder Products  
 Fanuc  
 Heidenhain  
 Hohner  
 Indramat  
 Kuka  
 Kuroda  
 Leine & Linde  
 Litton  
 PSI  
 RSG  
 Renco  
 Sanyo Denki  
 Siemens  
 Stegmann  
 T&R  
 Tamagawa  
 Trump Ross  
 Unico  
 Unimate  
 Warner Swasey  
 Yaskawa

### HOISTS

ARO  
 Coffing  
 Demag  
 Duff Norton

### POWER SUPPLIES

ABB  
 AC-DC  
 Acme  
 Allen Bradley  
 B&K Precision  
 Bailey  
 DEC  
 Datapower  
 Fanuc  
 General Electric  
 Gould  
 HC  
 Hewlett Packard  
 LH Research  
 Lambda  
 Modicon  
 NCR  
 Pioneer Magnetics  
 Powermate  
 Powerone  
 Powertec  
 Sola  
 Sorensen  
 Standard Power  
 Texas Instruments  
 Unimate

### TACHS AND RESOLVERS

Clifton  
 Electrocraft  
 Fasco  
 General Electric  
 Harowe  
 Sierracin Magnadyne  
 Singer Kearfott

### TRACER HEADS

Moog

Call us for a quote!  
 800.325.4774



## PSI REPAIR SERVICES, INC.

©2020 PSI Repair Services, Inc., is a subsidiary of Phillips Service Industries, Inc.

RSI-13-107 REV 3/05/2020

United States  
 11900 Mayfield  
 Livonia, Michigan 48150-1710  
 (800) 325-4774

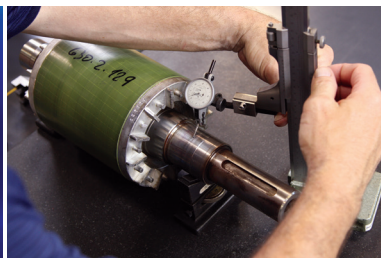
Canada—Ship to:  
 PSI Repair Services, Inc.  
 C/O WWD - Cole International Inc.  
 3950 Malden Road  
 Windsor, Ont. CN N9C 2G4  
 (800) 325-4774

Canada—Submit Payments to:  
 PSI Repair Services, Inc.  
 P.O. Box 21073  
 Windsor, Ont. CN N9B 3T4

[psi-repair.com](http://psi-repair.com)



ISO 9001:2015  
 CAGE CODE 5N884



## ACTUATORS ROTARY/LINEAR

Andco  
Bird-Johnson  
CAE  
DeVilbiss  
Duplicomatic  
Ex-Cell-O  
Flo-Tork  
Graco  
Helac  
Hydroline  
Lewa  
Logansport  
MTS  
Micro Precision  
Miller  
Moog  
Motion Controls  
Parker  
Rotac  
Supfina  
Surftran  
Team  
Tork-Mor

## CYLINDERS

Ace Controls  
American Crane  
Anker-Holth  
Caterpillar  
Clark  
Commercial Shearing  
Dart  
Dowty  
Enerpac  
Euclid  
Gallion  
Hanna  
Heil  
Hyco  
Hydroline  
Hyster  
International  
Joy  
Lee-Norse  
Letourneau  
Link Belt  
Michigan Clark  
Miller  
Parker Hannifin

Pressotechnik  
Schrader Bellows  
Terex  
Tiny Tim  
Unimation  
Unit Rig  
Wabco

## HYDRAULIC MOTORS PISTON/VANE/GEAR

Adan  
Bendix  
Bignozzi  
Bosch  
Brueninghaus  
Charlynn  
Cincinnati  
Commercial Shearing  
Daikin  
Danfoss  
Delaval  
Delavan  
Delta  
Denison  
Donzelli  
Double A  
Dowmax  
Dowty  
Dynapower  
Dynex/Rivett  
Eaton  
Energy  
Flender  
Fujitsu  
Gen Tech  
H.P.I.  
Hagglund  
Hartmann  
Hawe  
Houdaille  
Hydreco  
Hydrokraft  
Hydromatik  
Hydura  
IMO  
Icon  
John Barnes  
Jones & Lamson  
KYB  
Kline  
Lamina  
Linde  
Lucas  
MTS

Moog  
Motion Controls  
Nachi  
Nichols  
Nippon  
Nutron  
Oilgear  
Olsen Controls  
Orbmark  
Parker  
Planet  
RVA  
Racine  
Rexroth  
Rogers  
SAI  
Staffa  
Sumitomo  
Sundstrand  
TRW/Ross  
Vickers  
Voith  
Volvo  
Webster  
White  
WSI

## HYDRAULIC PUMPS PISTON/VANE/GEAR

Allweiler  
Bosch  
Brueninghaus  
Cessna  
Cincinnati  
Commercial Shearing  
Continental  
Daikin  
Dake  
Delaval  
Delavan  
Delta  
Denison  
Double A  
Dowty  
Dynapower  
Dynex/Rivett  
Eaton  
Enerpac  
Flygt  
Fife  
Gorman-Rupp  
Goulds  
Greenlee  
Gusher  
HPI  
HPM  
Hawe

Hele Shaw  
Hydrastar  
Hydraulik-Ring  
Hydreco  
Hydrokraft  
Hydromatik  
Hydura  
ITT-Jabsco  
John Barnes  
John Deere  
Kline  
Kobe  
Kracht  
LFE  
Leistritz  
Linde  
Lucas  
MTE  
Nachi  
Northern  
Oilgear  
Parker  
Pioneer  
Poclair  
RVA  
Racine  
Rexroth  
Robbins & Meyers  
Roper  
Sumitomo  
Sundstrand  
Sunflo  
Teel  
Towler  
Trunninger  
Tuthill  
Tyrone  
Uchida  
Union  
Vickers  
Viking  
Voith  
Volvo  
Webster  
Wepuko  
Yuken

## HYDRAULIC VALVES FLOW CONTROL/ PRESSURE/CONTROL/ DIRECTIONAL

Atos  
Barksdale  
Bendix  
Bosch  
Cincinnati  
Continental  
Daikin

Delta  
Denison  
Disa-matic  
Double A  
Dynaguide  
Dynex/Rivett  
Fluid Controls  
General Precision  
Gresen  
HPM  
Hawe  
Heald  
Hunt  
Hydromatik  
Hydro-Technik  
Integral Hydraulik  
John Barnes  
Jordan  
Logan  
Marotta  
Nachi  
North American  
Oilgear  
Olmsted  
Parker  
Racine  
Raymond  
Republic  
Rexroth  
Romheld  
SR  
Skinner  
Sun  
Teledyne  
Towler  
Vickers  
Wandfluh  
waterman  
Yuken

## HYDROSTATIC DRIVES

Atlas  
Fauver  
Kubick  
Melvin  
Sundstrand  
Vickers

## FEED PANELS

Ex-Cell-O  
Heald  
Vickers

Call us for a quote!  
800.325.4774



## PSI REPAIR SERVICES, INC.

©2020 PSI Repair Services, Inc., is a subsidiary of Phillips Service Industries, Inc.

RSI-13-107 REV 3/05/2020

United States  
11900 Mayfield  
Livonia, Michigan 48150-1710  
(800) 325-4774

Canada—Ship to:  
PSI Repair Services, Inc.  
C/O WWD - Cole International Inc.  
3950 Malden Road  
Windsor, Ont. CN N9C 2G4  
(800) 325-4774

Canada—Submit Payments to:  
PSI Repair Services, Inc.  
P.O. Box 21073  
Windsor, Ont. CN N9B 3T4

[psi-repair.com](http://psi-repair.com)



ISO 9001:2015  
CAGE CODE 5N884



### SPEED REDUCERS, GEARBOXES, VARIATORS AND CLUTCHES

Allen/Translift  
Bauer  
Boston Gear  
Candy  
Cleveland  
Cone Drive  
Cosmic  
David Brown  
Demag  
Dodge  
Dojen  
Drake  
Dresser  
Duff-Norton  
Falk  
Farrel  
Ferguson  
Flender  
Foote-Jones  
Force Controls  
GMF  
Hamilton  
Hansen

Hub City  
Ingersoll Rand  
Linkbelt  
Marle  
Mechanical/Handling  
Mico  
Midwest Brake  
Morse  
Nuttall  
Philadelphia  
Pick-O-Matic  
Reliance  
Rexnord  
Sew-Eurodrive  
Shuttleworth  
SM-Cyclo  
Sommer  
Sterling  
Sterns  
Sumitomo  
Terrell  
Textron  
Ti-Gear  
US Electric  
Von Ruden  
Zero Max

### THICK STOCK PUMPS

### VACUUM PUMPS, DIFFUSION PUMPS AND BLOWERS

Warren/Alstrom  
Alcatel  
Beach-Russ  
Becker  
Bellows  
Boekel Hyvac  
Busch  
Ceilcote  
Cenco  
Cooper  
Dayton  
Dresser  
Duroflow  
Edwards  
Fuji  
Gardner Denver  
Gast  
Graham  
Hetzl  
Hoffman

Hyvac  
Impco  
Kinney  
Lamson  
Medo  
M&D Pneumatic  
Nash  
Orion  
Paxton  
Pfeiffer Balzers  
Piab  
Precision-Scientific  
Rader  
Roots  
Sargent Welch  
Siemens  
Sihi  
Smoot  
Spencer  
Stokes  
Sutorbilt  
Travaini  
Tuthill  
Ulvac  
Vacuum Barrier  
Varian  
Warren/Alstrom  
Werie-Rietschle  
Whitlock



### PNEUMATIC MOTORS

Haskel  
Horton  
SC  
Sprague  
Teledyne

### PNEUMATIC PUMPS

Graco  
Haskel  
Horton  
SC  
Teledyne Sprague  
Warren Rupp  
Wilden

Fischer  
Fisher  
GH Bettis  
Herion  
Humphrey  
Lincoln  
Numatics  
Parker  
Ross  
Schrader-Bellows  
Sinclair Collins

Call us for a quote!  
800.325.4774



### PSI REPAIR SERVICES, INC.

©2020 PSI Repair Services, Inc., is a subsidiary of Phillips Service Industries, Inc.

RSI-13-107 REV 3/05/2020

United States  
11900 Mayfield  
Livonia, Michigan 48150-1710  
(800) 325-4774

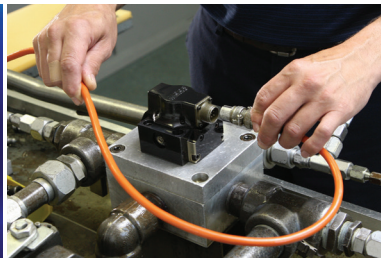
Canada—Ship to:  
PSI Repair Services, Inc.  
C/O WWD - Cole International Inc.  
3950 Malden Road  
Windsor, Ont. CN N9C 2G4  
(800) 325-4774

Canada—Submit Payments to:  
PSI Repair Services, Inc.  
P.O. Box 21073  
Windsor, Ont. CN N9B 3T4

psi-repair.com



ISO 9001:2015  
CAGE CODE 5N884



# Servo Valve Repair

## ABEX-CORPORATION

**Series:**  
410/415/425/450  
Abex-Denison  
SEO.3

## ATCHLEY

**Series:**  
206 218  
207 231  
208 241  
211 261  
215 275

## BULLARD

**Horizontal Series:**  
U-518433 .150 Gain  
U-518435 .250 Gain  
U-518436 .300 Gain  
U-518438 .100 Gain  
U-518439 .250 Gain  
**Vertical Series:**  
U-518434 .160 Gain  
U-518437 .250 Gain

## CINCINATTI

**Series:**  
177825  
189732  
192525  
302170

## DOWTY-MOOG

**Series:**  
300  
4551  
4552  
4553

## DYNAMIC

**Series:**  
5  
10  
12  
15  
16-5  
45

## HONEYWELL

**Series:**  
V7037  
V7038  
V7041  
V7058  
V7059

## HUNKAR

**Model:**  
86031  
86186  
86200  
86222  
86225  
86288

## KAWASAKI

**Model:**  
4Q1631 (S)  
4Q1730 (L)  
4Q1731 (L)  
4Q1733 (L)

## MOOG

**Series:**  
22 76 D064  
31 77 D079  
32 78 D631  
34 79 D641  
35 755 D642  
60 760 D643  
62 770 D644  
63 A076 D645  
72 D061 E076  
73 D062 E077

## OILGEAR

**Model:**  
L500654  
L502521  
L503044A  
L703518  
L709253  
L709435  
L714339-100

## OLOFSSON TOOL COMP BARS

30-138 with Dials/Pointers  
30-139

## PEGASUS

**Series:**  
120 140 180  
121 141 1160G  
122 142 1280  
130 160 1282  
131 161 1640  
132 162

## RAVA

**Model:**  
61SV01  
61SV02  
61SV04  
61SV08  
61SV15  
61SV30

## SLI INDUSTRIES

**Series:**  
PCS  
V105  
V702  
V710

## TOKYO PRECISION

**Series:**  
401F  
403F

## UNIMATION

**Model:**  
181-127A1R  
R127A1

## VICKERS

**Series:**  
CGE-02  
CGE-06  
CGE-10  
SA4  
SC4  
SF4  
SM4

## WERTH ENGINEERING

Flex Bar Assemblies

**Call us for a quote!**  
**800.325.4774**



## PSI REPAIR SERVICES, INC.

©2020 PSI Repair Services, Inc., is a subsidiary of Phillips Service Industries, Inc.

RSI-13-107 REV 3/05/2020

**United States**  
11900 Mayfield  
Livonia, Michigan 48150-1710  
(800) 325-4774

**Canada—Ship to:**  
PSI Repair Services, Inc.  
C/O WWD - Cole International Inc.  
3950 Malden Road  
Windsor, Ont. CN N9C 2G4  
(800) 325-4774

**Canada—Submit Payments to:**  
PSI Repair Services, Inc.  
P.O. Box 21073  
Windsor, Ont. CN N9B 3T4

[psi-repair.com](http://psi-repair.com)



ISO 9001:2015  
CAGE CODE 5N884



## MACHINE SLIDES

Gilman  
Okuma  
Olofsson  
Setco

## MACHINE TOOLS

Acroloc  
Amada  
American Eagle  
American GFM  
American Lathe  
American Phauter  
American Tool  
Behrens  
Bendix  
Boston Digital  
Bridgeport  
Brown & Sharpe  
Bryant  
Bullard  
Burgmaster  
Cargill  
Charmilles  
Cincinnati Gilbert  
Cincinnati Milacron  
Cone Blanchard  
Cross  
Cross Huller  
Daewoo  
DeHoff  
Detroit Broach  
DeVlieg  
Di Acro  
Doosan  
Elox  
Ex-Cell-O  
Excellon  
F. Joseph Lamb  
Fadal  
Fellows  
GA Gray  
Gardner Denver  
Giddings & Lewis  
Gleason  
HR Kreuger  
Hardinge  
Heald  
Heller  
Hillyer  
Hitachi-Seiki

Huffman  
Hurco  
Ingersoll  
Jones & Lamson  
Kasper  
Kearney & Trecker  
Kingsbury  
Lamb  
Landis  
LaSalle  
LeBlond Makino  
Leybold-Heraeus  
Lodge & Shipley  
Lucas  
MAG  
Makino  
Masco  
Master Machine  
Mazak  
Mitsubishi  
Monarch  
Moog  
Mori-Seiki  
Motch  
New Britain  
Newcor  
NSK  
Oerlikon  
Okuma  
Olofsson  
Onsrud  
Pneumo Precision  
Place  
Pratt & Whitney  
R&B Machine  
Rambaudi  
Saginaw Machine  
Sciaky  
Sheffield  
SMT Pullmax  
Springfield  
Stiles Machine  
Strippit  
Sundstrand  
Toshiba  
Toyoda  
Tree Machine  
Triway Machine  
Tru-Drill  
Trumpf America  
Universal Instrument  
Warner & Swasey  
Wasino

WA Whitney  
Werth  
White Consolidated  
Wiedemann  
Wotan  
**MANUFACTURERS**

20th Century  
Alois Kuhn  
American Ballscrew  
Barnes  
Beaver Aerospace and  
Defense, Inc.  
Cosmo  
Emcor  
Gamfior  
Ho-Fong  
IBL  
Modern American  
NSK  
Nachi  
PGM  
PSI  
Rockford  
SKF  
Saginaw  
Sargent  
Shuton  
Snyder  
Star  
Steinmeyer  
THK  
Thompson Saginaw  
Thread-Craft  
Torrington  
Tsubaki  
Warner Electric  
Weidon

## ROBOTS

ASEA  
Cincinnati  
DeVilbiss  
Fared  
GMF  
Graco  
Hitachi  
Hobart  
Kawasaki  
Motoman  
Nordson  
Prab  
Unimation

Did you know that  
we also manufacture  
NEW ball screws?

Call us for a quote!  
800.325.4774



## PSI REPAIR SERVICES, INC.

©2020 PSI Repair Services, Inc., is a subsidiary of Phillips Service Industries, Inc.

RSI-13-107 REV 3/05/2020

United States  
11900 Mayfield  
Livonia, Michigan 48150-1710  
(800) 325-4774

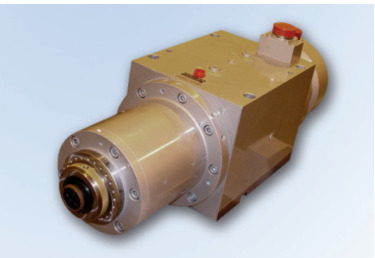
Canada—Ship to:  
PSI Repair Services, Inc.  
C/O WWD - Cole International Inc.  
3950 Malden Road  
Windsor, Ont. CN N9C 2G4  
(800) 325-4774

Canada—Submit Payments to:  
PSI Repair Services, Inc.  
P.O. Box 21073  
Windsor, Ont. CN N9B 3T4

[psi-repair.com](http://psi-repair.com)



ISO 9001:2015  
CAGE CODE 5N884



## Spindle Repair

Advance Control  
 Boneham  
 Boyar-Schultz  
 Bridgeport  
 Brown & Sharpe  
 Bryant  
 Bullard  
 Cincinnati  
 Cincinnati Twin Grip  
 Colonial Tool  
 Cross  
 Dumore  
 Ekstrom-Carlson  
 EWL  
 Ex-Cell-O  
 Excellon  
 Federal Mogul  
 GMN  
 Gamet  
 Gamfior  
 Gatco  
 Gilman  
 Hammelmann

Heald  
 Heald Red Head  
 Hessop  
 Huffman  
 Ibag Zurich  
 Ingersoll-Rand  
 KO Lee  
 Kingsbury  
 Kitagawa  
 LeBlond-Makino  
 LOH  
 Mazak  
 Milwaukee  
 Moore  
 Nagel  
 NSK  
 Nomoco  
 Okomoto  
 Okuma  
 Olofsson  
 Onsrud  
 Parker Majestic  
 Pope

Precise  
 Ransburg-Gema  
 Reid  
 SIP  
 SKF  
 Sames  
 Setco  
 Spin-O-Matic  
 Taft-Pierce  
 Toshiba  
 Toyoda  
 UVA  
 Voumard  
 Westwind  
 Whitnon  
 XLO  
 Zagan

**Call us for a quote!**  
**800.325.4774**

- Precision balancing and computerized vibration analysis are used in final testing.
- Testing at speeds to 150,000 RPM.
- Certification.
- Rapid turnaround.



### PSI REPAIR SERVICES, INC.

©2020 PSI Repair Services, Inc., is a subsidiary of Phillips Service Industries, Inc.

RSI-13-107 REV 3/05/2020

**United States**  
 11900 Mayfield  
 Livonia, Michigan 48150-1710  
 (800) 325-4774

**Canada—Ship to:**  
 PSI Repair Services, Inc.  
 C/O WWD - Cole International Inc.  
 3950 Malden Road  
 Windsor, Ont. CN N9C 2G4  
 (800) 325-4774

**Canada—Submit Payments to:**  
 PSI Repair Services, Inc.  
 P.O. Box 21073  
 Windsor, Ont. CN N9B 3T4

[psi-repair.com](http://psi-repair.com)



ISO 9001:2015  
 CAGE CODE 5N884





## DISTRIBUTED CONTROL SYSTEMS

### Bailey Net 90/INFI 90

CIU Components  
OIU/MCS Components  
OIS 20 Components  
PCU Modules

### Fisher Provox 6500 Series

Including HP1000  
Computers and  
HP7906 Disk Drives

### Foxboro Spectrum

AIM/CCM/FIO/UCM/  
UFM/UIO Components

Foxboro

I/A

Foxnet

Communication  
Ports and Control

Interspec

Communication  
Gateway and  
Components

Microspec Modules

Spec 200 Modules

Videospec II & III Modules

### Honeywell

TDC 2000

TDC 3000

## ELECTRONIC

### ABB Stromberg

ULMA 2010

ULMA 2020 Hole

Detectors

### Athena

Temperature Controllers

### Bailey

820 Series

7000 Series

Batch Controllers

Loop Controllers

Sequence Controllers

### Barber Colman

Maco III/Maco 8000

Components

Temperature Controllers

### Bristol Babcock

Loop Controllers

### Coen

Signal Processor

UV/IR Detector

### Control Gaging

Gage Controllers

### DME

Temperature Controllers

### Daytronic

Signal Conditioning  
Modules

### Devron/Measurex

Calcoil Power Modules

### Digital Techniques

Gage Controllers

### ETS Equipment

Temperature Controllers

### Eurotherm

Temperature Controllers

### Fischer & Porter

Loop Controllers

### Fisher Controls

AC<sup>2</sup> Controllers

### Foxboro

Display Stations

Loop Controllers

### Gammaflux

Temperature Controllers

### Gemco

Programmable Limit

Switch

### General Electric

Temperature Controllers

### Hardy Instrument

Weight Converters

### Honeywell

Loop Controllers

### LFE

Temperature Controllers

### Leeds & Northrup

Loop Controllers

### Love Controls

Temperature Controllers

### MKS

Loop Controllers

### Marposs

Gage Controllers

Gages

### Micro-Poise

Wax Marker Units

### Moore Instruments

Alarm Modules

### Moore Products

Computer Interface

Loop Controllers

### Nordson

Temperature Controllers

### Omega

Temperature Controllers

### Panalarm

Alarm Modules

### Partlow

Temperature Controllers

### Powers Process Control

Controllers

### RKC

Temperature Controllers

### Rochester Instruments

Alarm Modules

### Ronan

Alarm Modules

### Syron

Double Blank

Analyzer

### Taylor

Loop Controllers

"MOD 30" Components

### Transmation

Temperature Controllers

### United Electric

Temperature Controllers

Temperature Controllers

### Watlow

Temperature Controllers

### Yokagawa

Halogen Leak Detectors

## Process Control Repair

## POWER SUPPLIES

All Types/Voltage Ranges

## WEIGHING EQUIPMENT

### Ishida

Checkweighers

RLC

S

Z

Call us for a quote!

800.325.4774



## PSI REPAIR SERVICES, INC.

©2020 PSI Repair Services, Inc., is a subsidiary of Phillips Service Industries, Inc.

RSI-13-107 REV 3/05/2020

### United States

11900 Mayfield  
Livonia, Michigan 48150-1710  
(800) 325-4774

### Canada—Ship to:

PSI Repair Services, Inc.  
C/O WWD - Cole International Inc.  
3950 Malden Road  
Windsor, Ont. CN N9C 2G4  
(800) 325-4774

### Canada—Submit Payments to:

PSI Repair Services, Inc.  
P.O. Box 21073  
Windsor, Ont. CN N9B 3T4

[psi-repair.com](http://psi-repair.com)



ISO 9001:2015  
CAGE CODE 5N884



## CHART RECORDERS

Astro Med  
Bristol Babcock  
Chessell  
Esterline Angus  
Fischer & Porter  
Fisher Controls  
Foxboro  
Gould  
Recorders/Amplifiers  
Honeywell  
Leeds & Northrup  
Taylor

## DISPLAYS

Air Gauge  
Column Gauge Displays  
Dearborn Gauge  
Column Gauge Displays  
Freeland  
Column Gauge Displays

## PNEUMATIC CONTROLLERS

Fisher Controls  
Loop Controllers  
Foxboro  
Loop Controllers  
Leybold-Heraeus  
Vacuum Controllers  
Moore Products  
Loop Controllers

## TRANSMITTERS/ TRANSDUCERS

Brooks Instruments  
Mag Flow Transmitters  
Dahl  
IP/PI Transducers  
Drexel Brook  
Level Transmitters  
Temperature Transmitters  
Fairchild  
Boosters  
Regulators  
Relays  
Fischer & Porter  
Mag Flow Transmitters  
Fisher Controls  
Absolute/Gauge/  
DP/Position/  
Temperature Transmitters  
Foxboro  
Absolute/Gauge/  
DP/Mag Flow/  
Temperature/Level  
Transmitters  
Moore Industries  
Alarm Modules  
Signal Conditioners  
Temperature Transmitters  
Robertshaw Controls  
Level Transmitters

Transducers  
**Rochester Instrument Systems**  
Alarm Modules  
Signal Conditioners  
Signal Transmitters  
**Ronan**  
Temperature Transmitters  
**Rosemount**  
Absolute/Gauge/  
DP/Temperature/  
Level/Mag Flow  
Transmitters  
**Setra**  
Transducers  
**Taylor**  
Absolute/Gauge/ DP/  
Level/ Temperature/  
Flow Transmitters  
**Temposonic**  
Level Transmitters  
**Valmet**  
Consistency Transmitters

Call us for a quote!  
800.325.4774



## PSI REPAIR SERVICES, INC.

©2020 PSI Repair Services, Inc., is a subsidiary of Phillips Service Industries, Inc.

RSI-13-107 REV 3/05/2020

United States  
11900 Mayfield  
Livonia, Michigan 48150-1710  
(800) 325-4774

Canada—Ship to:  
PSI Repair Services, Inc.  
C/O WWD - Cole International Inc.  
3950 Malden Road  
Windsor, Ont. CN N9C 2G4  
(800) 325-4774

Canada—Submit Payments to:  
PSI Repair Services, Inc.  
P.O. Box 21073  
Windsor, Ont. CN N9B 3T4

[psi-repair.com](http://psi-repair.com)



ISO 9001:2015  
CAGE CODE 5N884