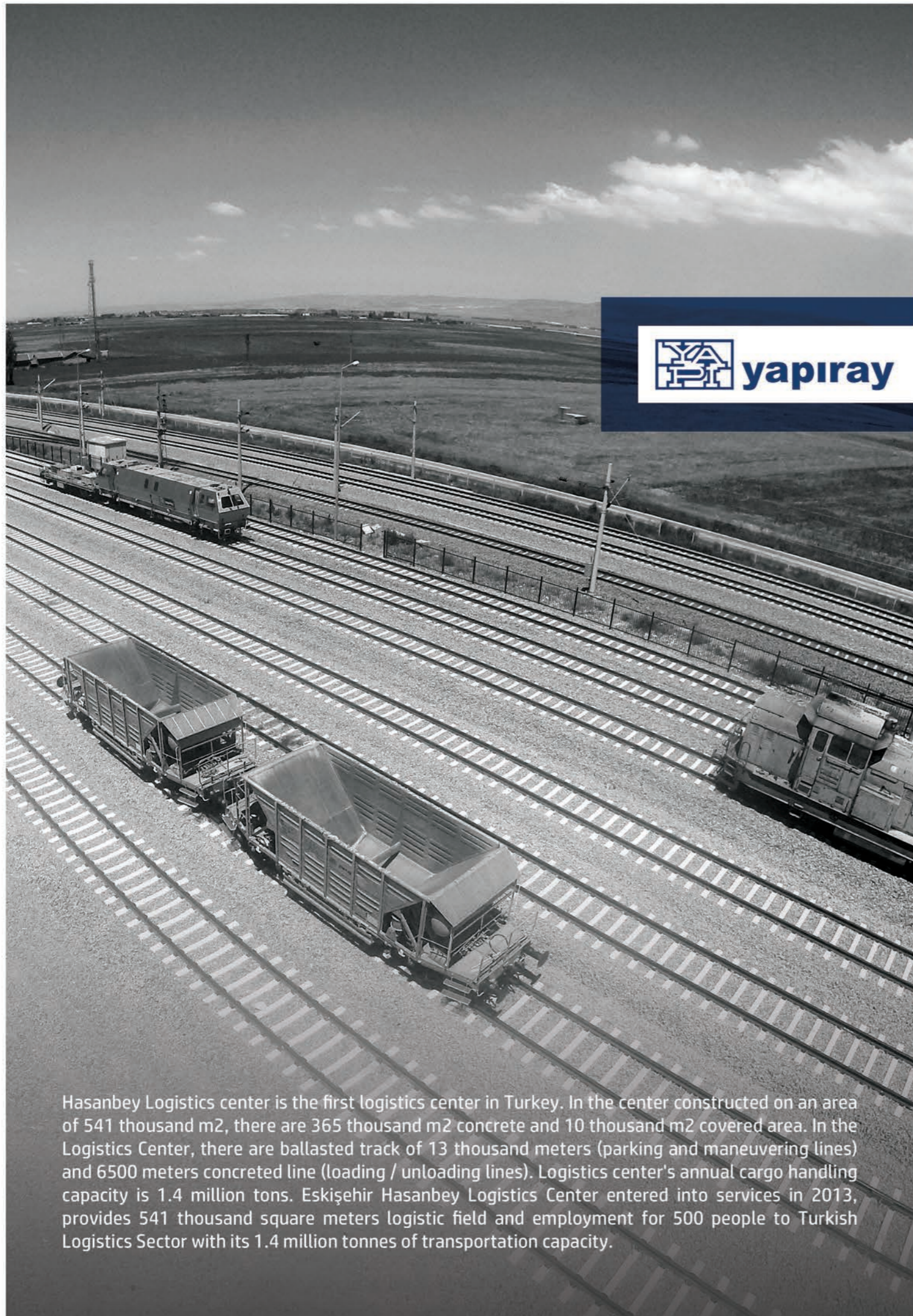




yapiray

Hasanbey Logistic Center



Hasanbey Logistics center is the first logistics center in Turkey. In the center constructed on an area of 541 thousand m², there are 365 thousand m² concrete and 10 thousand m² covered area. In the Logistics Center, there are ballasted track of 13 thousand meters (parking and maneuvering lines) and 6500 meters concreted line (loading / unloading lines). Logistics center's annual cargo handling capacity is 1.4 million tons. Eskişehir Hasanbey Logistics Center entered into services in 2013, provides 541 thousand square meters logistic field and employment for 500 people to Turkish Logistics Sector with its 1.4 million tonnes of transportation capacity.



HASANBEY LOGISTICS CENTER

Job start-end dates: 21/12.2011 - 19/12/2013

Line Length: 13.2 Km ballast, 5.8 km of concrete hard

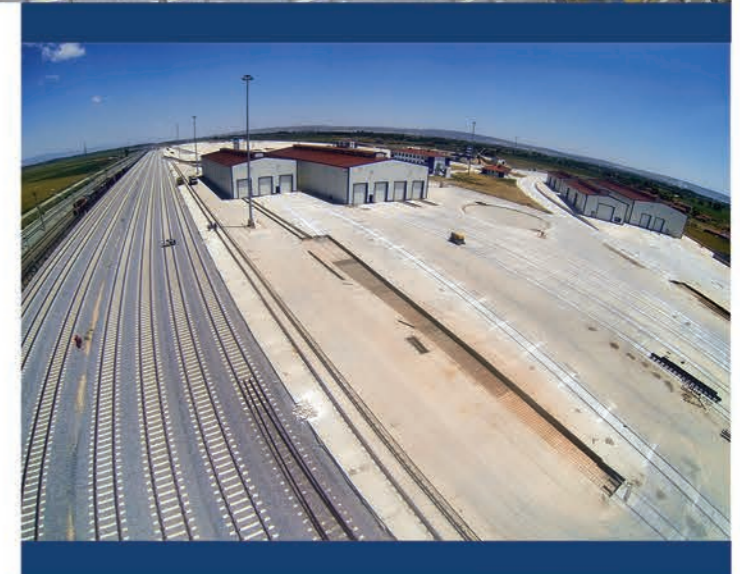
Rail type : UIC60, S49

Switch type and quantity : 59 pcs 1/9 R = 300 Simple Switches, 1 Piece Cross Switch Team

Sleeper and Connection type: B70, W14

Switch amount etc.: 36 pcs Ballast, 1 unit Cross Switch,

23 pcs Concrete Fixed Switches



1. All information given as part of this brochure cannot be used, copied or published without the knowledge and approval of YAPIRAY.
2. YAPIRAY reserves the right to change the information within the scope of this brochure.
3. RAYTON, RAYKAS and PANELRAY are registered brands of YAPIRAY.



Main Branch:

Kısıklı Mah. Alemdağ Cad. Masaldan İş Merkezi
No:60 E Blok No:5 Üsküdar/İSTANBUL
Phone : +90 216 521 30 00
Fax : +90 216 505 54 21
: +90 216 505 54 22

Afyon Rayton Factory:

Zafer Mah. Ahmet Özyurt Cad. No:160
İhsaniye/AFYONKARAHİSA
Phone : +90 272 271 50 18
Fax : +90 272 271 51 34

info@yapiray.com.tr
ik@yapiray.com.tr
rayton@yapiray.com.tr



www.yapiray.com.tr