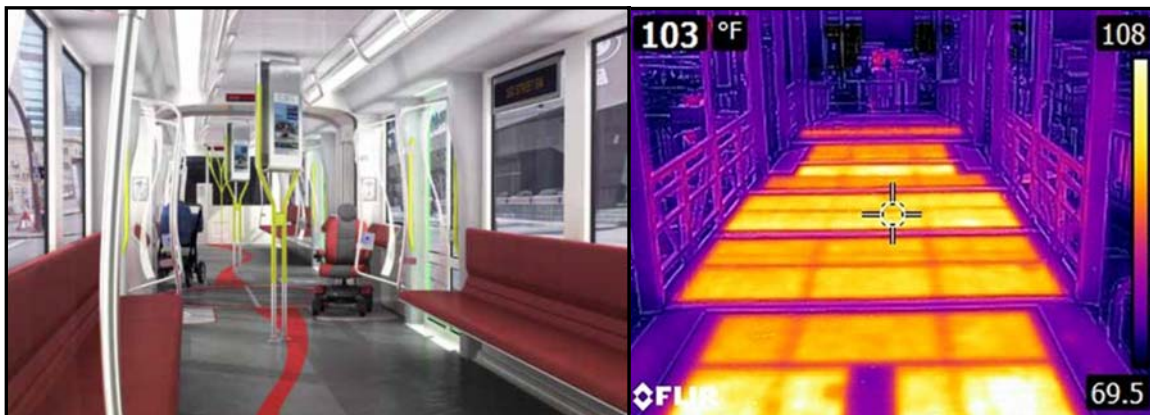
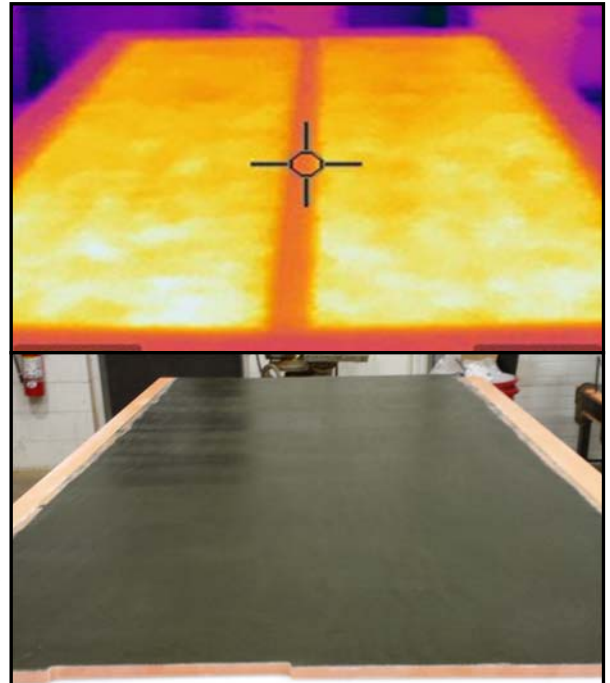




# HEATED FLOOR SYSTEM

Milwaukee Composites Inc. (MCI) is a leading global supplier of advanced phenolic composite panels to the transit industry. With over 19 years of proven experience supplying light weight, maintenance free non-heated floors, MCI now supplies a heated floor solution that delivers the same benefits. MCI has developed a heater element that can be molded into the top skin of our standard floor panel to provide a robust system that can eliminate the sidewall heaters. MCI's heated floor system works in combination with a dynamic temperature control unit (DTCU) to continuously regulate floor temperatures to ensure passenger comfort and safety. MCI's heated floors contain temperature sensors that provide feedback to the DTCU which apply voltage to the floor panels as required. MCI's "Distributed Power" approach allows for independent temperature control of each panel, or zone of panels, to precisely control the temperature in that region regardless of changes in load or conditions for optimal comfort. The floor panels are designed for optimal power draw to overcome thermal losses which allows for a dynamic response to conditions such as doors opening or passenger density without over compensating the adjacent area.

MCI's heated floor panels work in conjunction with an "Intelligent" Control and Protection System which consists of two elements, the Main Disconnect and the distribution of DTCU's. There is an option for each heated panel to have an Independent Temperature Control with a Solid State Output and Over Current Protection. Distributing the temperature control logic and power outputs simplifies installation wiring by not requiring power and control signals to be returned back to the main control.



Heated Floor Installation in Sacramento, CA

**Milwaukee Composites Incorporated**

6055 S. Pennsylvania Avenue; Cudahy, WI 53110 - USA

Phone: +1 414 571 2788 Fax: +1 414 571 2799

[sales@milwaukeecomposites.com](mailto:sales@milwaukeecomposites.com)



# PROVIDING THE MOST ADVANCED PHENOLIC COMPOSITE PANELS WORLDWIDE ....



Kawasaki Heavy Industries



Siemens Industry Mobility



Transit Bus Floors



China Northern

## OEM Carbuilders

- China Southern (CSR)
- China Northern (CNR)
- Bombardier Transportation
- Siemens Industry
- Alstom Transport
- Kawasaki Heavy Industries
- Nippon Sharyo
- Kinkisharyo LLC
- Hyundai-Rotem
- BEML (Bangalore, India)
- CAF
- SATCO (Hong Kong)
- Brookville Equipment Corp.
- Gillig Corporation (Bus mfg)
- New Flyer Industries (Bus mfg)

## Transit Authorities:

- NYCT (New York, NY)
- LUL (London Underground)
- Eversholt Rail (UK)
- BART (San Francisco, CA)
- SEPTA (Philadelphia, PA)
- MTR (Hong Kong)
- METRA (Chicago, IL)
- MBTA (Boston, MA)
- TRIMET (Portland, OR)
- NJT (New Jersey, NJ)
- WMATA (Washington, DC)
- MUNI Bus (San Francisco, CA)
- AMTRAK



Kinkisharyo LLC



Nippon Sharyo



Alstom Transport



Bombardier Transportation