



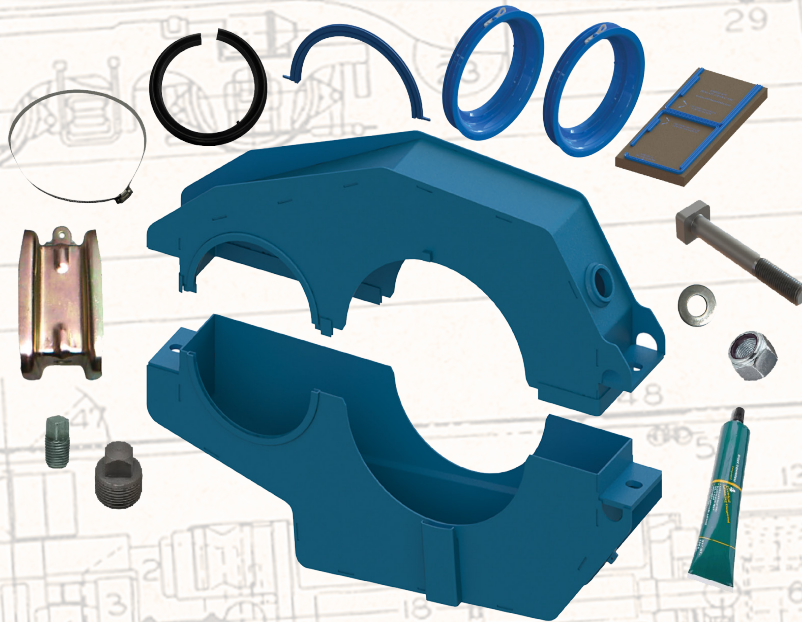
205 Clark Road • Duryea, PA 18642  
 Phone: 570-883-7005 • Fax: 570-883-7006  
 Sales@ePowerRail.com  
 www.ePowerRail.com



## Gearcase Complete Kits

**D77/D78/D87 GEARCASE SETS NOW IN STOCK!**

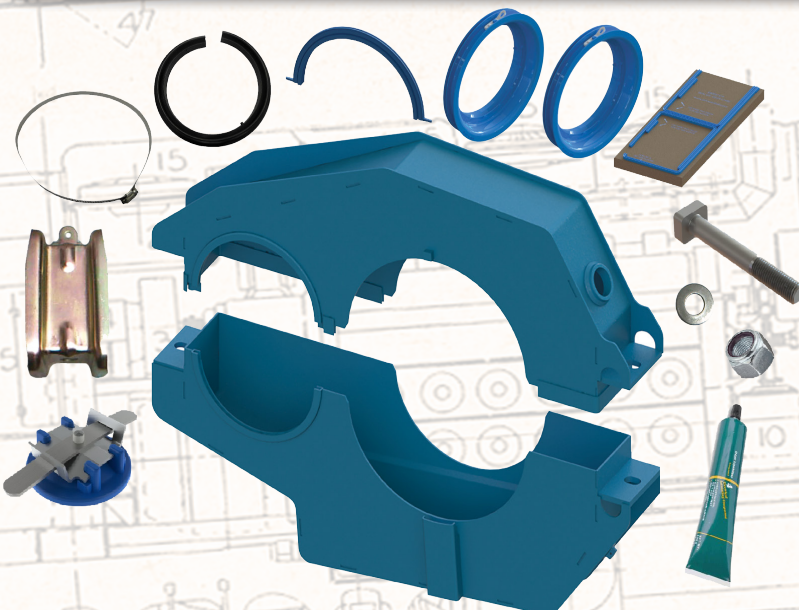
**P/N 16185978 - Gearcase Set Oil Filled COMPLETE**



Part #	Description	Qty
E40021647PLOK	Gearcase Oil Filled Lower	1
E40024857PLOK	Gearcase Oil Filled Upper	1
<b>PRD16184978TOIL / T-Bolt Oil Kit</b>		
E103410	Cotter Pin	2
E103880	Pipe Plug	1
E103881	Pipe Plug	1
E108659	Cotter Pin	2
E40012790	Seal Pinion Rubber	2
E40061419PRD	Seal Assembly Kit Oil Gearcase	1
E8126036	Safety Strap Gearcase	2
E8322027	T Bolt Safety Strap	2
E8366747	Compound Sealant Clear	1
E8407505	Clamp Wheelside Gutter	2
E8407506	Seal Dust Guard Commutator End	1
E9535375PRD	Ring Seal Outer Gearcase	1
E9535376PRD	Ring Seal Inner Gearcase	1
PRD100CNNEG5Z	Locknut Nylock	2
PRD16184773	Washer Flat	2

**COMPLETE GEARCASE AND SEAL KIT \*OIL FILLED**

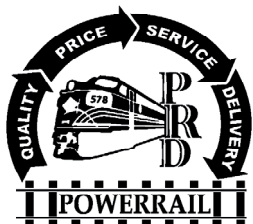
**P/N 16185977 - Gearcase Set Grease Filled COMPLETE**



Part #	Description	Qty
E9540306PLOK	Gearcase Grease Filled Lower	1
E9540598PLOK	Gearcase Grease Filled Upper	1
<b>PRD16184978TGRS / T-Bolt Grease Kit</b>		
E103410	Cotter Pin	2
E108659	Cotter Pin	2
E40012790	Seal Pinion Rubber	2
E40017436PRD	Cap Filler Gearcase	1
E40061419PRD	Seal Assembly Kit Oil Gearcase	1
E8126036	Safety Strap Gearcase	2
E8322027	T Bolt Safety Strap	2
E8366747	Compound Sealant Clear	1
E8407505	Clamp Wheelside Gutter	2
E8407506	Seal Dust Guard Commutator End	1
E9535375PRD	Ring Seal Outer Gearcase	1
E9535376PRD	Ring Seal Inner Gearcase	1
PRD100CNNEG5Z	Locknut Nylock	2
PRD16184773	Washer Flat	2

**COMPLETE GEARCASE AND SEAL KIT \*GREASE FILLED**

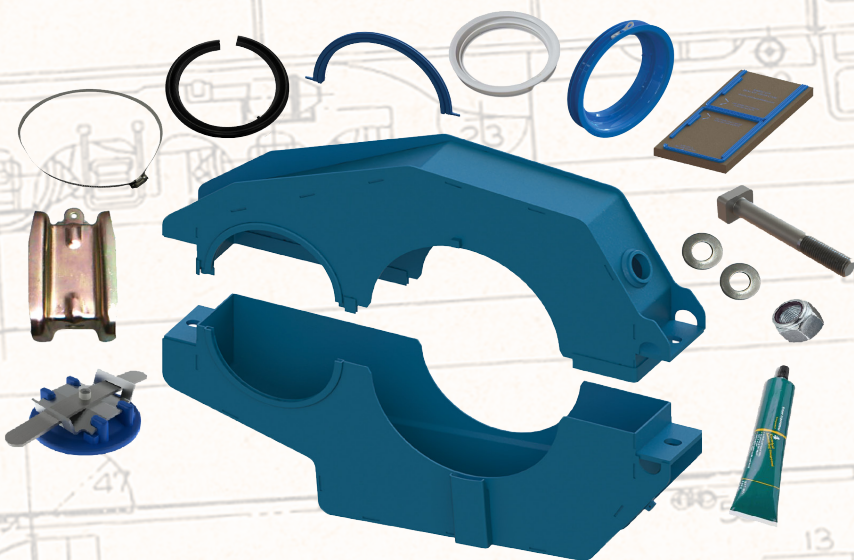




# www.ePowerRail.com Gearcase Complete Kits



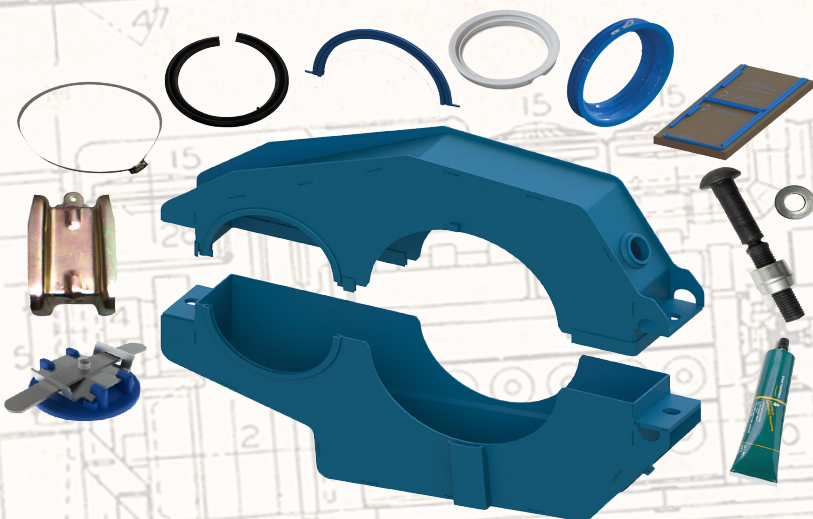
## P/N 16186701T - Gearcase Set Oil Filled T-Bolt **COMPLETE**



Part #	Description	Qty
E40017364PLOK	Gearcase Oil Filled Lower - D87BTR	1
E40017363PLOK	Gearcase Oil Filled Upper - D87BTR	1
<b>PRD16184978TBTR / T-Bolt Oil Kit</b>		
E103410	Cotter Pin	1
E108659	Cotter Pin	2
E40006689	Seal Inner Ring	1
E40012790	Seal Pinion Rubber	2
E40017436PRD	Cap Gearcase Filler	2
E40061419PRD	Seal Assembly Kit Oil Gearcase	1
E8126036	Safety Strap Gearcase	2
E8322027	T Bolt Safety Strap	2
E8366747	Compound Sealant Clear	1
E8407505	Clamp Wheelside Gutter	2
E8407506PRD	Seal Dust Guard Commutator End	1
E9535375PRD	Ring Seal Outer Gearcase	1
E8032750	Locknut Nylock	2
E8322026	Washer Flat	2
PRD16184773	Washer Flat	2

## **COMPLETE GEARCASE AND SEAL KIT \*OIL FILLED**

## P/N 16186701 - Gearcase Set Oil Filled Huck Bolt **COMPLETE**



Part #	Description	Qty
E40017364PLOK	Gearcase Grease Filled Lower	1
E40017363PLOK	Gearcase Grease Filled Upper	1
<b>PRD16186701 / Huck Bolt Oil Kit</b>		
E103410	Pin Cotter	1
E108659	Pin Cotter	2
E40006689	Seal Inner Ring	1
E40012790	Seal Pinion Rubber	2
E40017436PRD	Cap Gearcase Filler	2
E40061419PRD	Seal Assembly Kit Oil Gearcase	1
E8126036	Safety Strap Gear Case	2
E8423699	Rivet Huck	2
E8366747	Compound Sealant Clear	1
E8407505	Clamp Wheelside Gutter	2
E8407506PRD	Seal Dust Guard Commutator End	1
E9535375PRD	Ring Seal Outer Gearcase	1
E40034493	Huck Collar	2
E8322026	Washer Flat	2

## **COMPLETE GEARCASE AND SEAL KIT \*OIL FILLED**



# Gearcase Installation Kits



**PRD16184978HUCK / Huck Bolt Oil Kit**

Part #	Description	Qty
E103880	Pipe Plug	1
E103881	Pipe Plug	1
E40012790	Seal Pinion Rubber	2
E40034493	Huck Collar	2
E40061419PRD	Seal Assembly Kit Oil Gearcase	1
E8126036	Safety Strap Gearcase	2
E8366747	Compound Sealant Clear	1
E8407505	Clamp Wheelside Gutter	2
E8407506	Seal Dust Guard Commutator End	1
E842369	Rivet Huck	2
E9535375PRD	Ring Seal Outer Gearcase	1
E9535376PRD	Ring Seal Inner Gearcase	1
PRD16184773	Washer Flat	2

Part #	Description	Qty
E103410	Cotter Pin	2
E103880	Pipe Plug	1
E103881	Pipe Plug	1
E108659	Cotter Pin	2
E40012790	Seal Pinion Rubber	2
E40061419PRD	Seal Assembly Kit Oil Gearcase	1
E8126036	Safety Strap Gearcase	2
E8322027	T Bolt Safety Strap	2
E8366747	Compound Sealant Clear	1
E8407505	Clamp Wheelside Gutter	2
E8407506	Seal Dust Guard Commutator End	1
E9535375PRD	Ring Seal Outer Gearcase	1
E9535376PRD	Ring Seal Inner Gearcase	1
PRD100CNNEG5Z	Locknut Nylock	2
PRD16184773	Washer Flat	2



**PRD16184978TOIL / T-Bolt Oil Kit**



**PRD16184978TGRS / T-Bolt Grease Kit**

Part #	Description	Qty
E103410	Cotter Pin	2
E108659	Cotter Pin	2
E40012790	Seal Pinion Rubber	2
E40017436PRD	Cap Filler Gear Case	1
E40061419PRD	Seal Assembly Kit Oil Gearcase	1
E8126036	Safety Strap Gearcase	2
E8322027	T Bolt Safety Strap	2
E8366747	Compound Sealant Clear	1
E8407505	Clamp Wheelside Gutter	2
E8407506	Seal Dust Guard Commutator End	1
E9535375PRD	Ring Seal Outer Gearcase	1
E9535376PRD	Ring Seal Inner Gearcase	1
PRD100CNNEG5Z	Locknut Nylock	2
PRD16184773	Washer Flat	2





# Gearcase Installation Kits



Part #	Description	Qty
E103410	Cotter Pin	2
E108659	Cotter Pin	2
E40017436PRD	Cap Filler Gearcase	1
E8126036	Safety Strap Gearcase	2
E8257840	Seal Kit Felt	2
E8322027	T Bolt Safety Strap	2
E8366747	Compound Sealant Clear	1
E8407505	Clamp Wheelside Gutter	1
E8407506PRD	Seal Dust Guard Commutator End	1
E8032750	Locknut Nylock	2
E8322026	Washer Flat	2
E8310818	Seal Rope Gearcase	1



## PRD16184978TFELT / T-Bolt Grease Felt Seal Kit



## PRD16184978TBTR / T-Bolt D87 Kit

Part #	Description	Qty
E103410	Pin Cotter	1
E108659	Pin Cotter	2
E40006689	Seal Inner Ring	1
E40012790	Seal Pinion Rubber	2
E40017436PRD	Cap Gear Case Filler	2
E40061419PRD	Seal Assembly Kit Oil Gearcase	1
E8126036	Safety Strap Gear Case	2
E8322027	T Bolt for Safety Strap	2
E8366747	Compound Sealant Clear	1
E8407505	Clamp Wheelside Gutter	2
E8407506PRD	Seal Dust Guard Commutator End	1
E9535375PRD	Ring Seal Outer Gearcase	1
E8032750	Locknut Nylock	2
E8322026	Washer Flat	2

Part #	Description	Qty
E103410	Pin Cotter	1
E108659	Pin Cotter	2
E40006689	Seal Inner Ring	1
E40012790	Seal Pinion Rubber	2
E40017436PRD	Cap Gear Case Filler	2
E40061419PRD	Seal Assembly Kit Oil Gearcase	1
E8126036	Safety Strap Gear Case	2
E8423699	Rivet Huck	2
E8366747	Compound Sealant Clear	1
E8407505	Clamp Wheelside Gutter	2
E8407506PRD	Seal Dust Guard Commutator End	1
E9535375PRD	Ring Seal Outer Gearcase	1
E40034493	Huck Collar	2
E8322026	Washer Flat	2



## PRD16184978HBTR / Huck Bolt D87 Kit



# EMD GEARCASES



PRD#	REF. #	DESCRIPTION	TM	SEALS	RATIO	LOCOMOTIVES	LUBE
E9540306PLOCK	9540306	LOWER GEARCASE	D77/87	PLASTIC	62:15	DD, F, F7A, F7B, FP, GP, SD, SDP, SW, NR11	GREASE
<b>E9540306COMBO</b>	<b>9540306</b>	<b>LOWER GEARCASE</b>	<b>D77/87</b>	<b>PLASTIC</b>	<b>62:15</b>	<b>DD, F, F7A, F7B, FP, GP, SD, SDP, SW, NR11</b>	<b>GREASE or OIL</b>
E9540307PLOCK	9540307	LOWER GEARCASE	D77/87	PLASTIC	62:15	DD, F, F7A, F7B, FP, GP, SD, SDP, SW, NR11	GREASE
<b>E9540307COMBO</b>	<b>9540307</b>	<b>LOWER GEARCASE</b>	<b>D77/87</b>	<b>PLASTIC</b>	<b>62:15</b>	<b>DD, F, F7A, F7B, FP, GP, SD, SDP, SW, NR11</b>	<b>GREASE or OIL</b>
E9540598PLOCK	9540598	UPPER GEARCASE	D77/87	PLASTIC	62:15	DD, F, F7A, F7B, FP, GP, SD, SDP, SW, NR11	GREASE
<b>E9540598COMBO</b>	<b>9540598</b>	<b>UPPER GEARCASE</b>	<b>D77/87</b>	<b>PLASTIC</b>	<b>62:15</b>	<b>DD, F, F7A, F7B, FP, GP, SD, SDP, SW, NR11</b>	<b>GREASE or OIL</b>
E40021647PLOCK	40021647	LOWER GEARCASE	D77/87	PLASTIC	62:15	DD, F, F7A, F7B, FP, GP, SD, SDP, SW, NR11	OIL
<b>E40021647COMBO</b>	<b>40021647</b>	<b>LOWER GEARCASE</b>	<b>D77/87</b>	<b>PLASTIC</b>	<b>62:15</b>	<b>DD, F, F7A, F7B, FP, GP, SD, SDP, SW, NR11</b>	<b>GREASE or OIL</b>
E40024857PLOCK	40024857	UPPER GEARCASE	D77/87	PLASTIC	62:15	DD, F, F7A, F7B, FP, GP, SD, SDP, SW, NR11	OIL
<b>E40024857COMBO</b>	<b>40024857</b>	<b>UPPER GEARCASE</b>	<b>D77/87</b>	<b>PLASTIC</b>	<b>62:15</b>	<b>DD, F, F7A, F7B, FP, GP, SD, SDP, SW, NR11</b>	<b>GREASE or OIL</b>
E8301948PLOCK	8301948	UPPER GEARCASE	D77/87	FELT	62:15	DD, F, F7A, F7B, FP, GP, SD, SDP, SW, NR11	GREASE
<b>E8301948COMBO</b>	<b>8301948</b>	<b>UPPER GEARCASE</b>	<b>D77/87</b>	<b>FELT</b>	<b>62:15</b>	<b>DD, F, F7A, F7B, FP, GP, SD, SDP, SW, NR11</b>	<b>GREASE or OIL</b>
E9315720PLOCK	9315720	LOWER GEARCASE	D77/87	FELT	62:15	DD, F, F7A, F7B, FP, GP, SD, SDP, SW, NR11	GREASE
<b>E9315720COMBO</b>	<b>9315720</b>	<b>LOWER GEARCASE</b>	<b>D77/87</b>	<b>FELT</b>	<b>62:15</b>	<b>DD, F, F7A, F7B, FP, GP, SD, SDP, SW, NR11</b>	<b>GREASE or OIL</b>
E9310002PLOCK	9310002	LOWER GEARCASE	D77/87	PLASTIC	62:15	DD, F, F7A, F7B, FP, GP, SD, SDP, SW, NR11	GREASE
<b>E9310002COMBO</b>	<b>9310002</b>	<b>LOWER GEARCASE</b>	<b>D77/87</b>	<b>PLASTIC</b>	<b>62:15</b>	<b>DD, F, F7A, F7B, FP, GP, SD, SDP, SW, NR11</b>	<b>GREASE or OIL</b>
E40038097PLOCK	40038097	LOWER GEARCASE	D70	PLASTIC	83:18	SD70, SD751, SD80MAC, SD90AC, SD90MAC	OIL
<b>E40038097COMBO</b>	<b>40038097</b>	<b>LOWER GEARCASE</b>	<b>D70</b>	<b>PLASTIC</b>	<b>83:18</b>	<b>SD70, SD751, SD80MAC, SD90AC, SD90MAC</b>	<b>GREASE or OIL</b>
E4003808PLOCK	40038098	UPPER GEARCASE	D70	PLASTIC	83:18	SD70, SD751, SD80MAC, SD90AC, SD90MAC	OIL
<b>E40038098COMBO</b>	<b>40038098</b>	<b>UPPER GEARCASE</b>	<b>D70</b>	<b>PLASTIC</b>	<b>83:18</b>	<b>SD70, SD751, SD80MAC, SD90AC, SD90MAC</b>	<b>GREASE or OIL</b>
E40046866PLOCK	40046866	LOWER GEARCASE	D90/100	PLASTIC	83:18	SD70, SD751, SD80MAC, SD90AC, SD90MAC	OIL
<b>E40046866COMBO</b>	<b>40046866</b>	<b>LOWER GEARCASE</b>	<b>D90/100</b>	<b>PLASTIC</b>	<b>83:18</b>	<b>SD70, SD751, SD80MAC, SD90AC, SD90MAC</b>	<b>GREASE or OIL</b>
E40046865PLOCK	40046865	UPPER GEARCASE	D90/100	PLASTIC	83:18	SD70, SD751, SD80MAC, SD90AC, SD90MAC	OIL
<b>E40046865COMBO</b>	<b>40046865</b>	<b>UPPER GEARCASE</b>	<b>D90/100</b>	<b>PLASTIC</b>	<b>83:18</b>	<b>SD70, SD751, SD80MAC, SD90AC, SD90MAC</b>	<b>GREASE or OIL</b>
E40017363PLOCK	40017363	UPPER GEARCASE	D87BTR	PLASTIC	70:17	GP60, SD60I	OIL
<b>E40017363COMBO</b>	<b>40017363</b>	<b>UPPER GEARCASE</b>	<b>D87BTR</b>	<b>PLASTIC</b>	<b>70:17</b>	<b>GP60, SD60I</b>	<b>GREASE or OIL</b>
E40017364PLOCK	40017364	LOWER GEARCASE	D87BTR	PLASTIC	70:17	GP60, SD60I	OIL
<b>E40017364COMBO</b>	<b>40017364</b>	<b>LOWER GEARCASE</b>	<b>D87BTR</b>	<b>PLASTIC</b>	<b>70:17</b>	<b>GP60, SD60I</b>	<b>GREASE or OIL</b>
E9540579PLOCK	9540579	UPPER GEARCASE	E MOTOR	PLASTIC	65:12	DD, F, FP, GP, DP, SW	GREASE
<b>E9540579COMBO</b>	<b>9540579</b>	<b>UPPER GEARCASE</b>	<b>E MOTOR</b>	<b>PLASTIC</b>	<b>65:12</b>	<b>DD, F, FP, GP, DP, SW</b>	<b>GREASE or OIL</b>

Also Offering **Original** Design Grease & Oil Gearcases - PowerLok

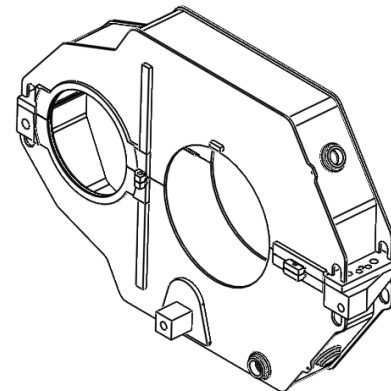
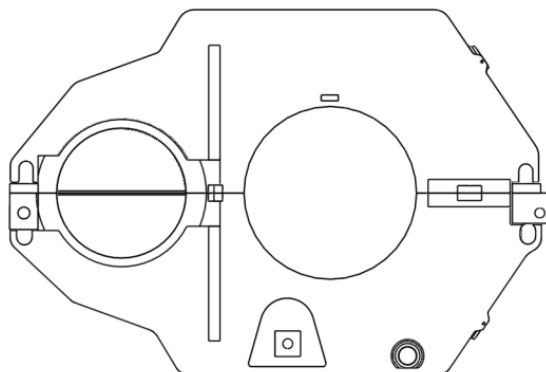
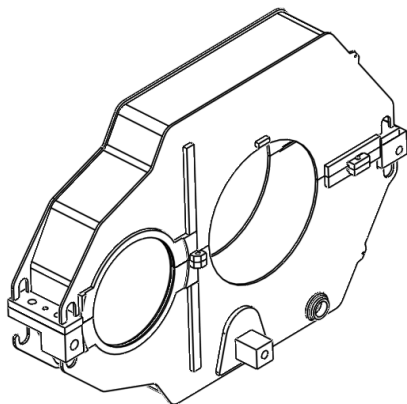
See Page 8 for Details!



# EMD GEARCASES (cont.)



E9541129PLOCK	9541129	LOWER GEARCASE	E MOTOR	PLASTIC	65:12	DD, F, FP, GP, DP, SW	GREASE
<b>E9541129COMBO</b>	<b>9541129</b>	<b>LOWER GEARCASE</b>	<b>E MOTOR</b>	<b>PLASTIC</b>	<b>65:12</b>	<b>DD, F, FP, GP, DP, SW</b>	<b>GREASE or OIL</b>
E8301947PLOCK	8301947	UPPER GEARCASE	E MOTOR	FELT	65:12	DD, F, FP, GP, DP, SW	GREASE
<b>E8301947COMBO</b>	<b>8301947</b>	<b>UPPER GEARCASE</b>	<b>E MOTOR</b>	<b>FELT</b>	<b>65:12</b>	<b>DD, F, FP, GP, DP, SW</b>	<b>GREASE or OIL</b>
E8302646PLOCK	8302646	LOWER GEARCASE	E MOTOR	FELT	65:12	DD, F, FP, GP, DP, SW	GREASE
<b>E8302646COMBO</b>	<b>8302646</b>	<b>LOWER GEARCASE</b>	<b>E MOTOR</b>	<b>FELT</b>	<b>65:12</b>	<b>DD, F, FP, GP, DP, SW</b>	<b>GREASE or OIL</b>
E8429098PLOCK	8429098	UPPER GEARCASE	D29/43	FELT	71:18	REPLACES 8283441	GREASE
<b>E8429098COMBO</b>	<b>8429098</b>	<b>UPPER GEARCASE</b>	<b>D29/43</b>	<b>FELT</b>	<b>71:18</b>	<b>REPLACES 8283441</b>	<b>GREASE or OIL</b>
E8283442PLOCK	8283442	LOWER GEARCASE	D29/43	FELT	71:18		GREASE
<b>E8283442COMBO</b>	<b>8283442</b>	<b>LOWER GEARCASE</b>	<b>D29/43</b>	<b>FELT</b>	<b>71:18</b>		<b>GREASE or OIL</b>
E9557134PLOCK	9557134	UPPER GEARCASE	D29/D44	PLASTIC	NARROW 71:18		GREASE
<b>E9557134COMBO</b>	<b>9557134</b>	<b>UPPER GEARCASE</b>	<b>D29/D44</b>	<b>PLASTIC</b>	<b>NARROW 71:18</b>		<b>GREASE or OIL</b>
E9559650PLOCK	9559650	LOWER GEARCASE	D29/D43	PLASTIC	NARROW 71:18		GREASE
<b>E9559650COMBO</b>	<b>9559650</b>	<b>LOWER GEARCASE</b>	<b>D29/D43</b>	<b>PLASTIC</b>	<b>NARROW 71:18</b>		<b>GREASE or OIL</b>
E8344966PLOCK	8344966	UPPER GEARCASE	D29CC	FELT	NARROW	G18, GL22	GREASE
<b>E8344966COMBO</b>	<b>8344966</b>	<b>UPPER GEARCASE</b>	<b>D29CC</b>	<b>FELT</b>	<b>NARROW</b>		<b>GREASE or OIL</b>
E8344965PLOCK	8344965	LOWER GEARCASE	D29CC	FELT	NARROW	GT22, G26, GT26	GREASE
<b>E8344965COMBO</b>	<b>8344965</b>	<b>LOWER GEARCASE</b>	<b>D29CC</b>	<b>FELT</b>	<b>NARROW</b>		<b>GREASE or OIL</b>
E40105121PLOCK	40105121	UPPER GEARCASE	70ACE	PLASTIC			OIL
<b>E40105121COMBO</b>	<b>40105121</b>	<b>UPPER GEARCASE</b>	<b>70ACE</b>	<b>PLASTIC</b>			<b>GREASE or OIL</b>
E4015120PLOCK	4015120	LOWER GEARCASE	70ACE	PLASTC			OIL
<b>E4015120COMBO</b>	<b>4015120</b>	<b>LOWER GEARCASE</b>	<b>70ACE</b>	<b>PLASTC</b>			<b>GREASE or OIL</b>
E40017436PRD	40017436	GEARCASE CAP	ENHANCED PLASTIC CAP FOR GREASE STYLE GEARCASES				



Also Offering **Original** Design Grease & Oil Gearcases - PowerLok  
See Page 8 for Details!



# GE GEARCASES



REF. #	DESCRIPTION	TM	RATIO	LOCOMOTIVES	LUBE
41D731910G2 46756697G2	UPPER GEARCASE	E8	74:18	B23 -7, M630, U18B, U23B, U25C, U25B, U30B, U30C, U33C, U36C, C -424	GREASE
41D731910G8 6756697G3	LOWER GEARCASE	E8	74:18	B23 -7, M630, U18B, U23B, U25C, U25B, U30B, U30C, U33C, U36C, C -424	GREASE
41D731910G7 or G9 6756697G1 or G11	SET GEARCASE	E8	74:18	B23 -7, M630, U18B, U23B, U25C, U25B, U30B, U30C, U33C, U36C, C -424	GREASE
41D732358P1 41D732364G2	UPPER GEARCASE	AF	83:20	C30 -7, C30 -7A, C36 -7, C39 -8, C40 -8, C40 -8M, C40 -8, C40 -9, DASH 8 -32B	GREASE
41D732358P1 41D732364G3	LOWER GEARCASE	AF	83:20	C30 -7, C30 -7A, C36 -7, C39 -8, C40 -8, C40 -8M, C40 -8, C40 -9, DASH 8 -32B	GREASE
41D732364G1	SET GEARCASE	AF	83:20	C30 -7, C30 -7A, C36 -7, C39 -8, C40 -8, C40 -8M, C40 -8, C40 -9, DASH 8 -32B	GREASE
41D735356P1 41D735347P2	UPPER GEARCASE	AG	83:20	C40 -8 (Reminder: An AG will fit an AF)	OIL
41D735868P1	LOWER GEARCASE	AG	83:20	C40 -8 (Reminder: An AG will fit an AF)	OIL
41D735359G3 Or 41D735668G1	SET GEARCASE	AG	83:20	C40 -8 (Reminder: An AG will fit an AF)	OIL
41D735347P2	UPPER GEARCASE	AH	83:20	C40 -CW, GE DASH 9'S	OIL
41D735340P6 41D735797P1	LOWER GEARCASE	AH	83:20	C40 -CW, GE DASH 9'S	OIL
41D735315G3	SET GEARCASE	AH	83:20	C40 -CW, GE DASH 9'S	OIL
41D730230G1 Or G3 970X21 41D732863G3	SET GEARCASE	761	NARROW GAGE	Set's Only 1 1/2" - 6 thread w/ caps  Sets Only 1" - 8 thread w/ caps	GREASE
41D735642P1	LOWER GEARCASE AMTRAK	AH	83:20	P40 - P42	OIL
41D735644P1	UPPER GEARCASE AMTRAK	AH	83:20	P40 - P42	OIL
41D735428G1	UPPER GEARCASE	761	NARROW GAGE	A22, 23, or 24	GREASE
41D735428G2	LOWER GEARCASE	761	NARROW GAGE	A22, 23, or 24	GREASE
41D736089G3	UPPER GEARCASE	C44			OIL
41D736091G1	LOWER GEARCASE	C44			OIL
41D7366091G5	LOWER GEARCASE	C44		SUPERCEDED BY 41D7366091G6	OIL
41B538243P1 41AA230409G3	GE CAP	BASE MADE WITH GALVANIZED STEEL WITH RUBBER SEAL			

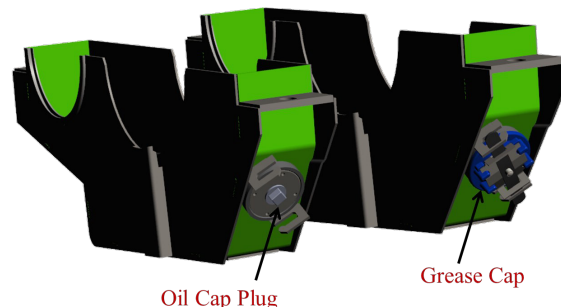
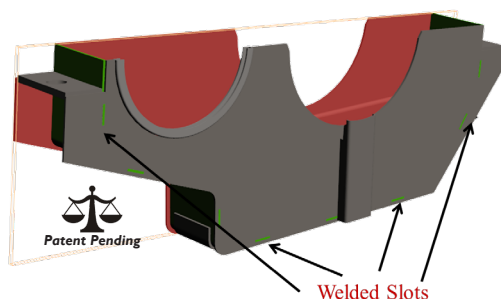
**Also Offering *Original* Design Grease & Oil Gearcases - PowerLok**  
**See Page 8 for Details!**

# PowerLok Toughcase®

## Combination & Standard Oil or Grease Gearcase



*"Uniting Innovation, Engineering, Manufacturing and Distribution"*



### Tab and Slot Design

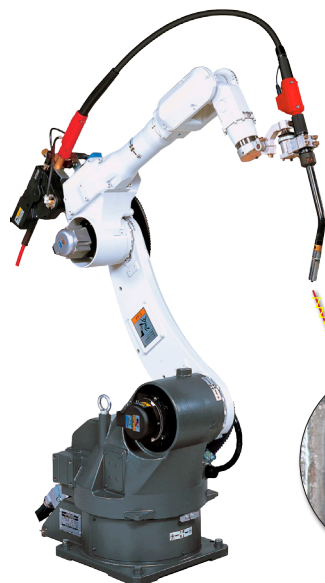
- 100% Alignment For Better Fit and Operation
- Strengthens the Seams for **Heavy Impact Resistance**
- More Welding Points **Improved Integrity and Strength**
- CNC Robotic Welder Provides Stronger Welds vs. That of Contemporary Welds
- CNC Robotic Welder Provides Less Heat Which Lowers Fatigue Typically Found on Contemporary Welds
- Patent Design - Mechanical and Electro Mechanical

### Dual Cap Purpose

- Cap Drilled and Pinned to Prevent Improper Use

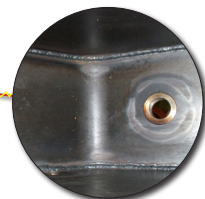
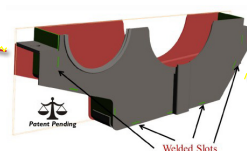
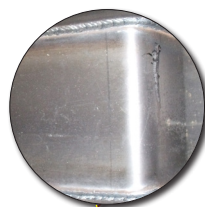
### Benefits

- Less Inventory with Combination Oil/Grease Design (Standard Style Also Available)
- Reduction in Hazard Material Spills
- Reduction in Down Time Due to Small Derailments
- Increased Reliability and Service Life



**Our New CNC Robotic Welder provides:**

- ***stronger welds vs. that of contemporary welds***
- ***less heat which lowers fatigue typically found on contemporary welds***



**POWERAIL**

205 Clark Road  
Duryea, PA 18642

Phone: 570-883-7005

Fax: 570-883-7006

Sales@ePowerRail.com

