

Featured Products and Enhancements



POWER RAIL

CREATIVE INNOVATIONS...CONTINUING TRADITION

PowerSeal Solutions

A PowerRail Quality Company

Combining the knowledge and experience of the PowerRail Engineering and Quality teams, with MacroSeal, Inc., a full-line manufacturer and fabricator of fluid-sealing products, PowerRail, Inc. is proud to bring you PowerSeal Solutions™.

PowerSeal Solutions™ offers a complete line of gaskets and seals including, our PS-1 Line which meets or exceeds OEM specifications, our PS-2 C-Swell™ Line for demanding applications that require reliability and true sealing solutions, and our newest addition...

The B-SureSeal™

POWERRAIL PART NO.	PIPE SIZE	PIPE O.D.
TBA	3/8"	0.675
E8479542PS*	1/2"	0.84
E8479543PS*	3/4"	1.05
E8479544PS*	1"	1.315
E8479598PS*	1 1/4"	1.66
E8479599PS*	1 1/2"	1.9
E8479600PS*	2	2.375
E8479601PS*	2 1/2"	2.875
E8479602PS*	3	3.5
E8479603PS*	3 1/2"	4
E8479604PS*	4	4.5
E40068473PS*	5	5.563
E8406231PS*	6	6.625

*PS1 Black Nitrile *PS2 VPS B-SureSeal

PowerSeal Solutions™ is pleased to offer our New Line of O-Rings, Marman Seals and related Engine Seals that offer exceptional reliability and STOP LEAKS.

- Made with pure FKM and Viton® A-type Family material - **NO fillers**
- Injection molded for a pure and high-precision fit with true reliability
- Superior performance under high operating temperatures from -20°F to +400°F
- Resistance to oil, fuel, and additives
- Remains flexible in service and won't "set" like standard seals



PowerSeal Enhanced Expansion Joint Gaskets

PS-THERMASEAL for 2,000°F

- Tin Plated Steel - Prevent from Rusting
- Proven Gold Standard Ceramic Filler
- Not Painted - No Paint to burn, No Fumes or Hazards
- High Temperature rated up to 2,000°F
- Designed for Lower Compressibility Ratio - Will Not Beat Out
- Better Load Retention and Thermal Cycling



Replaces 40026936 10" Expansion Joint
 40026937 14" Expansion Joint
 40055466 Exhaust Stack
 40026939 Expansion Joint to Turbo
 9571663 Exhaust Cover 710
 40026938 Adapter to Expansion Joint

Ask about our new Clad Exhaust Gasket for extreme heat conditions! Offers extra sealing capability and approved by Class 1's





LED Bulbs



With the latest Cree LED technology, these bulbs provide
IP67 protection from water damage.

Field Tests with Class I's, Regionals, Passenger Transit, and other applications have proven that these unique **patent pending designs** offer true reliability and performance.

LED Advantages:

- Rated Life 50,000 Hours vs. 1,000 of Standard Bulb (50 to 1 Life)
- True LED Circuit Board Reliability and Durability
- Reduced Generator Voltage Draw Provides Fuel Savings
- No EMI Interference
- Reverse Polarity Protected
- Operates on Voltage Range of 50V DC to 80V DC
- No Filaments or Glass to Break (Enhanced Protective Globe)
- Reduced Labor and Maintenance Labor Costs
- Eliminates FRA Infringements Associated With Standard Bulbs



Smart Light Source
LED IP67
Waterproof 50A19



SLS30S11 LED Bulb -
100,000 Life Hours
Full 360° Viewing Angle



LED 75V



Headlight and Ditch Lights

Part # RS50A19LED-6WLL (AAR 6Watt)

Part# RS50A19LED-3WCORN (Corn Style)

Replaces OEM references:

25A19 - 50A19 - 8080404 - 8080403

8090358—8094886 - 41A210382P2

T8 LED Tube Lights

T8 LED Tubes are perfect for refurbishment projects where energy consumption and long-life reliability are important. With a 50,000-hour life cycle to reduce maintenance costs and 22W energy consumption per 4-foot length, this LED Tube also helps to reduce your carbon footprint significantly.

Available in three different color temperatures - warm, neutral or cool white. This light is the direct replacement for both T8 and T12 fluorescent lighting, providing an instant clip-in solution.

Technical Details

PowerRail Part #	Operating Voltage	Power	Length	lpw	
				Clear	Frost
SLS-T8V-G60-24V-10W-__-__	24V DC	10W	588mm	120 lpw	110 lpw
SLS-T8V-G120-24V-22W-__-__	24V DC	22W	1,198mm	120 lpw	110 lpw
SLS-T8V-G150-24V-28W-__-__	24V DC	28W	1,498mm	120 lpw	110 lpw
SLS-T8V-G60-240V-10W-__-__	240V AC	10W	588mm	120 lpw	110 lpw
SLS-T8V-G120-240V-22W-__-__	240V AC	22W	1,198mm	120 lpw	110 lpw
SLS-T8V-G120-240V-28W-__-__	240V AC	28W	1,498mm	120 lpw	110 lpw

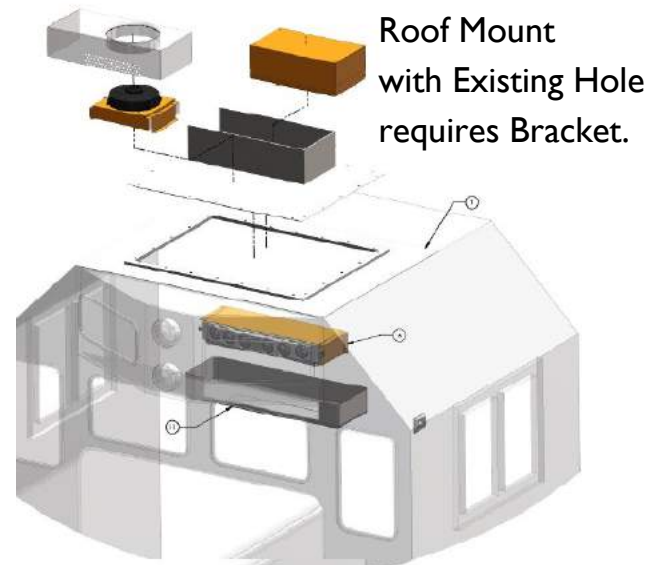
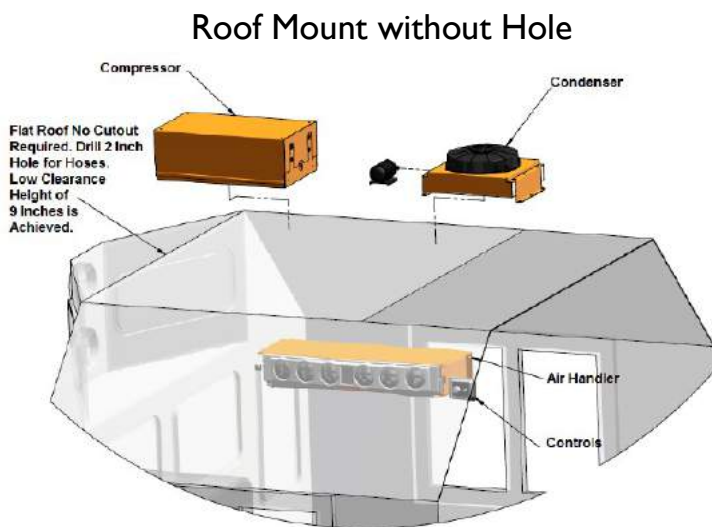
***Ask about other voltages also available**



REDUCED POWER CONSUMPTION = FUEL SAVINGS

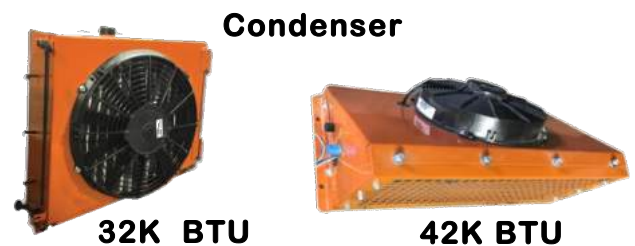
ORANGE Locomotive Air Conditioner

Don't wait - prepare your locomotive now with the
Orange Split-type Air Conditioner System from PowerRail!
32K BTU for Switchers and 42K BTU for Road Units

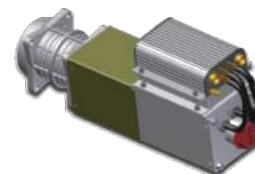


PowerRail, an M-1003 AAR Certified Quality company, proudly offers the Orange Split-type Air Conditioner System manufactured in North America.

- The **ONLY** direct 72 VDC driven Locomotive Cab Air Conditioning System that does **NOT NEED AN INVERTER**
- Runs directly off the locomotive's batteries and saves up to 30% in energy consumption
- Unique Modular Design for easy operations during maintenance
- Custom configured to fit any cab



Also available, In-floor Models with Heater



**Compressor - 72V Brushless Motor
NO Inverter!**



Evaporator - Air Handler

REDUCED POWER CONSUMPTION = FUEL SAVINGS

PowerRail "Provident Heat¹™"



Don't wait - prepare your locomotive with the Provident H¹™ High Efficiency Heater

With the latest in advanced ceramic material, a unique modular design, and lightweight composites, PowerRail is offering our new line of Cab Heaters. The Provident Heat¹™, a Positive Temperature Coefficient (PTC) heater, offers true reliability and performance while using less power. The Provident Heat¹™ line consist of both Flush Mounted and Floor Mounted, with and without Defrost.

Provident Heat¹™ Advantages:

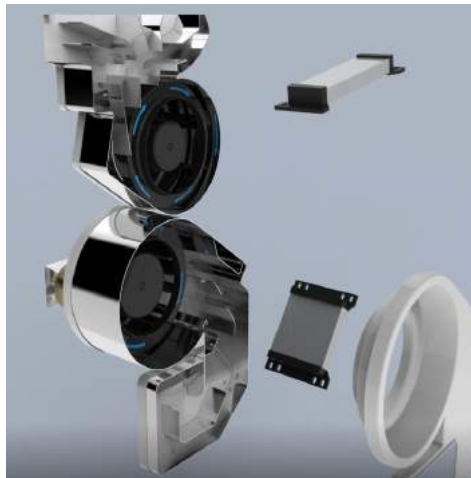
- Positive Temperature Coefficient (PTC) heaters are made from an advanced ceramic material, enabling safe, powerful, and energy efficient heat transfer.
- Energy efficient heating system and design.
- PCB designed and controlled electronics and management system.
- Up to 50% reduction in energy usage. Extremely high efficient!
- Up to 50% smaller in depth - adds floor space to Cab. Direct drop in.
- Modular Design for fast access and easy repair of all components.
- Solid state controls for ease of operation
- UL Listed - AAR Approved Quality



Solid State UL Listed Controls

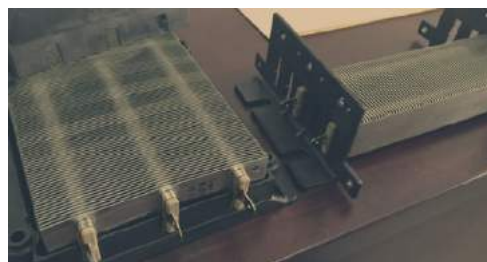


Floor Mount - With or Without Defrost



True Blue™ Modular Design

Flush Mount



**High Efficient
Advanced Ceramic
Heating Coils**

Synergy between PowerRail, Inc. and PS Technology at it's finest!

These two organizations are working together to develop both floor and table top simulator units which can be utilized in the classroom, at locomotive facilities, and can also be portable with the use of a trailer.



Acid Battery Water Level Indicator

PowerRail is now offering a simple solution for viewing water levels in Acid Storage Batteries.

Our part # PRD16186371 utilizes a float with Min/Max lines for easy visual inspection.



Custom Load Boxes

PowerRail Locomotive Services, located in Monroe, Georgia, and PowerRail Electronics, located in Rincon, Georgia, have teamed up to offer a complete custom-made Load Box to fit the needs of our customers.

We offer New or Remanufactured Fans and Grids for any budget, as well as custom paint to fit the color scheme of your railroad.

- 2,000HP Load Box with (4) grids and (1) 36hp fan
- 3,000HP Load Box with (6) grids and (2) 18hp fans
- 4,000HP Load Box with (8) grids and (2) 18hp fans



Here are just a few of the products that PowerRail, Inc. manufactures right here at home.

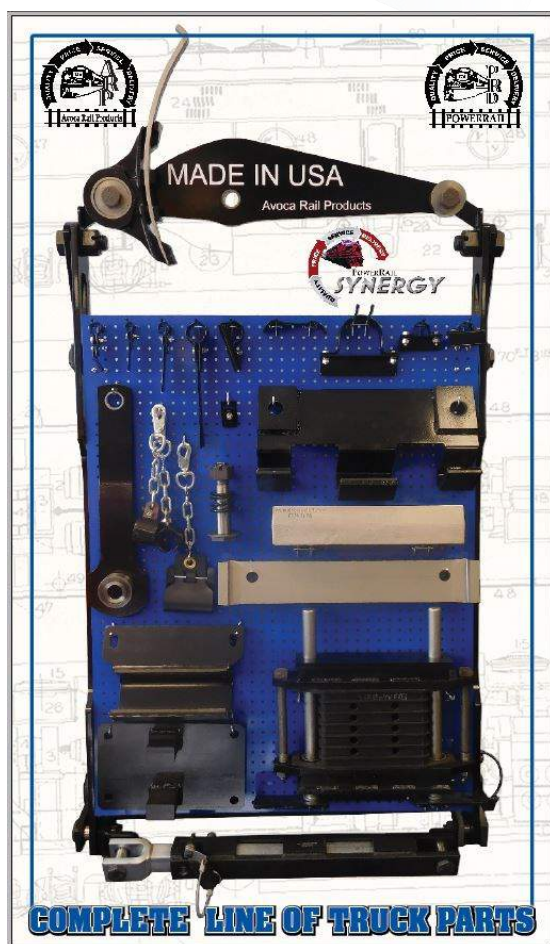


Truck Parts



We offer commonly used and complete assembly part numbers E8106539 and E8354463 and the individual leaves for both assemblies.

- **E8106539** nest for locomotive weight up to 268K lbs.
- **E8354463** nest for locomotive weights 268k to 288k lbs.
- **E8413510** nest for locomotive weight over 288k lbs.
- **E9568083** for low profile OEM single shoe rigging trucks.
- **E8100102** for AAR Universal Switcher Trucks.



We offer a complete line of Truck-related parts and components.
Manufactured in the USA.

PowerRail Locomotive Services, a division of PowerRail, Inc., offers repair/rebuild/remanufacturing services for the following EMD truck types to customer specifications or PowerRail Locomotive Services scope.



GP TRUCK - BLOMBERG

Hyatt or GG Bearings
Single or Clasp Brake Shoes
Spring Bolster



GP - BLOMBERG M

Hyatt or GG Bearings
Single or Clasp Brake Shoes
Suspension Pad Bolster



EMD SWITCHER TRUCK

Friction or Roller Bearing
Duplex Brake Cylinder

PowerRail, Inc.

205 Clark Road Duryea, PA 18642

Phone: 570-883-7005 Sales@EPowerRail.com

www.ePowerRail.ComTM