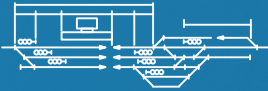


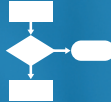


Individual and complex approach

Engineering



Design



*Construction-and-
installation
and pre-commissioning
works*



Manufacture

IRIS
Certification

*Centralized
control at stations*



*Traffic safety
at level-crossings*



*Implementation
in 15 countries*



Axle counting



*Control of
railway hauls*



Staff training



24-hour technical support

Maintenance



For more than 20 years R&P Centre “Promelectronica” performs development, production and turnkey supply of railway signalling and telecommunication systems for the mainline railway transport, approach tracks for industrial enterprises and metro lines.

COMPLEX OF SYSTEMS AND ACTIVITIES:

- **complex of signalling and telecommunication systems;**
- **complex of system implementation works;**
- **support and maintenance of implemented systems.**

Being one of the leading developers, R&P Centre “Promelectronica” executes the whole cycle of works on introduction and operation of its developments from design and pre-commissioning to disposition, including service maintenance, lifetime design supervision and modernization of system.

Due to fundamental research knowledge base R&P Centre “Promelectronica” is capable to develop unique train traffic safety systems ensuring high quality and reliability. Several research laboratories, design department, pilot-line production are constituent part of the company. Specialists of R&P Centre “Promelectronica” have laboratories for electromagnetic compatibility tests, mechanical and climatic effect resistance tests, trial ground for operation tests.

R&P Centre “Promelectronica” has its own training department for the maintenance staff. While commissioning of construction objects the training is performed on site. At present, R&P Centre “Promelectronica” has several engineering and production sites in Ekaterinburg, branches in Moscow, Saint-Petersburg and Khabarovsk, service centre in Uzbekistan.

In 2014 R&P Centre “Promelectronica” was assessed and found to be in compliance with the International Railway Industry Standard IRIS for the activity of design, development, manufacture and maintenance of railway signalling and telecommunication and its components. All supplied systems are provided with necessary standard technical documentation and have compliance certificates.

THE PRINCIPAL PRODUCTS, DEVELOPED BY R&P CENTRE “PROMELECTRONICA” AND OFFERED FOR IMPLEMENTATION:

- microprocessor interlocking MPC-I;
- axle counting systems ESSO and ESSO-M;
- semi-automatic block system MPB;
- level-crossing protection systems MAPS and MAPS-M;
- automatic block system with voice-frequency track circuits ABTC-I;
- wheel sensor DKU “KOLDUN”.

Nowadays, systems manufactured by R&P Centre “Promelectronica” control train movement and ensure train traffic safety on main lines and tens of large industrial enterprises of Russia, CIS countries, EU and other countries.

R&P CENTRE “PROMELECTRONICA” WAS INVOLVED IN THE FOLLOWING LARGE PROJECTS:

- implementation of CTC on the section Urgal – Izvestkovaya of Far-Eastern railway (RZD);

- complex modernization of signalling equipment on Sakhalin railway (RZD);
- construction of new line Khrom-Tau – Irgiz – Altynsarino in Kazakhstan;
- complex reconstruction of signalling equipment on Georgian railways;
- modernization of railway infrastructure on Sumatra, Indonesia;
- modernization of signalling equipment on section Korotchaevo – Noviy Urengoy of Yamal railroad company;
- complex modernization of signalling equipment on South-Caucasian railway (RZD);
- construction of new line Tashguzar – Kumkurgan in Uzbekistan;
- construction of new speed line Tashkent – Samarkand in Uzbekistan;
- construction of new line Komsomolsk – Sovetskaya Gavan of Far-Eastern railway (RZD);
- installation of signalling equipment on the line Tumangan – Radzhin in North Korea;
- complex modernization of train traffic control systems for MMC Norilsk Nickel;

modernization of railway infrastructure of such enterprises as PAO Severstal, OJSC Magnitogorsk Iron and Steel works, OJSC Apatit, OJSC NTMK, OJSC Mikhailovskiy GOK, OJSC Pervouralsk pipe plant, OJSC Novolipetsk metallurgical plant, OJSC West-Siberian metallurgical plant and others.

*Station operator's working terminal
ARM DSP (MPC-I)*



*Tower equipment
(ESSO-M)*



MPB controller's block



MAPS level-crossing unit



JSC "R&P Centre "Promelectronica":

- ✓ **one of the leading engineering companies in Russia**
 - ✓ **over 20 years' experience on the market of railway signalling and telecommunication systems**
 - ✓ **project implementations in 15 countries**
-
- ✓ **axle counting systems**
 - ✓ **microprocessor interlocking systems**
 - ✓ **train traffic safety systems for the railway lines and level-crossing**

**128 a Malysheva str.,
620078 Ekaterinburg, Russia**

Tel.: +7 (343) 358-55-00

Fax: +7 (343) 378-65-15

info@npcprom.ru

www.npcprom.ru