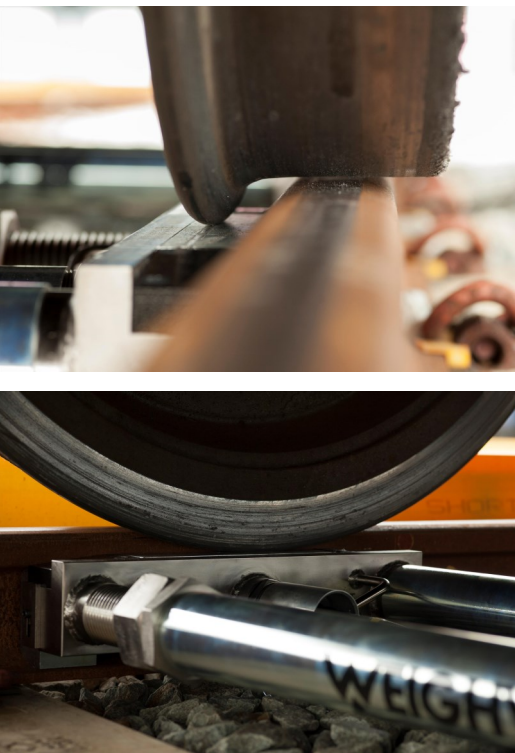


## Single Axle Weighing System



Patent Approved

### STATIC, INDIVIDUAL WHEEL WEIGHT, TRAIN WEIGHING SYSTEM

Weighwell Engineering Ltd were the first company to provide portable train weighing systems. Today with over 28 years experience and knowledge we continue to be the industry leaders with 100's of systems worldwide.

The portable Single Axle Train Weighing System is x1 PTW unit and weighs the rail vehicles statically (**axle by axle**). This provides excellent accuracy and unrivalled flexibility.

The Single Axle Weighing System can be carried by two people to any location and installed very quickly. Due to its portability and ease of installation, the single axle portable rail scale can weigh on multiple lines or positions.

Once installed, the portable rail scale gives the rail engineer the weight data for individual wheels, axles, bogies and railcars to establish if weight distribution is even.

The Single Axle Weighing System is an ideal solution for providing individual wheel weight data and highlighting possible weight issues for both locomotives and passenger railcars.

An imbalance in weight could cause increased wear to the rail vehicle components and lead to issues in loading symmetry.

#### KEY BENEFITS OF THE PTW SINGLE AXLE TRAIN WEIGHING SYSTEM

- PTW length of 500mm allows for greater flexibility without the need to remove clips or rail fastenings.
- Portable, quick and easy to install.
- Eliminates the need to install expensive weighbridges.
- Saves time and costs.
- Can be used for vehicle modifications and bogie changes.
- Factory pre-calibration eliminates the need for transportation of test weights or calibrated wagons.

The Portable Train Weigher (PTW) for single axle static weighing is an excellent investment in terms of safety, accuracy and potential cost savings and with train weighing systems available for hire or purchase, the PTW will satisfy any budget.

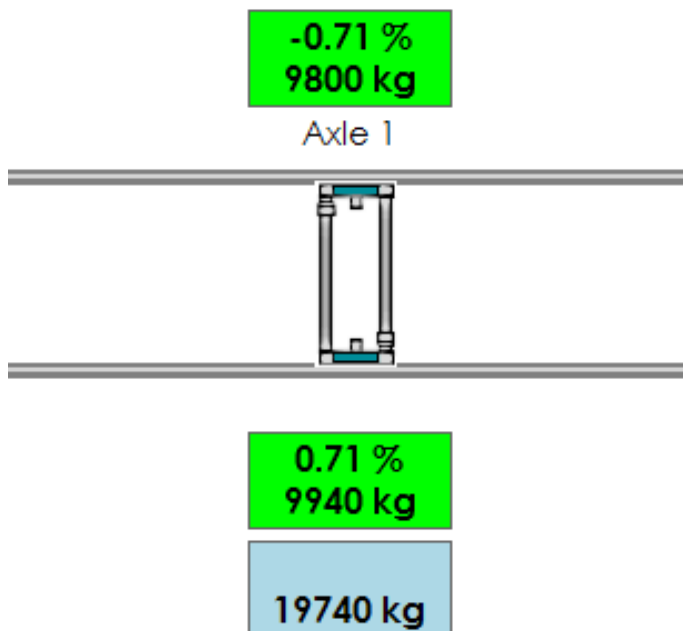
## Single Axle Weighing System

### MAIN KEY FEATURES



Our PTW allows for greater flexibility without the need to remove rail fastenings due to its length of only 500mm. This results in a more convenient installation without the need for expensive or time consuming civil works.

### PTWX SOFTWARE



Designed for train manufacturing and train maintenance depots Our in-house developed train weighing software (ptwX) is a single intuitive solution that provides highly accurate individual wheel weights and has a variety of customisable options such as different report layouts, different wheel numbering and tolerance changes.

### TECHNICAL SPECIFICATION

- **Length of PTW:** 500mm.
- **Approximate weight:** 34kg (heaviest section).
- **Weighing capacity:** 15000kg per wheel (30000kg per axle).
- **Increment size:** 10kg.
- **Materials:** High quality tool and mild steels.
- **Temperature range:** -30°C to +70°C.
- **Power supply:** 110 - 240VAC / 12VDC.
- **Protection class:** IP67.
- **Mounting:** Rail keys to fit most rail types.
- **Installation time:** 10-15 minutes.
- **Accuracy:** +/-1% dependent on site conditions.

### PTW INDICATOR



The PTW indicator is easy to use, allows for a quick selection of options and provides a cost effective solution to weighing rail vehicles. Designed for the international rail market with easy to use commands and functions the PTW indicator provides instant weighing results via printout or CSV file.

\*The PTW is not trade approved and specifications subject to change.