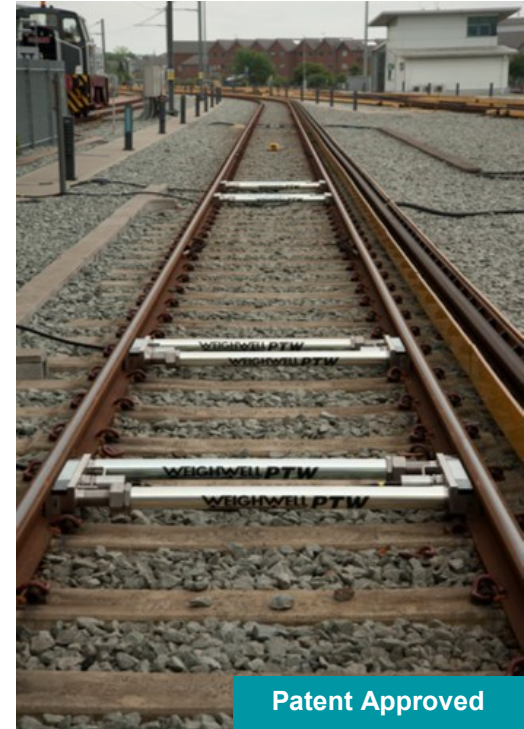
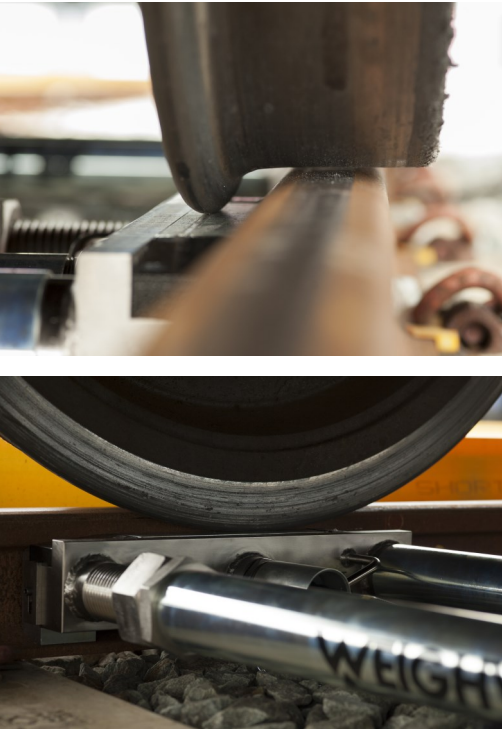


## Full Car Weighing System



Patent Approved

### STATIC, INDIVIDUAL WHEEL WEIGHT, TRAIN WEIGHING SYSTEM

Weighwell Engineering Ltd were the first company to provide portable train weighing systems. Today with over 28 years experience and knowledge we continue to be the industry leaders with 100's of systems worldwide.

The portable Full Car Weighing System (also known as a Full Train Weighing System) provides an accurate and advanced solution for wheel balancing.

The Full Car Weighing System is an ideal innovative solution for weighing a complete rail vehicle (**four** or **six** axles) with a PTW unit under every axle.

Once installed, our PTW and ptwX software gives the rail engineer the weight data for individual wheels, axles and railcars to establish if weight distribution is even.

The advantage of weighing a complete rail vehicle with multiple PTW units is that it helps in reducing train maintenance depot costs and saves time whilst increasing rail safety.

### KEY BENEFITS OF THE PTW FULL CAR WEIGHING SYSTEM

- Ideal for 2x2 or 2x3 axle bogies with a maximum weight capacity of 120000kg and 180000kg.
- A key interface with our industry leading ptwX train weighing software or PTW indicator.
- Vehicles weighed statically in real time, providing excellent accuracy and unrivalled flexibility.
- Portable, quick and easy to install.
- Rail industries favourite for train manufacture, maintenance and refurbishment.
- Factory pre-calibration eliminates the need for the transportation of test weights or calibrated wagons.
- Achievable accuracy of 0.1% dependent on track conditions.

Our Portable Train Weigher (PTW) for full car weighing allows for greater flexibility which is fundamental when installing multiple PTW units. The benefits of this are:

- No need to remove clips or rail fastenings
- Convenient installation
- More reliable weighing
- The lightest PTW in the world

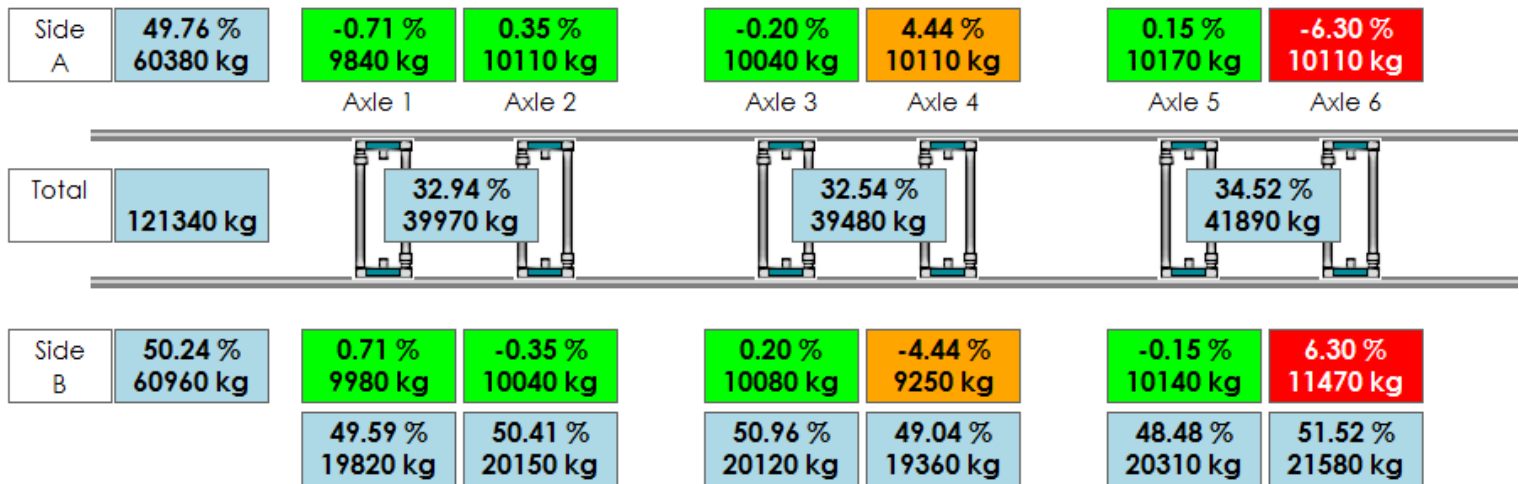
## Full Car Weighing System

### IN-HOUSE, INTUATIVE, MULTILINGUAL SOFTWARE FOR TRAIN WEIGHING SYSTEMS

Our Full Car Weighing Systems operate via our ptwX software or PTW indicator which uses our expert knowledge in train weighing and provides our customers with a greater understanding of potential issues relating to an imbalance of weight.

The importance of weighing a total rail vehicle with multiple PTW units is that the results are instantaneous. With the whole carriage/railcar level there is no distortion in gradient (only a couple of millimetres can alter the weighing result by up to a quarter of a tonne). This resolves the previous trial and error approach, ultimately providing a safer, faster and more cost effective solution.

#### PTWX SOFTWARE



Our intuitive, multilingual ptwX software is designed and developed in-house and provides real time 'live' displays. Multiple customisations such as weighing units, wheel numbering and information on weight differentials (tolerances) are also available.

Our easy to use train weighing software also allows for fully customised reporting options to be selected with the ability for reports to be exported in standard formats such as pdf and csv.

#### PTW INDICATOR

Specifically designed and programmed for the weighing of rail vehicles, the PTW indicator is easy to operate and understand. The PTW indicator is a cost efficient solution that is also traceable to OIML approvals.

Situated within an robust carrying case the IP65 rated PTW indicator provides weighing units in kilogrammes (kg) and pounds (lb) as standard.

Weighing information on the individual wheel, axle, bogie and railcar can either be printed out or exported multiple times via the use of a USB stick into a .csv file.



\*The PTW is not trade approved and specifications subject to change.