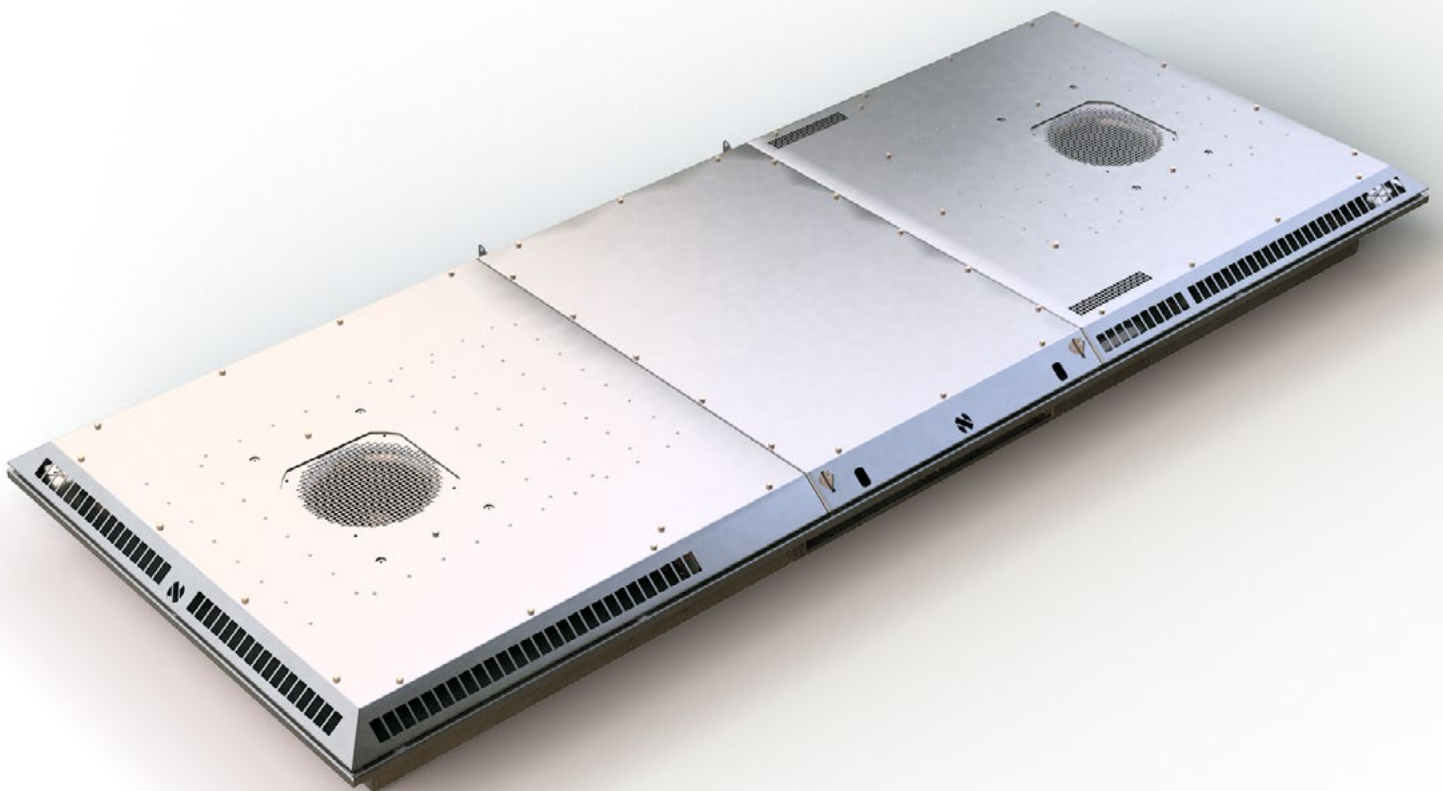


RVKE 224-D APM

Peplemover Saloon unit HVAC

Extremely flat plug-in air conditioning unit for roof mount. Especially designed for the requirements of this application it offers proven reliability and performance. By using EC supply fans the supply air will be continuously adjusted. This allows a high comfort with minimum noise emission and maximum energy efficiency.



Technical data

RVKE 224-D APM Peoplemover Saloon unit HVAC

Customer Platform	United Streetcar (Oregon Ironworks) / Doppelmayr Peoplemover
City of operation	Oakland USA
Cooling capacity	24,0 kW
Heating capacity	12,0 kW
Air Flow	0-700 m ³ /h
Length Width Height	3648 mm 1442 mm 295 mm
Weight	415 kg
Power supply	400 V-3-50 Hz 24 V DC
Summer conditions - outside	35 °C
Winter conditions - outside	-10 °C

