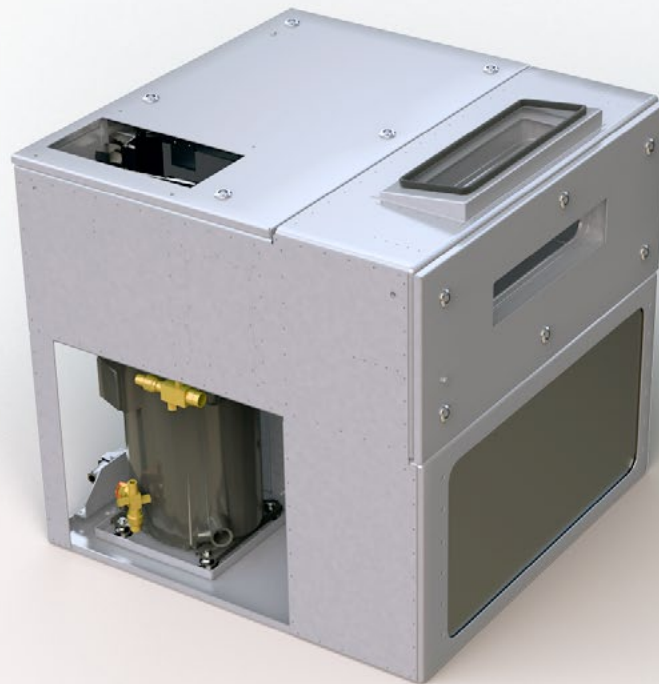


RVKE 16-E

Regional Train Driver's Cab HVAC

Plug-in air conditioning unit for underfloor mount on driver cabs. Especially designed for the requirements of this application it offers proven reliability and performance.



Technical data

RVKE 16-E Regional Train Driver's Cab HVAC

Customer Platform	Stadler Pankow GmbH Flirt
City of operation	Berchtesgaden / Salzburg
Cooling capacity	5,6 kW
Heating capacity	4,0 kW
Air Flow	300-800 m ³ /h
Length Width Height	800 mm 800 mm 750 mm
Weight	147 kg
Power supply	400 V-3-50 Hz 24 V DC
Summer conditions - outside	35 °C
Winter conditions - outside	-20 °C

