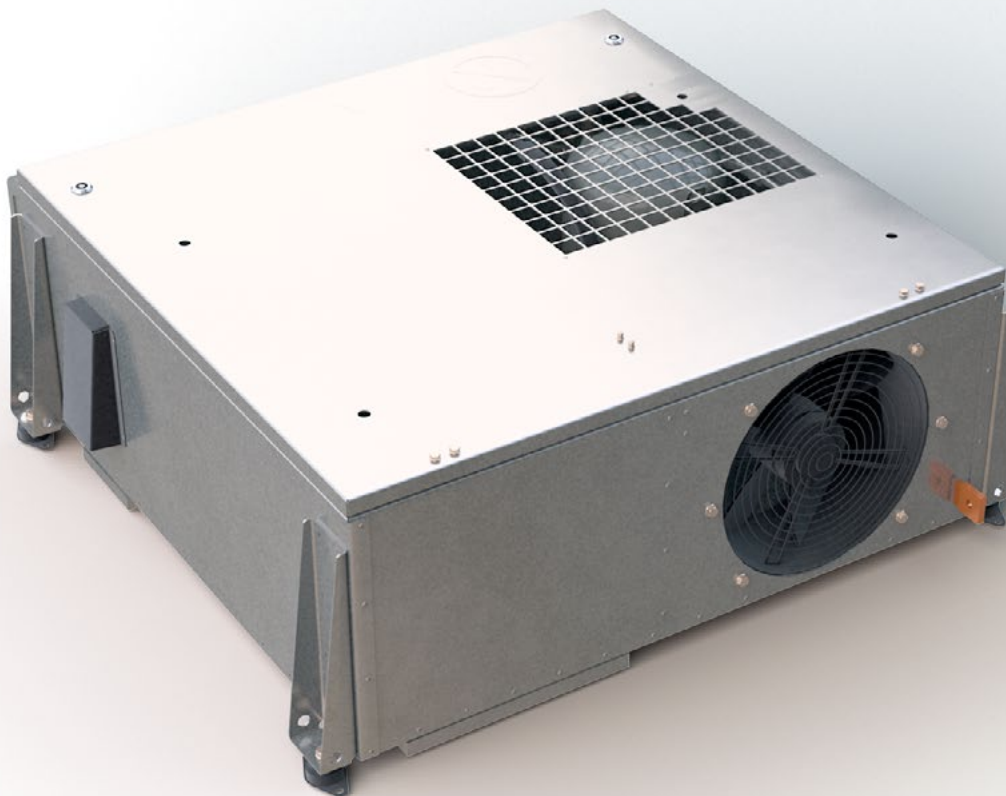


# RVKE 14-D

## Tramway Driver's Cab HVAC

---

Plug-in air conditioning unit for roof mount on driver cabs. Especially designed for the requirements of this application it offers proven reliability and performance.



# Technical data

## RVKE 14-D Tramway Driver's Cab HVAC

<b>Customer   Platform</b>	Stadler Pankow GmbH   Variobahn/Tango
<b>City of operation</b>	Bochum, Germany; Lyon, France
<b>Cooling capacity</b>	4,0 kW
<b>Air Flow</b>	450 m <sup>3</sup> /h
<b>Length   Width   Height</b>	930 mm   900 mm   395 mm
<b>Weight</b>	115 kg
<b>Power supply</b>	400 V-3-50 Hz 24 V DC
<b>Summer conditions</b> - outside	35 °C
<b>Winter conditions</b> - outside	-20 °C

