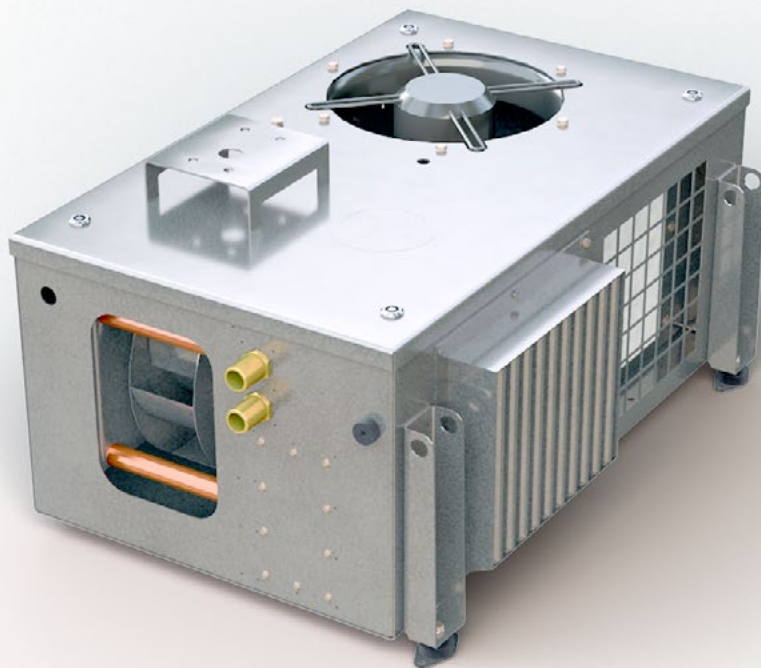


# LKG-B10

## Tramway Recooling unit for transmission

---

Cooling unit for cooling of traction motor and converter for roof mount. Especially designed for the requirements of this application it offers proven reliability and performance.



# Technical data

## LKG-B10 Tramway Recooling unit for transmission

<b>Customer   Platform</b>	Stadler Altenrhein AG   Variobahn
<b>City of operation</b>	Basel / Geneva
<b>Cooling capacity</b>	10,0 kW
<b>Air Flow</b>	1200 m <sup>3</sup> /h
<b>Length   Width   Height</b>	947 mm   580 mm   414 mm
<b>Weight</b>	92 kg
<b>Power supply</b>	400 V-3-50 Hz
<b>Summer conditions</b> - outside	35 °C
<b>Winter conditions</b> - outside	-20 °C

