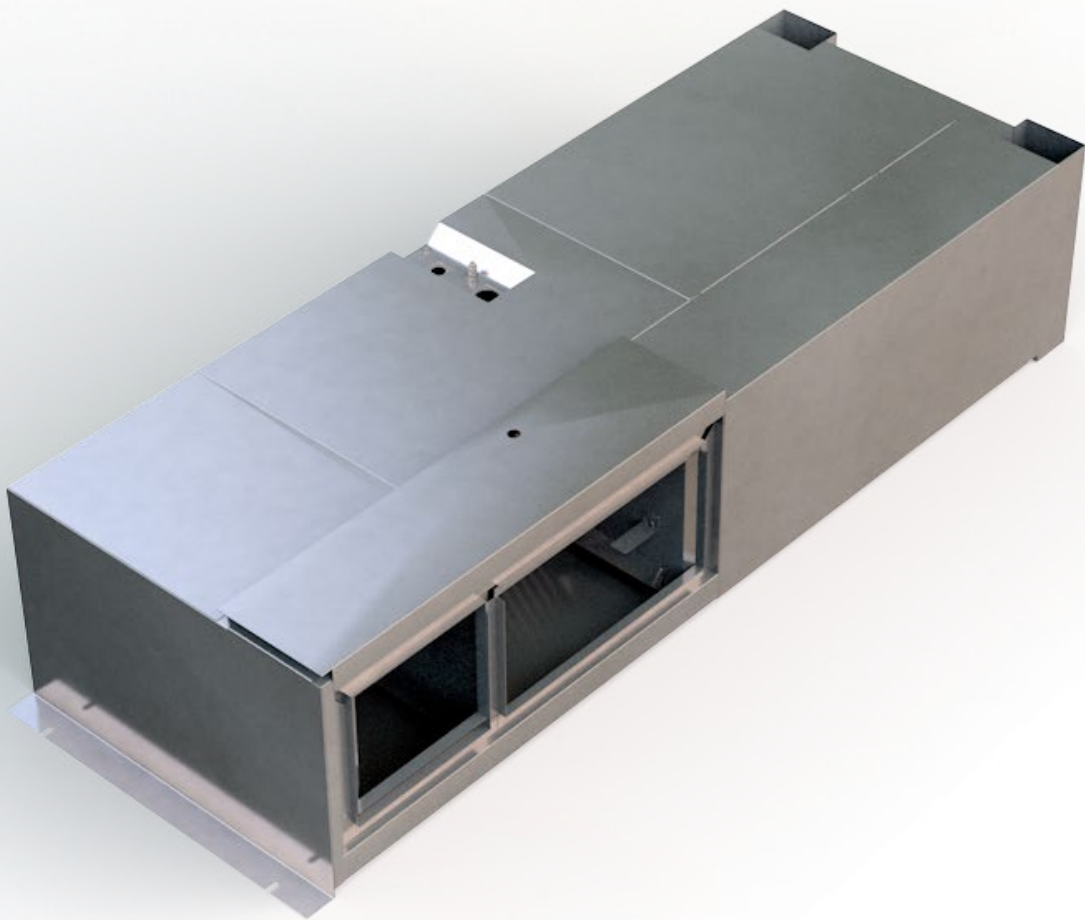


A-VHKA 8-1D/1

Locomotive Sidemount Driver's Cab HVAC

The A-VHKA 8-1D/1 is a special wall mount unit designed by Noske Kaeser Rail & Vehicle New Zealand to flush mount in the main body of the Locomotive immediately behind the driver's cab. These double ended Locomotives haul minerals in Weipa in the extreme North of Queensland Australia. This is a tropical environment.



Technical data

A-VHKA 8-1D/1 Locomotive Sidemount Driver's Cab HVAC

| | |
|---------------------------------------|-------------------------------|
| Customer Platform | Downer (EMD Platform) JT42C |
| City of operation | Weipa, QLD, Australia |
| Cooling capacity | 8,0 kW |
| Heating capacity | 4,0 kW |
| Air Flow | 1440 m ³ /h |
| Length Width Height | 500 mm 800 mm 2260 mm |
| Weight | 314 kg |
| Power supply | 74 Vdc (dedicated inverter) |
| Summer conditions - outside | 40 °C |

