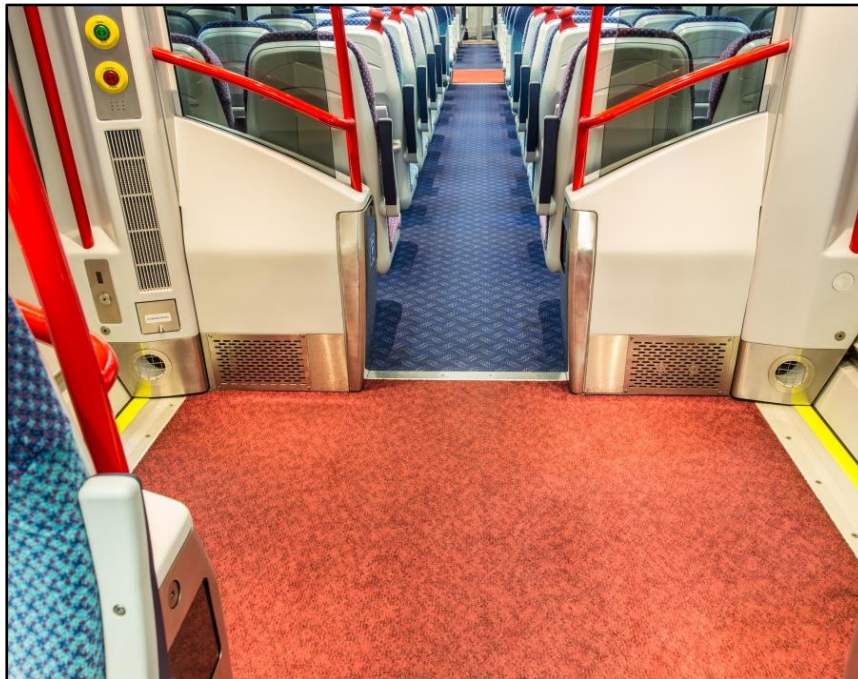




FLOORING SYSTEMS

## **Forbo's floorcoverings roll out for Translink N I Railways**

Translink N I Railways recently upgraded its rolling stock with 20 new Class 4000 trains from CAF in one of its largest ever procurement projects. The new trains entered service throughout 2011 and 2012 boasting a host of interior and exterior design enhancements which have brought the fleet right up to date and substantially improved the customer experience. The installation of design-led high performance floor coverings from Forbo Flooring Systems has helped to create welcoming, comfortable and distinctive interior environments which have been very well received by the operator's growing number of passengers.

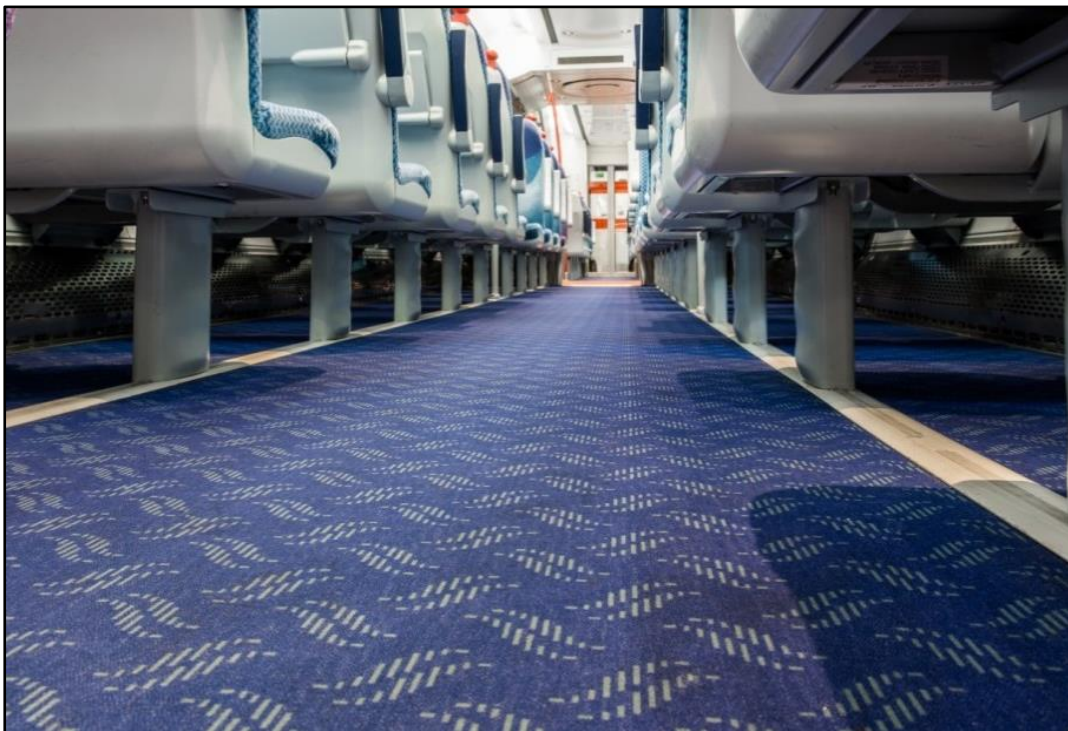


DCA Design International, one of Europe's leading product design and development consultancies, with over 40 years' experience in the passenger transport sector, was commissioned by CAF to re-design the interiors in close co-operation with Translink N I Railways.

Client and design consultancy alike had extensive positive experience of working with Forbo's floor coverings on previous projects which led to the specification of the company's unique electrostatically flocked Flotex floor coverings and flame retardant Coral entrance flooring for saloons and vestibules in the new carriages.

Paul Rutter, Senior Associate at DCA explained why Flotex, a versatile hybrid product combining the benefits of resilient and textile flooring, was specified for saloon interiors:

*"Flotex has a unique set of technical properties which suits our client's type of operation. It provides a very practical surface that can be easily cleaned and stays looking good regardless of the wear and daily use in wet and wintry conditions. Most carpets would be short lived if subjected to this sort of punishment but Flotex thrives on it, whilst offering a level of underfoot comfort that is missing with alternative hard floor products available."*



New Trains Two Programme Manager at Translink N I Railways, James Erwin, concurred: *"We wanted to use textile floor coverings for their warmth and acoustic properties, however, we weren't so keen on the cleaning and maintenance requirements associated with conventional carpeting. Flotex offered the ideal alternative."*

All interior fittings, finishes and floor coverings were to be aligned with Translink N I Railways' new livery and corporate guidelines. As Flotex can be digitally printed with complete flexibility, DCA was able to create a bespoke design to its own colour specifications. *"This enabled us to develop a really cohesive, well balanced interior colour scheme with all elements effectively linked together,"* said Paul Rutter.

Offering a strong visual contrast to the Flotex, Coral Brush Activ FR was installed in vestibules to help prevent wet and dry soiling from being tracked through carriages. By far the most widely chosen vestibule matting in the UK, this textile product is renowned for its supreme durability and its ability to absorb moisture and remove soil effectively in the most heavily trafficked areas. This is achieved with a unique combination of three types of yarn: capillary yarns with a large surface area to help absorb moisture; active yarns to provide scraping actions, and heavy duty yarns to withstand heavy foot traffic.

In Paul Rutter's view, Coral Brush Activ FR scores highly on aesthetics and performance: *"We particularly like the fact that it looks more like carpet than wipe-off entry matting, yet it performs really well. Previously we've specified it for vestibules on Virgin Voyagers (now the Cross Country service) and also as the main floor covering for M6 double deck trains in Belgium, because of its performance and carpet-like appearance. In both cases it was a complete success."*

Forbo's products have also helped Translink N I Railways to comply with the latest European PRM (Persons with Reduced Mobility) standards. *"We've drawn upon Forbo's extensive colour palettes to provide the necessary visual contrasts with fixtures and fittings throughout the carriages,"* said James Erwin. *"From the wide range of standard Coral FR colours available it was easy to find entrance flooring that integrated well with our other interior design products. Flotex is also very different texturally from Coral which provides an additional navigational aid for passengers with restricted vision."*

In conclusion, he said: *"Flotex and Coral are ideal products for passenger transport applications like ours. They're cost effective, affordable, and they work particularly well together. We installed this particular combination of products on our Class 3000 trains back in 2004/2005. Those trains are still in service with the original floor coverings so we know how well they stand up to our punishing cleaning regimes. Nine years on and they still look great."*

*“Our cleaning staff are able to keep our carriage interiors fresh and maintain the Flotex and Coral to a very high standard with a daily clean and more periodic intensive cleaning when required.*

*“Forbo’s floor coverings meet our expectations in terms of durability, maintainability and passenger acceptance and right now we are looking at the possibility of installing Coral Brush on Cross Border trains that we’re refurbishing over the next 28 months. All in all we see our partnership with Forbo Flooring as being very successful.”*

Paul Rutter was keen to point out the importance of effective working relationships where large scale projects are concerned: *“Working with Forbo is always rewarding. It’s not just about the products. It’s also about the help and support that’s available, and the speed of response when timing is critical. Knowing there’s a single point of contact in the company who you can turn to is key”.*

He concluded: *“We’ve specified Forbo products on all of our latest rail interior projects. We believe that the visual quality and technical performance creates a winning combination at a competitive price point. The flexibility to match colour and pattern and tailor unique solutions to suit our interior colour schemes means we can create high quality, practical and visually distinctive flooring solutions that meet every design requirement.”*

---

To find out more about the full range of Forbo’s flooring solutions available to the transport industry please visit [www.forbo-flooring.com/transport](http://www.forbo-flooring.com/transport). Alternatively if you wish for a Forbo Flooring representative to contact you or to send in an enquiry then please email your details to the following address; [info@forbo-transportflooring.com](mailto:info@forbo-transportflooring.com).

For more information and high resolution imagery please contact;

Jemma Masters  
IKAM Marketing Manager  
Forbo Flooring Systems UK Ltd  
High Holborn Road  
Ripley  
Derbyshire  
DE5 3NT  
UK  
Email: [info@forbo-transportflooring.com](mailto:info@forbo-transportflooring.com)  
Tel: +44 (0)1773 744121