

Provision of spare parts

Customised spare parts supply for the railway industry



The 30,000 most common spare parts for rolling stock are just a day away from our customers or their vehicles. Thanks to our central warehouse in Sweden and our strategically located service warehouses, we can quickly and effectively provide the right spare parts, at the right time and the right price.

Efficient, quick and safe spare parts supply for increased availability

When a train breaks down, help is needed to get the vehicle back in operation as quickly as possible. And that's when effective access to the necessary spare parts is absolutely vital. However, maintaining your own stock of spare parts involves capital tie-up and the risk of not having the right material on the shelf. Euromaint Rail offers a spare parts supply service that ensures the right part is in the right place, at the right time and the right price.

Euromaint Rail's spare parts warehouse has more than 80,000 articles for rolling stock. From our central warehouse in Örebro and our strategically located service warehouses around Sweden, we can safely and effectively provide our customers with material.

Euromaint Rail is Europe's largest independent maintenance company for rolling stock. Our purchasing and logistics system is fully adapted to the railway industry. We have access to all the most important manufacturers and subcontractors and have the knowledge and the volumes required for effective purchasing.

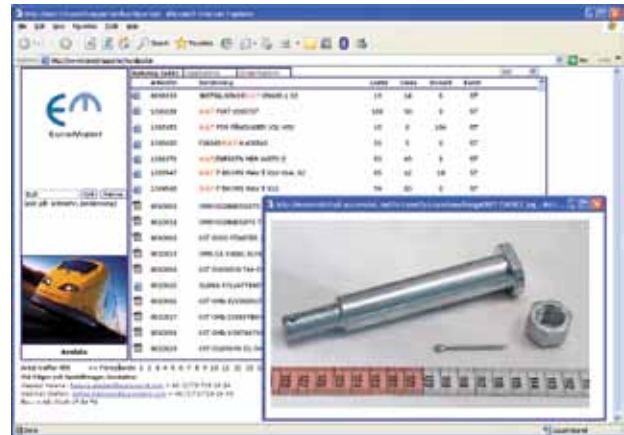
We can deliver the required spare part to the right place in a short time. Our 30,000 most common spare parts can be with the rolling stock within one day of ordering.

Utilising Euromaint Rail's solution for effective spare parts supply means you can reduce or even eliminate costs associated with your own warehouse, so your resources can be used to focus on your core activities.

Knowledgeable personnel and on-call service

Our spare parts supply is managed by knowledgeable and service-focused personnel, often with experience of maintenance work. Euromaint Rail has more than 100 years' experience of maintenance and refurbishment of all types of rolling stock and their components. Our personnel have very good vehicle and product knowledge, as well as an understanding of customer needs. We pick, pack and send standard components immediately and assist our customers with advice and specialist solutions when more unique spare parts are required.

In order to further improve safety and availability of material, you, as a customer of Euromaint Rail, have access to our spare parts on-call service, which operates round the clock, every day of the year.



Spare parts on the web via SparePort

As a spare parts customer of Euromaint Rail, you gain access to SparePort, an internet portal for spare parts. You will find information about access to spare parts, prices and delivery times. Each customer can also view a clear order history, so they can easily find spare parts again among previous orders.

SparePort is encrypted for the sake of security. To access SparePort, you need to be a registered customer of Euroaint Rail and log in using the login details you receive from us.

There are many advantages to being a EuroMaint Rail spare parts customer:

- The right part, in the right place at the right time and the right price
- Reduced capital tie-up
- Efficient purchasing
- A logistics system adapted for the railway industry
- Effective customer service with very good knowledge of the products
- Spare parts on-call service, 24 hours a day, all year round
- SparePort – an internet portal for spare parts

Would you like to know more?

Contact:

Johan Becker

Tel: +46(0)73-719 24 93

E-mail: johan.becker@euromaint.com

Read more about spare parts supply at www.euromaint.com