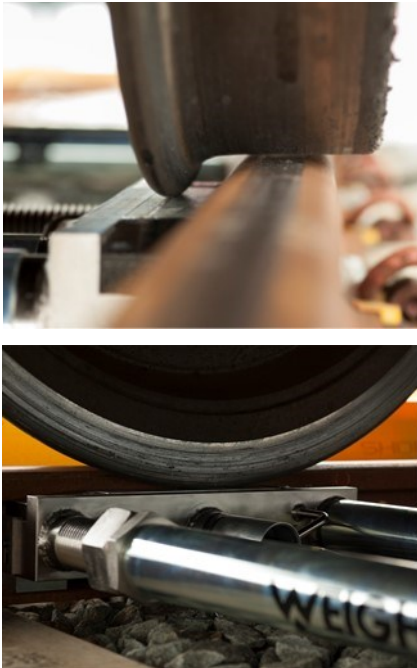


## PTW2 500X



### STATIC, INDIVIDUAL WHEEL WEIGHT, TRAIN WEIGHING SYSTEM

Weighwell Engineering Ltd were the first company to provide portable train weighing systems. Today with over 28 years experience and knowledge we continue to be the industry leaders with 100's of systems worldwide.

The PTW2 500X can be carried by two people to any location and installed quickly. Once installed, the PTW2 500X gives the user the weight data for individual wheels, axles and carriages to establish if weight distribution is even.

The PTW2 500X requires the vehicles to be weighed statically, axle by axle. This method provides excellent accuracy and unrivalled flexibility and due to its portability and ease of installation, the PTW2 500X can weigh on multiple lines or positions.

PTW2 500X is an ideal solution for providing individual wheel weight data for locomotives and passenger cars where an imbalance of weight could cause increased wear to the vehicles, thus highlighting possible issues relating to safety and loading symmetries.

#### KEY BENEFITS OF THE PTW2 500X SYSTEM

- PTW length of 500mm allows for greater flexibility without the need to remove clips or rail fastenings.
- Portable, quick and easy to install.
- Eliminates the need to install expensive weighbridges.
- Saves time and costs.
- Can be used for vehicle modifications and bogie changes.
- Factory pre-calibration eliminates the need for transportation of test weights or calibrated wagons.

The PTW2 500X is an excellent investment in terms of safety, accuracy and potential cost savings and with systems available for hire or purchase, the PTW will satisfy any budget.

## PTW2 500X

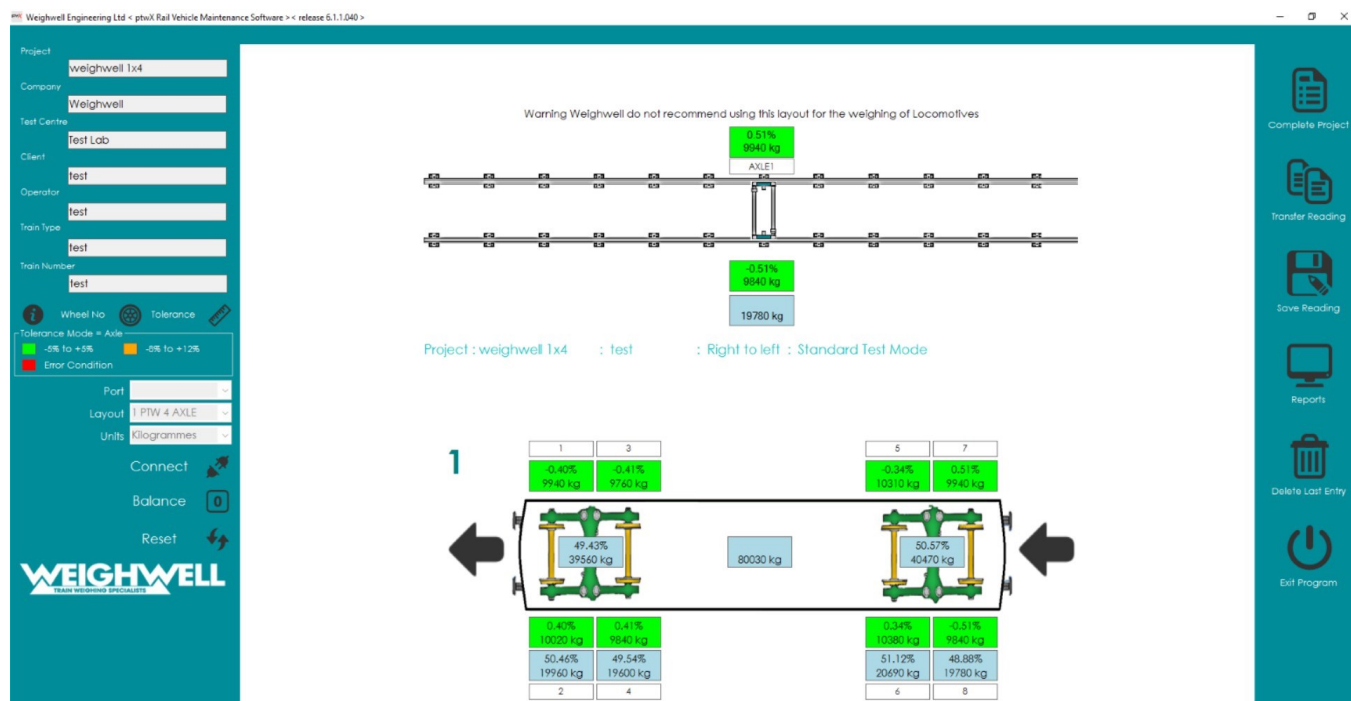
## MAIN KEY FEATURES



Our PTW allows for greater flexibility without the need to remove rail fastenings due to its length of only 500mm. This results in a more convenient installation without the need for expensive or time consuming civil works.

## TECHNICAL DATA

- Length of PTW: 500mm.
- Approximate weight: 34kg (heaviest section).
- Weighing range: 15000kg per wheel (30000kg per axle).
- Increment size: 10kg.
- Materials: High quality tool and mild steels.
- Temperature range: -20°C to +70°C.
- Power supply: 110 - 240VAC / 12VDC.
- Protection class: IP67.
- Mounting: Rail keys to fit most rail types.
- Installation time: 10-15 minutes.
- Accuracy: +/-1% dependent on site conditions.



Primarily designed for manufacturing and maintenance depots that require immediate answers to production problems our ptwX software is easy to use and provides “real time” displays. Our software is a single intuitive solution that provides highly accurate individual wheel weights and has a variety of customisable options such as different report layouts, different wheel numbering and tolerance changes. In addition our software can support bespoke modifications such as alternate languages and meet a variety of DIN standard test procedures.

\*The PTW is not trade approved and specifications subject to change.