

Other Products

Bagged Railway Ballast	57
Sika – Construction Chemicals	58
Fosroc – Construction Chemicals	60
Ultracrete – Road Repair	64



Bagged Railway Ballast

Railway ballast is unbound coarse aggregate used to form the foundation of a railway track. The aggregates used in railway ballast are selected to be very hard and durable. The BS EN Standard specifies two sizes - 31.5/50mm size and 31.5/63mm size.

Full details are given in Standard: BS EN 13450, Aggregates for railway ballast. BS Guidance: PD6682-8 Network Rail publishes a specification for track ballast that details the requirements routinely used in the UK - 31.5/50mm size is generally used.



The information in this brochure is to the best of our knowledge true and accurate, but all recommendations or suggestions are made without guarantee. Since the conditions of use are beyond their control, Keyline disclaim any liability for loss or damage suffered from the use of these data or suggestions. Furthermore no liability is accepted if use of any product in accordance with these data or suggestions infringes any patent. Keyline Rail reserve the right to change product specifications without further notification.



Product	Sika MonoTop 615	Sika Rapid Repair Mortar
Keyline Code	520686	520683
Manufacturer	Sika	Sika
Colour	Grey	Grey
Description	Concrete Repair and Reprofiling Mortar	Fast Setting Repair Mortar with High Early Strength Gain
Application	For interior and exterior use, easy to mix – just add water. Suitable for overhead & vertical repairs. May be trowel or spray applied.	Excellent adhesion, fast and easy to apply & only requires mixing with water.
Pack Size	25kg	25kg

Sika Bedding Mortars



Product	SikaSet 45	Sika FastFix-M60
Keyline Code	539426	714181
Manufacturer	Sika	Sika
Colour	Grey	Grey
Description	Rapid Hardening Repair and Bedding Mortar	Manhole Bedding Mortar
Application	High early strength gain: traffickable in 1 hour. Shrinkage compensated and can be used at low temperatures.	Rapid setting for the fast installation of street ironwork. Only requires mixing with water. Rapid strength gain: traffickable in 1 hour. Fast and easy to apply.
Pack Size	25kg	25kg

Sika Grouts and Anchors



Product	Sika Grout 212	Sika AnchorFix-1	Intraplast
Keyline Code	520684	508805	539428
Manufacturer	Sika	Sika	Sika
Colour	Grey	Grey	Grey
Description	Flowable Cementitious Grout	Chemical Anchoring Adhesive	For Use in Sand/Cement Grouts
Application	For filling, levelling and grouting of machine bases, bearing plates and steel fixings.	For fixing bolts, ties and fittings into concrete, bricks and blocks. Fast curing even at low temperatures and is applied using a standard sealant gun.	Expanding admixture to compensate for shrinkage. Plasticising to improve strength and durability. Improved fluidity and handling.
Pack Size	25kg	300ml	10kg



Product	Sikafloor CureHard 24
Keyline Code	539423
Manufacturer	Sika
Colour	Clear
Description	Transparent surface hardener, dustproof, sealing and curing compound for concrete
Application	One part, clear liquid to cure, harden and seal finish for hardened concrete
Pack Size	25ltr
Usage Approx	10m ² /ltr

Waterproofing

Sika 1 mortars are pre-batched kiln dried blends of specially graded aggregates and cements packaged in 4 grades at the appropriate mix ratios for optimum application performance and durability. When mixed with the diluted Sika 1 waterproofer liquid they provide the multi-coat components for the structural waterproofing and waterproof render systems.



Product	Sika 1 Spritz and Bonding Coat Mortar	Sika 1 Render Mortar	Sika 1 Finishing Mortar	Screeding Mortar
Keyline Code	504360	504361	504362	–
Manufacturer	Sika	Sika	Sika	Sika
Packaging Colour	Red Stripe	Brown Stripe	Green Stripe	Blue Stripe
Description	Pre-batched Mortar	Pre-batched Mortar	Pre-batched Mortar	Pre-batched Mortar
Pack Size	25kg	25kg	25kg	25kg

Sika Sealants and Adhesives

Product	Sikaflex PRO 2HP	Sikaflex Construction	Sikaflex PRO 3WF	Sikaflex EBT
Keyline Code	994383 – Black, 600ml 994384 – Black, 310ml 994385 – Dark Grey, 600ml 994386 – Light Grey, 310ml 994398 – White, 600ml 994410 – White, 310ml	229514 – Grey, 310ml 229515 – White, 310ml 229516 – Grey, 600ml	994412 – Concrete Grey, 600ml	685068 – Beige, 310ml 685069 – Black, 310ml 685070 – Brown, 310ml 685071 – Grey, 310ml 685072 – White, 310ml
Manufacturer	Sika	Sika	Sika	Sika
Colour	White, Grey, Dark Grey and Black	Grey and White	Concrete Grey and Grey	Beige, Black, Brown, Grey and White
Description	Expansion Joint Sealant	Expansion Joint Sealant	Expansion Joint Sealant for Floors	Elastic Bonding Adhesive, Sealant & Filler
Application	High performance one part, gun grade, polyurethane – permanently elastic and extremely adhesive.	General purpose one part polyurethane, gun grade – permanently elastic.	High performance and abrasion resistant, one part, gun grade, polyurethane – permanently elastic and extremely durable.	Typical use weather resistant, high grab & multi-purpose.



Product	Nitomortar PE	Patchroc GP	Renderoc GP	Renderoc HB
Keyline Code	912141	911761	911463	911518
Manufacturer	Fosroc	Fosroc	Fosroc	Fosroc
Type	Polyester Resin	Cementitious	Cementitious	Cementitious
Application	High strength jointing - fast setting.	Patching mortar - fast setting.	General purpose concrete reinstatement mortar.	High build reinstatement mortar.
Application Examples	Bedding and fixing kerbstones, brick slips, manhole sets, infill holes in concrete floors.	Emergency reinstatement of patches in concrete - airport aprons, access ramps, warehouse floors.	Use as render as well as all types of patch repairs.	Vertical and overhead repairs.
Pack Size	14kg	25kg	25kg	18kg
Usage Approx	7.5ltr/14kg	1m ² @ 12mm	1.6m ² @ 10mm	1.6m ² @ 10mm
Primer	No primer required	Nitobond AR/Nitobend EP	Nitobond HAR	Nitobond HAR

Fosroc Grouts and Anchors



Product	Conbextra GP	Conbextra HF	Conbextra EPR	Cebex 100	Lokfix S25
Keyline Code	915379	915406	915558	915901	533198
Manufacturer	Fosroc	Fosroc	Fosroc	Fosroc	Fosroc
Type	Cementitious	Cementitious	Epoxy Resin	Powder	Polyester resin pourable grade
Application	General purpose non-shrink grout for gap thickness 10-75mm.	Free flowing, non-shrink grout for gap thicknesses 10-100mm.	Free-flow grout-thickness 10-120mm.	Shrinkage compensating admixture.	Two part grout for use where hole is 8-40mm greater in diameter than bar.
Application Examples	Flowable: bolt pockets, void filling and stanchion base plates. Trowellable: for bedding loadbearing components.	Large stanchion base plates, pre-cast panel joints and pumped grouting.	Grout for heavy dynamic or mobile loads.	Bed grouting, duct grouting, non shrink infilling and jointing.	Anchoring of bolts and bars 12-50mm in diameter into concrete, rock, masonry and brickwork.
Pack Size	25kg	25kg	8 & 16ltr packs	24 x 0.225kg	2.5ltr packs
Usage Approx	Trowelled 12ltr, Fluid 13.25/25kg	13.25ltr/25kg	1.6m ² @ 10mm 0.8m ² @ 10mm	225g/50kg OPC	Dependent upon bolt size and hole diameter

Fosroc – Construction Chemicals

Fosroc Sealants and Adhesives



Product	Nitoseal MS300	Nitoseal MS60	Colpor 200PF	Thioflex 600 Gun Grade
Keyline Code	982495	Various	911468	982495
Manufacturer	Fosroc	Fosroc	Fosroc	Fosroc
Type	MS polymer	MS polymer	Cold applied	Polysulphide
Application	Seal floor joints in trafficked areas marble, stone.	Seal joints in general building applications.	Seal joints in concrete roads/runways/hardstanding.	Seal movement joint in building & civil eng. structure.
Application Examples	Factory floors, stadia.	Brickwork, concrete, and cargo areas.	Garage forecourt, parking basements.	High rise, retaining walls, subways, basements.
Grade	Gun	Gun	Pour	Gun
Joint Min/Max	6-30mm	5-35mm	30mm max	5 - 50mm
Pack Size	600ml	380ml	2 x 5ltr packs	2.5ltr pack
Pack Composition	One Part	One Part	Base/Curing	Base/Curing
Colours	Grey	9 Colours	Black	Grey
Tools	GX Sachet Gun	Skeleton Gun	G Gun	G Gun/Follower/Paddle
Fosroc Primer	MS2	No20 - conc/timber	No7 - brick/stone/conc	
Primer Usage	0.75ltr/90m joint	None	1ltr/20ltr Colpor	1ltr/30ltr Thioflex

Site Start Up	Geotechnics	Manhole Solutions	Concrete Pipe and Culvert	Clay Drainage
Plastic Drainage	Surface Water Drainage	Flexible Couplings	Stormwater Management	Rainwater Harvesting
Off Mains Drainage and Separators	PE and Barrier Pipe Systems	Cable Protection and Access Boxes	Reinforcement and Ground Movement	Damp Proof and Barrier Membranes
Specialist Chemicals	Hard Landscaping - Flag and Kerb	Linear Channel Drainage	Access Covers and Gully Gratings	Street Furniture

Download a copy of our **Civils and Drainage Guide** at www.keyline.co.uk





TUNNELLING

- Cut and cover
- Drill and blast
- Tunnel boring machines



CAR PARKS & TRANSPORT LINKS

- Concrete repair & coatings solutions
- Above ground precast concrete structures
- Multiple decking
- Flat roofs
- Roadway & pavement repairs



BRIDGES

- Below ground solutions
- Bridge decking
- Concrete structural remediation
- Bearings pads
- Joint sealing segment structures



UNDERGROUND CONCRETE STRUCTURES

- Waterproofing solutions
- Concrete repair & coatings solutions
- Joint sealing



STATIONS, TERMINALS, DEPOTS & SUBSTATIONS

- Waterproofing solutions
- Concrete repair & coatings solutions
- Joint sealants
- Above ground precast concrete
- Floor slabs
- Compounds & surface coatings
- Flat roofs
- Platform repairs and iron works fixing



CRANE & RAIL FIXING

- Crane & train rail pads
- Grouting rail base plates
- Gantry anchors

Product	Concure WB
Keyline Code	218177
Manufacturer	Fosroc
Application	Spray applied membrane retains moisture for effective curing

Application Examples	Large area concrete surfaces - airport runways, roads, bridgeworks
Pack Size	20ltr
Usage Approx	3.5-5m ² /ltr

Ultracrete – Road Repair

Highway Reinstatement Materials



Keyline offers this range of proven, trusted and durable reinstatement materials – highway maintenance products that have been developed with 30+ years of experience and are all independently tested and certified. Recommended for the reinstatement of ductile and composite covers and grates.

Product	M60	Envirobed HA104®	M90	QC10 F
Keyline code	968799	543468	924153	966859
Type	Fast Set Rapid Strength Mortar	High Performance Bedding Mortar	All-Purpose Fast Set Mortar	Rapid Set Flowable Concrete
Spray				
Application	Rapid bedding of all BS EN124 manhole covers & frames. Also for bedding kerbs. Part of the HAPAS Approved System.	Fast bedding of all manhole/ access covers. Exceeds HA104 requirements, all the strengths of a resin mortar. Part of the HAPAS Approved System.	Bedding access covers, and general repairs.	Carriageway ironwork/ composite backfill to create a solid restraining course. For thick section concrete repairs and heavy duty post installation. Part of the HAPAS Approved System.
HAPAS Logo to be attached to this product?	YES	YES	NO	YES
Depths	10-75mm	10-50mm	10-75mm	30-250mm
Compressive Strength	22N/mm ² within 1 Hour	51N/mm ² in 3 Hours	21N/mm ² in 2 Hours	20N/mm ² after 90 Mins
Tensile Strength	5.24N/mm ² at 28 Days	5.8N/mm ² in 3 Hours	3.51N/mm ² at 28 Days	3N/mm ² at 28 Days
Workability	5-10 Mins	15 Mins	5-10 Mins	5-10 Mins
Set Time	20 Mins	30 Mins	20 Mins	10-20 Mins
Pack Size	25kg Bag / Tub	20kg Bag & 2.5ltr Unit	25kg Bag / Tub	25kg Poly Bag / Tub



Product	SCJ	Instant Road Repair	Instaband ECO	Permanent Pothole Repair
Keyline code	623714	990877	966873	550284
Type	Cold Joint Sealer & Tack Coat	Cold Lay Asphalt Concrete (macadam)	Thermoplastic Overbanding Tape (macadam)	Cold Lay Asphalt Concrete
Application	Applied to vertical edges and surface base before application of asphalt to increase material bond and prevent water ingress instantly. Part of the HAPAS Approved System.	For 1st time permanent surfacing of reinstatements. Available in 6mm & 10mm grades. For footways, footpaths, cycle tracks, types 3 & 4 carriageways. High PSV of 60. Part of the HAPAS Approved System.	Skid resistant overbanding for application to asphalt roads to prevent water ingress and progressive fretting. High skid resistance value of 60 SRV. HAPAS Approved.	For the repair of potholes in roads, driveways, and car parks etc. Fully HAPAS Approved, the first of its kind. Use in all weathers.
HAPAS Logo to be attached to this product?	YES	YES	YES	YES
Depths	-	-	-	
Compressive Strength	-	-	-	
Tensile Strength	-	-	-	
Workability	-	-	-	
Set Time	-	-	-	
Pack Size	750ml Aerosol, Box of 12	25kg Poly Bag / Tub	5m x 35mm Roll, Box of 10	25kg Tub

Did you know?

We're Big on Street Furniture

Cycle Storage



Shelters



Bollards



Seating



Litter Bins

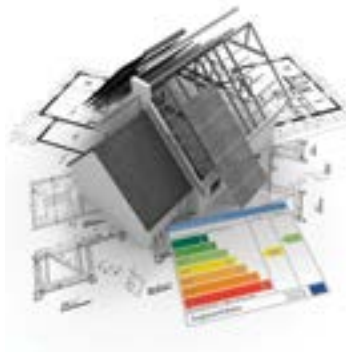


See our
Street Furniture
Guide for more
information





SUSTAINABLE BUILDING SOLUTIONS



Sustainable Building Solutions (SBS) is a specialist division of the Travis Perkins Group established in 2010 to provide help, support and expert technical assistance to the construction industry.

SBS offers an Integrated Approach to providing solutions for your Energy Efficient Building and Renewable Energy projects. We provide the products, technical advice, specifications, services and training to enable you to complete any Sustainability project.

Sustainable Solutions

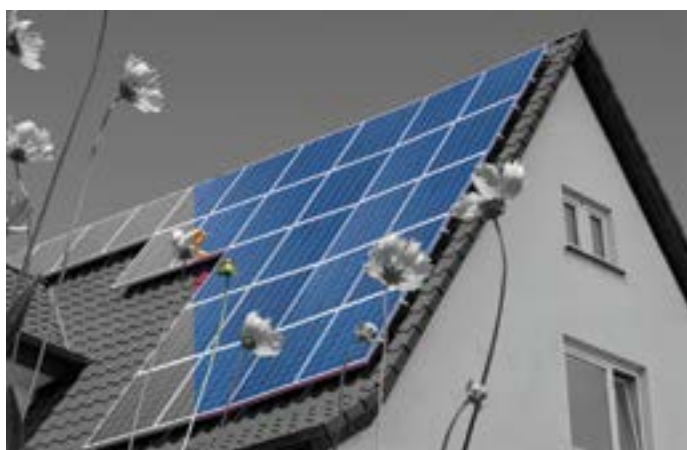
- We offer New-build and Retrofit energy efficient and compliant solutions
- We have over 40 solution specification sheets on our website for projects from Landscaping to Ground Source Heat Pumps, and from Rainwater Harvesting to Party Walls.

Sustainable Products

We are embracing the changing needs of the markets by providing a range of technologies and products designed to help reduce the impact on the environment. Within this brochure there are:

- Durakerb (See page 54)
- Permeable Paving (see page 55).

We provide a broad range of products from Build Fabric to Water Management, from Eco Materials to Renewable Technologies.



Sustainable Services

Assessments & Certification

A simple one-stop-shop for developers and contractors in meeting the wide range of statutory obligations and new regulations.

Services can be ordered individually, or in groups or expands to a full consultancy service.

- Environment Assessment – Flood & Ecology



Flood: Any new developments need to consider flood vulnerability. Flood Risk Assessments (FRA) are required when a planning application is submitted. Through our partners, SBS can offer Flood Risk Assessment Services.

Ecology: Planners have a duty of care to promote and enhance biodiversity. They also need to ensure that any development complies with National and European wildlife and habitable legislation. If your development requires an Ecology and Protected Species assessment, SBS can provide this through our partners.

Site Survey & Testing

Tailoring a solution that properly takes account of ground conditions and site constraints will provide long-term efficiencies and help to provide unnecessary expense and time delays.

- Sustainable Drainable Survey & Design:

Sustainable Drainage is an environmentally friendly way of dealing with surface water runoff. SBS has partnered with Geo Environmental Sciences Limited (GESL) to provide a complete Sustainable Drainage Design Service.

SBS Helpline

Our free phone line provides help and advice on all aspects of your build, whether you need further advice on regulations and good practice, information on Water & Sustainable Drainage System (SUDS), Construction Waste or Sustainable materials we are there to help.

For more information:

Technical Helpline: **0800 688 8388**

Email: **helpline@tpsbs.co.uk**

Website: **www.sustainablebuildingsolutions.co.uk**

Keyline Branches across the UK



- | | |
|------------------------|---------------------|
| ABERDEEN | LOWTON |
| ALFORD | MILTON KEYNES |
| ASHFORD | MONTROSE |
| ATHERTON | MORLEY |
| AYR | NELSON |
| BANBURY | NEWCASTLE UPON TYNE |
| BASINGSTOKE | NEWPORT |
| BEDFORD | NEWTON ABBOT |
| BIRTLEY | NORTHAMPTON |
| BLACKPOOL | NORTHFLEET |
| BLAIRGOWRIE | NORWICH NORTH |
| BRADFORD | NORWICH SOUTH |
| BRAINTREE | NOTTINGHAM |
| BRIDLINGTON | OBAN |
| BRISTOL | OLDHAM |
| BROXBURN | PERTH |
| CANNING TOWN | PETERBOROUGH |
| CARDIFF | PLYMPTON |
| CASTLE DOUGLAS | POOLE |
| COLCHESTER | PRESTON |
| COWBRIDGE | READING |
| CROSS HANDS | ROWLANDS CASTLE |
| DINGWALL | SCUNTHORPE |
| DONCASTER | SHEFFIELD |
| DUMFRIES | SOUTHAMPTON |
| DUNDEE | ST BOSWELLS |
| DUNFERMLINE | STIRLING |
| EDINBURGH | STOKE |
| ELGIN | STRATFORD |
| EXETER | SWANSEA |
| FALKIRK | SWINDON |
| GLASGOW SALKELD STREET | TAIN |
| GLASGOW SOUTH STREET | TAUNTON |
| GRANTOWN-ON-SPEY | TREFOREST |
| GREENOCK | TRURO |
| KIRKCALDY | WATH |
| KIRKHAM | WILLESDEN |
| LANCASTER | WISHAW |
| LEEDS | YORK |
| LOCHGILPHEAD | |

National Sales Offices

- BIRMINGHAM
- BRISTOL
- EAST ANGLIA
- GLASGOW
- LEEDS
- READING

Keyline supplies the widest range of heavy building materials, civils and drainage solutions to the UK construction industry.

Contact the Keyline National Rail Office on 0844 892 2677 or email rail@keyline.co.uk