

# TEXELIS

Texelis has unrivalled experience of the rail industry with many of its axles still in service after 30 years. At the core of our business is attention to quality from initial design, through production and testing to full after sales maintenance and support.

- Low life cycle costs
- Innovative in-house design, engineering, production and testing facilities
- RIS, ISO 9001 and ISO 14001 compliant

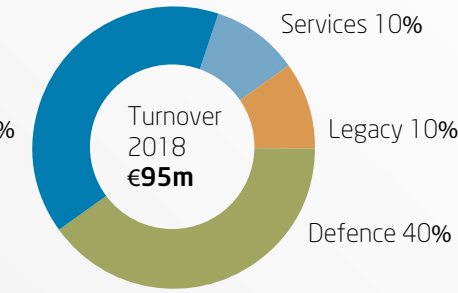
At the heart of our business is a deep commitment to long term support

- Full MRO including maintenance, repair and overhaul including spare parts availability for over 30 years
- Upgrade and re-engineering
- In-service preventative maintenance
- Training
- Obsolescence management



# TEXELIS

Rail 40%



## Texelis at a glance



|                      |                                |
|----------------------|--------------------------------|
| 4                    | Assembly units                 |
| 10                   | Dedicated test benches         |
| 11                   | Heat & surface treatment units |
| 12                   | Test benches                   |
| 330                  | Permanent staff                |
| 35,000m <sup>2</sup> | Facility                       |

## Dealers



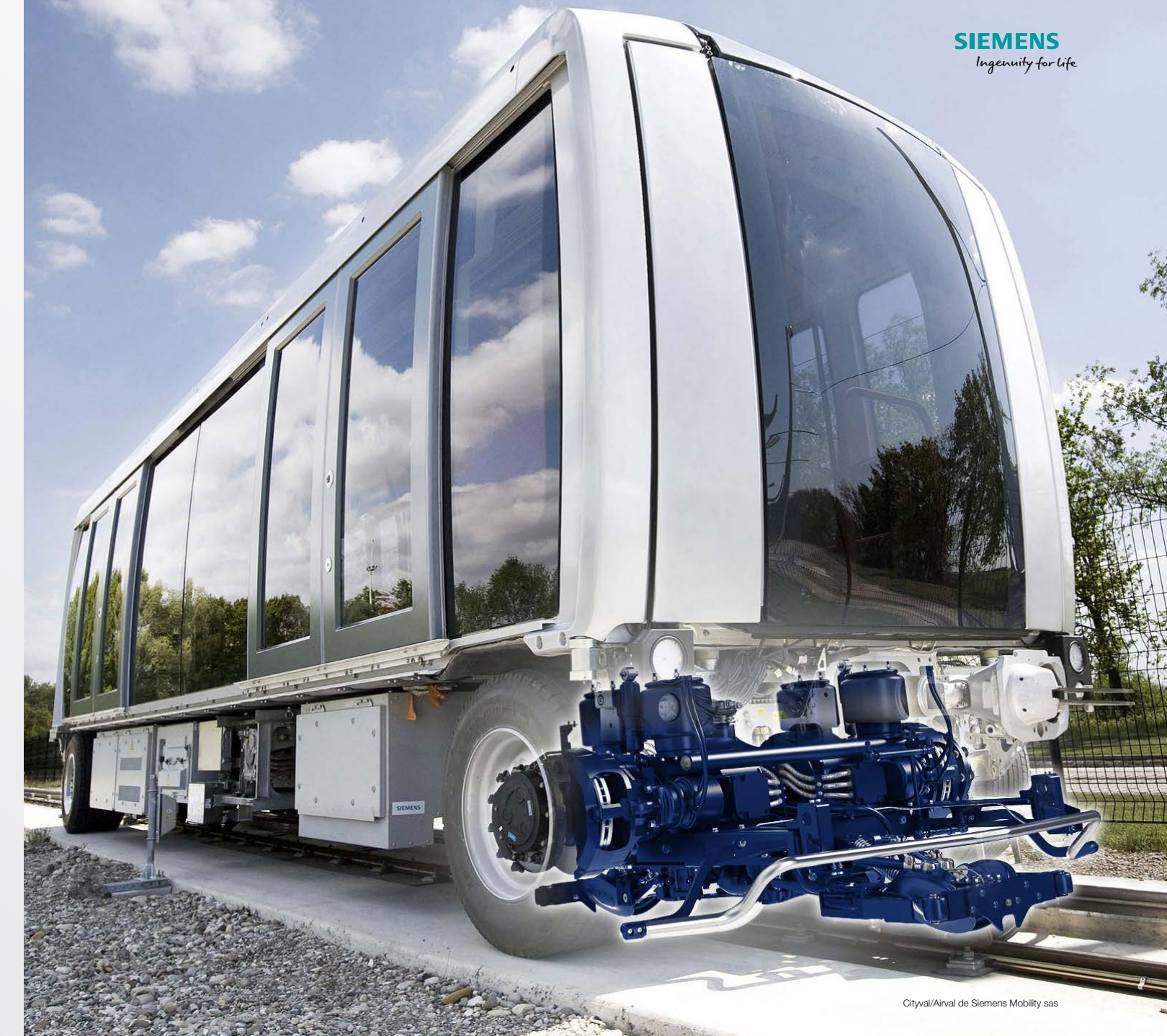
# TEXELIS

72, route du Palais, CS 60538 - 87011 Limoges cedex 1, France  
Tel.: +33 (0)5 55 11 70 00 business@texelis.com www.texelis.com



# TEXELIS

## RAIL TRANSPORT SYSTEMS



**SIEMENS**  
Ingenuity for Life

Cityval/Airval de Siemens Mobility sas



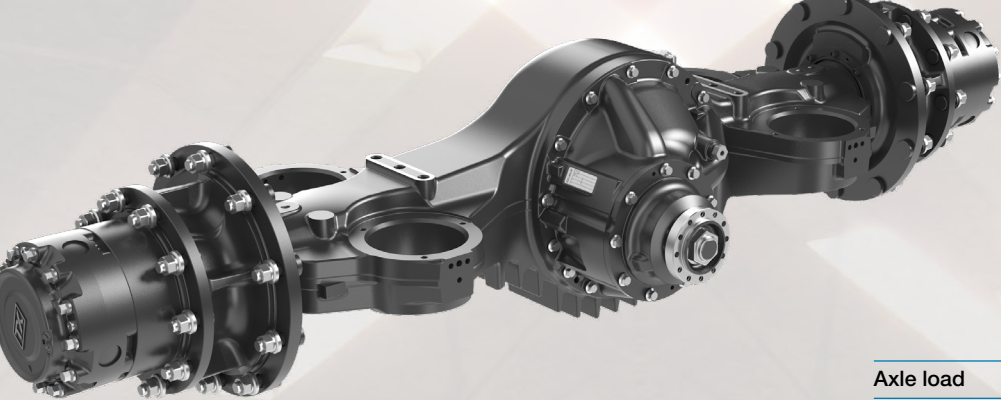
# Rail applications

Texelis designs and manufactures high-performance axles and powertrains for use in rail transport system including APM, metro and trams, focusing on gear quality, safety and reliability to meet the needs of the largest OEMs.

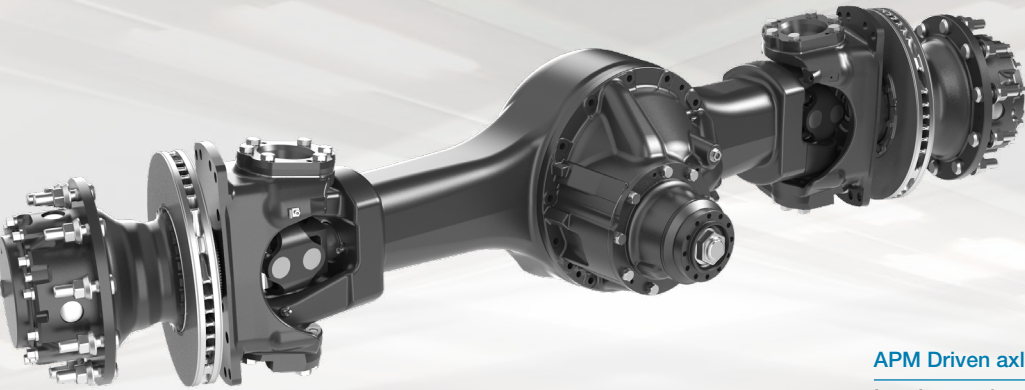


# Proven solutions

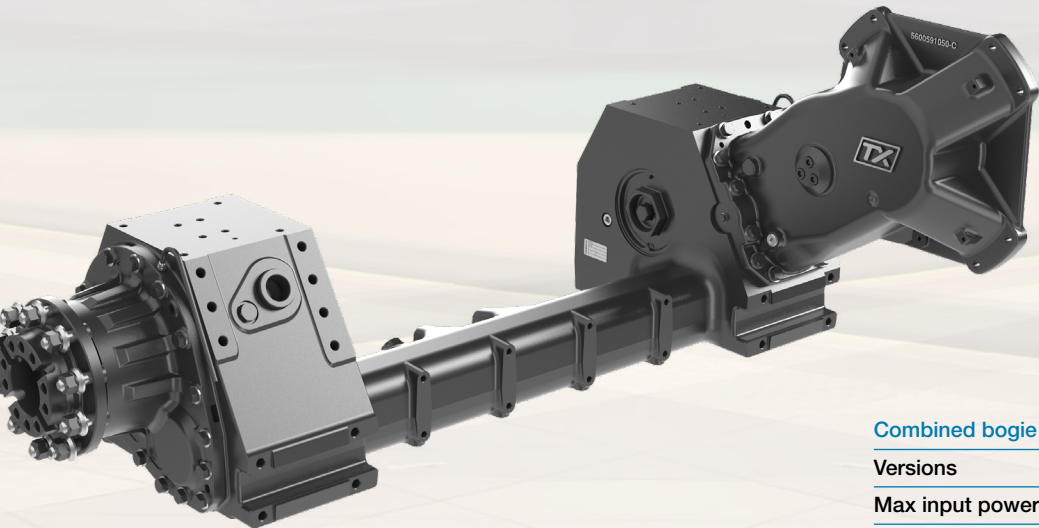
Texelis has supplied more than 10,000 axles, more than 5500 gearboxes and bogies or major bogie components to leading global rolling stock manufacturers including Siemens, Alstom, Bombardier and CAF.



|             |                   |
|-------------|-------------------|
| Axle load   | more than 10 tons |
| Axle weight | less than 800 kg  |
| Max power   | 150 kW            |



|                 |                   |
|-----------------|-------------------|
| APM Driven axle |                   |
| Load capacity   | less than 14 tons |



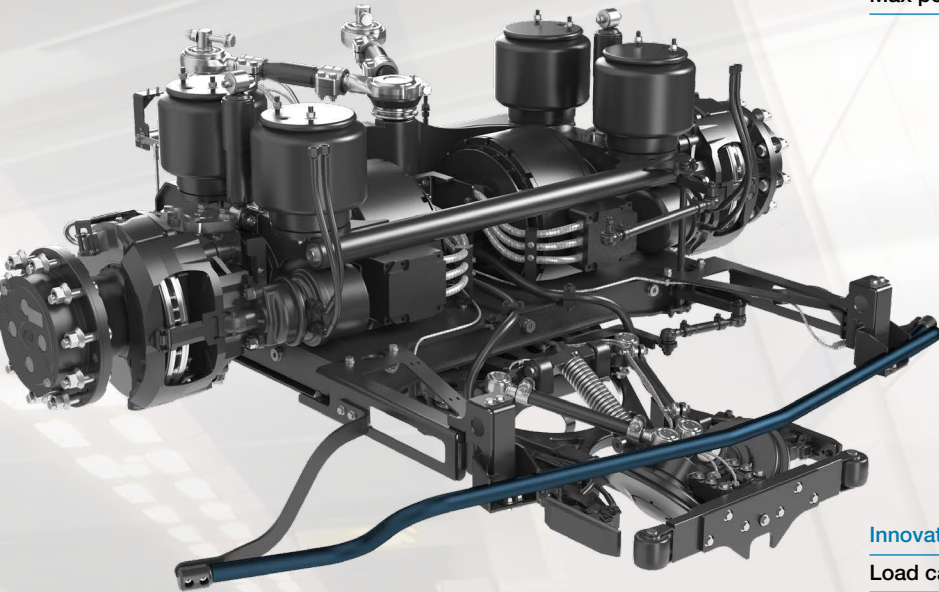
|                                      |                     |
|--------------------------------------|---------------------|
| Combined bogie structure and gearbox |                     |
| Versions                             | from 11 – 12.5 tons |
| Max input power                      | 10,000 Nm           |

# New generation

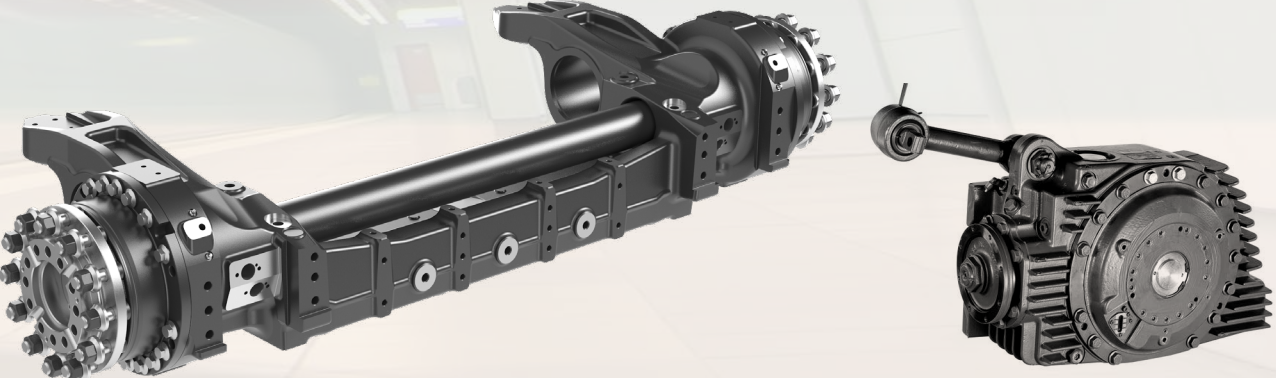
Texelis’ experience, associated with the feedback of operators and end users help Texelis to continuously improve its developments and designs of new products in the railway industry. Texelis now designs and supplies full bogie systems incorporating the very latest technologies.



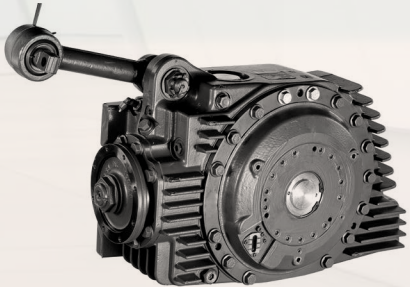
|             |                   |
|-------------|-------------------|
| Axle load   | more than 12 tons |
| Axle weight | less than 800 kg  |
| Max power   | 450 kW +          |



|                                    |                   |
|------------------------------------|-------------------|
| Innovative single guide rail bogie |                   |
| Load capacity                      | more than 14 tons |



|                                       |                  |
|---------------------------------------|------------------|
| Low floor structural axle and gearbox |                  |
| Axle weight                           | less than 700 kg |



|                      |                                     |
|----------------------|-------------------------------------|
| Single stage gearbox |                                     |
| Weight               | less than 400 kg<br>Fully suspended |