

ENERGY

WE ENERGIZE
THE WORLD

TENSOREX C+

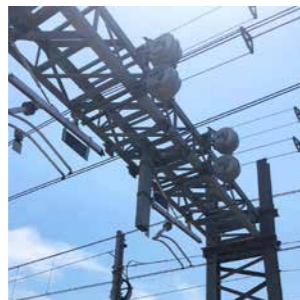
PATENTED SPRING
TENSIONING SYSTEM



IN FAVOUR OF TENSOREX C+

PRECISE, COMPACT AND
EASY TO INSTALL

**TENSOREX C+
is significantly more
compact than conventional
tensioning devices, and can
be fitted in about an hour.**



Modern railway tracks place extremely high demands on their tensioning systems.

High-speed lines with numerous tunnels need tensioning devices that can be easily integrated into the tunnel geometry. There is a growing trend for urban transport systems to be aesthetically designed, requiring tensioning devices that blend inconspicuously into their environment. The overhead contact lines of railways are exposed to a variation in temperature – both from the day/night cycle and in the course of seasonal changes.

TENSOREX C+ by Mosdorfer Rail is an innovative solution on both types of application.

TENSOREX C+ is a spring based tensioning system for overhead lines on electric railways and tramways. It ensures that cables and wires remain at a constant height under tension. The necessary tensioning force is generated by the patented interaction between a spiral spring and a cam/pulley with variable radius – concrete and steel weights are not needed.

TENSOREX C+ is a maintenance free, economic system. Fast and easy installation – in about an hour – means lower personnel expenses and requires no additional expertise. This significantly reduces installation costs in comparison with conventional solutions.

How it works



By means of a support cable, TENSOREX C+ exerts a constant tension on the contact wire, regardless of any changes in force due to temperature. The special spiral spring is firmly connected to a shaft which are firmly connected both cams/pulleys.

The degree of rotation of the shaft results in a linear variable torque/moment, which is compensated for by the combination with the variable radius of the cam. This produces a constant pulling force over the entire pulley device working range.

Benefits

- More compact and lighter than wheel tensioning systems
- High precision of response
- High level of safety
- Easy installation – lower installation costs
- Practically maintenance-free
- Virtually immune to vandalism
- Product training and familiarisation is available with Mosdorfer Rail
- There is a fixing bracket which Mosdorfer produces to support the Tensorex C+ installation.

TENSOREX C+ facts

- Units sold: 35,000+ (Asia, Africa, Australia, Europe, North and South America)
- Compensating capability: 450–1500 mm
- Pulling force: 7.5–40 kN

RAIL WAY

ENERGY

WE ENERGIZE
THE WORLD

05-2025

Mosdorfer Upresa Rail S.A.U.
C/Empordà 7, Polígono Industrial Congost
08403 Granollers, Spain
Phone +34 938 40 03 65
mosdorfer.upresa@mosdorfer.com

Mosdorfer Rail Ltd.
2–4 Orgreave Place, Orgreave, Sheffield S13 9LU, UK
Phone +44 114 38 78 370
ordersrailuk@mosdorfer.com

Mosdorfer Rail S.r.l.
Via Achille Grandi 46, 20017 Rho (MI), Italy
Phone +39 02 64 08 81 42
inforail.it@mosdorfer.com