

Mechan

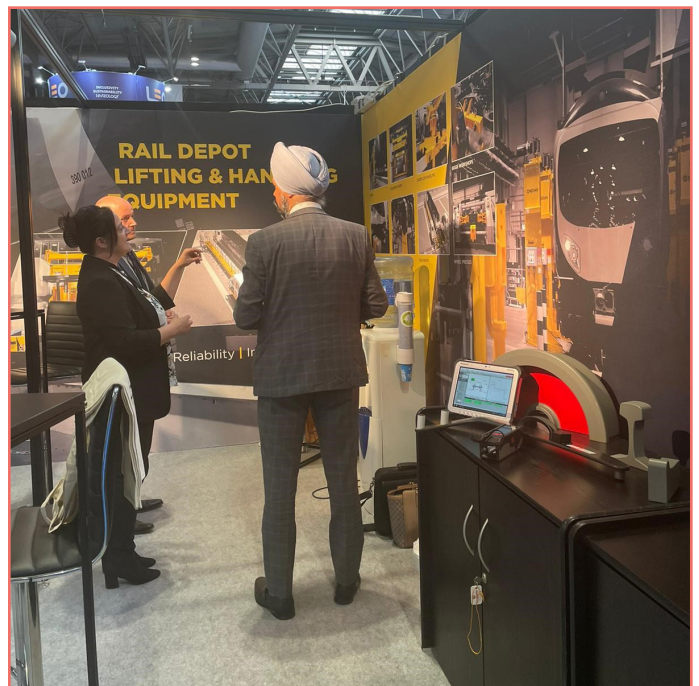
Strength in Group Collaborations

Rail depot equipment specialists, Mechan, will be returning to this year's InnoTrans exhibition.

Situated in a new home this year, the British manufacturers will be joining forces with their parent and sister companies in **Hall 4.2 Stand 110**.

The Sheffield-based railway equipment experts will be exhibiting in Berlin, from 24–27 September, showcasing the group's capabilities.

Lindsey Mills, Mechan's Sales Director, said: *"We are excited to be mixing things up a bit this year. Joining our parent and sister companies on our ultimate parent company – John Cockerill's – stand gives us the opportunity to promote all businesses within the group together for the first time. We are regularly combining resources within our group, working together on large construction projects, therefore it will be a great opportunity to show our customers how we can do this for them. Make sure you head to our new location for this year, **Hall 4.2 Stand 110**."*



Meeting with the Shadow Rail Minister at Railtex in 2019

Technological Solutions

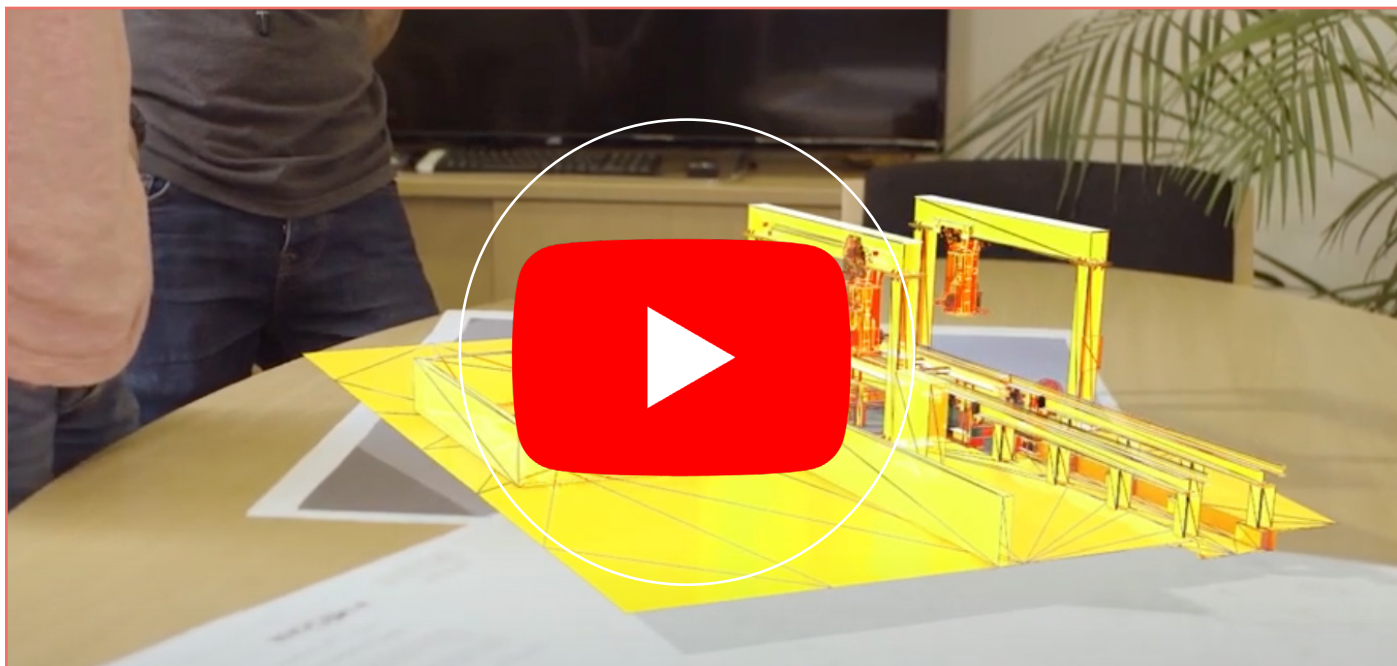
Founded in 1817 by the innovative entrepreneur John Cockerill, Mechan's ultimate parent company John Cockerill Group develops large-scale technological solutions – facilitating access to low carbon energies, enabling sustainable industrial production, preserving natural resources, contributing to greener mobility, enhancing security and installing critical infrastructures.

International Players in the Railway Sector

Joining forces with the internationally renowned CIM



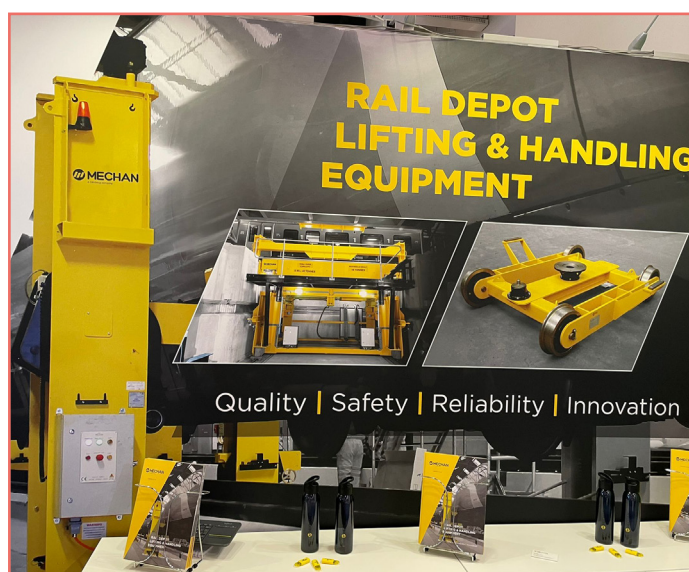
Find out more about our parent company, John Cockerill's



Group in 2017 pushed Mechan to the next level. Helping to reach untouched markets spread across different continents, CIM's reputation lived up to expectations, and more. Structured around three core business lines within the railway industry, Mechan and CIM have been the perfect fit.

Railway Expertise

Complimentary sister companies SEG (Sogema Engineering Group), and LAF (Les Appareils Ferroviaires) boosts Mechan's product range. Specialising in wheel lathes, wheel presses and automatic couplers, their commitment to quality aligns with Mechan's focus on quality and reliability.



Mechan exhibition stand

Simulation Solutions

For those who visited us at InnoTrans back in 2018, you may have had the opportunity to experience Transurb's nano simulator. The tailor-made portable simulator is the ideal solution for theory and procedural learning. Continuously evolving as technology develops, Transurb provides their advanced simulation solutions worldwide.

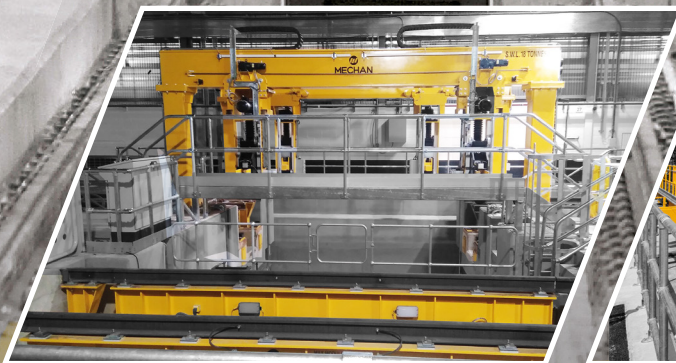
Mechan's team, including Lindsey, will be happy to discuss the group's range directly with customers throughout the exhibition. Lindsey will be joined by Mechan's export manager, Matthew StClair Smallwood, who is working to build and develop relationships with global clients to strengthen Mechan's overseas reach. Other members of the Mechan team will also be on hand to provide information on the company's range of rail depot lifting and handling equipment including lifting jacks, bogie drops, undercar handling, turntables, traversers and bogie handling equipment.

Mechan looks forward to meeting with you at the exhibition. To make an appointment, give the office a call on **(0114) 257 0563**, send the team an **email** or visit the **website** for more information.



RAIL DEPOT & WORKSHOP EQUIPMENT

- RAILCAR LIFTING JACKS
- BOGIE/EQUIPMENT DROPS
- TRAVERSERS
- TURNTABLES
- BOGIE WORKSHOP MACHINES
- UNDER CAR EQUIPMENT HANDLING
- LASER MEASURING
- SANDBOX FILLING
- SHUNTERS
- EXHAUST EXTRACTION
- UNDER FLOOR WHEEL LATHES



Davy Industrial Park
Prince of Wales Road
Sheffield S9 4EX

mechan.co.uk 

info@mechan.co.uk 

+44 (0)114 257 0563 