

E3 The advanced and reliable *WISE ACTION*®
Compression Latch Solution



Open up
a world of
possibilities

COMPRESS IT

TEST IT

VIBRATE IT

TOUCH IT

TRUST IT

Custom capabilities from Southco

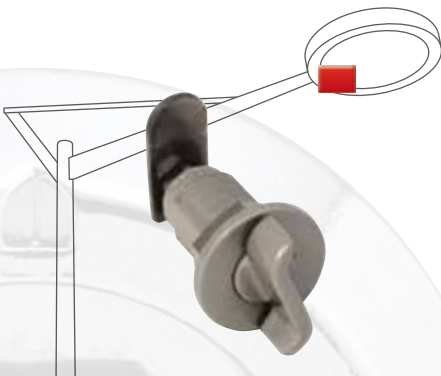


Custom Capabilities

Our *VISE ACTION*® compression latches can be customised to your needs, whatever they are, ensuring consistent operation in a wide number of industries and applications.

Street Lighting fixture

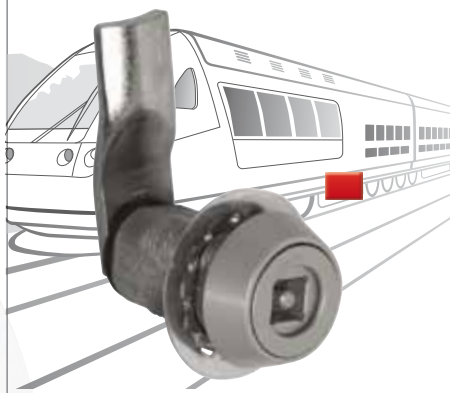
Our Challenge: A light weight easy access solution that would withstand heat and corrosion within a small space.



Solution: Using the small size version we decreased the internal protrusion, used aluminium with a silver finish to lighten and increase the degree of corrosion resistance. The knob style was changed to echo the customers logo.

British Railways - Secure access panel

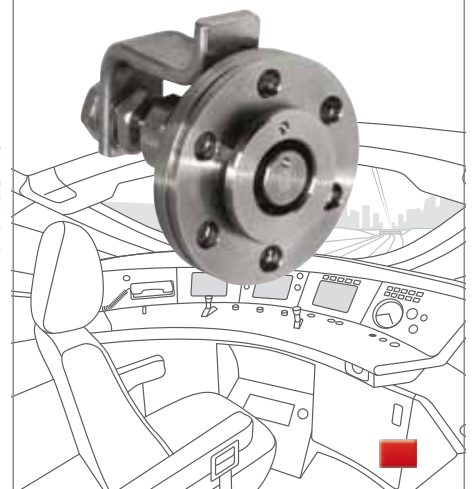
Our Challenge: To increase the level of security and tamper proofing using a special key for maintenance access points.



Solution: The latch head was modified to only allow the key to be removed in the open or closed position and we also added an additional pin to ensure it could only be opened by the correct key.

Hamburg Underground System

Our Challenge: A panel in the drivers area with limited space and a high life expectancy.



Solution: A corrosion resistant, flush none protruding compression latch made from stainless steel.

Proven supplier

Through our vast global presence, technical sales force and engineering experts, Southco seeks to understand the needs of its customers and meets the demanding standards of a multitude of industries.

Total Program Management

Southco offers a Total Program Management process that seamlessly integrates into your processes.

- Ensures product availability by streamlining response times
- Guarantees consistency by providing a seamless flow of information
- Our in-house design and product evaluation tools include FEA, rapid prototyping, failure analysis and mould flow analysis capability

Southco's operational capabilities and geographic reach provide our customers throughout the world with a rapid and cost-effective responsiveness

Operational Excellence

Southco's global operational reach is enhanced by the highest industry standards. Our strategically located centres of operational excellence meet the supply chain needs of our customers.



- INJECTION MOULDING
- DIE-CASTING
- METAL FORMING & TURNING
- DISTRIBUTION NETWORK
- GLOBAL ASSEMBLY NETWORK

The complete *WISE ACTION*[®] Compression Latch

Southco's *WISE ACTION*[®] Compression latches - A complete family of products to meet the most demanding requirements for durability, robustness, and environmental protection in a versatile, ergonomic and easy to use operation.

At the heart of every latch is the *WISE ACTION*[®] compression mechanism, that was invented by Southco more than 25 years ago. Over this time we have improved and perfected this mechanism to the peak of its performance.

Complementing the core of the product, we have the widest choice of sizes, materials and actuation styles to offer you a consistent, proven and at the same time versatile and ample choice of solutions for virtually thousands of applications.

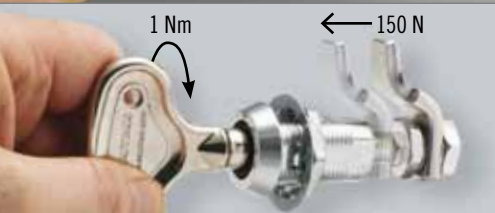
Here's how our *WISE ACTION*[®] compression latches can solve all your problems:

Some of the reasons why ...



Up to 6.4 mm of compression will ensure that:

- Constant and frequent operation causes no damage as the load is applied on a vertical axis without unnecessary scratching
- Gaskets are securely compressed (suitable for IP-65 / NEMA-4 rated applications)
- Your panel will be securely closed whatever the dimensions or grip variations along its length
- Your panel will not open accidentally under vibration or due to vandalism, only the use of the right tool or key will release the compression



A 1 Nm to 150 N operating torque to load ratio will help you:

- Compress and close big panels with minimal manual force
- Ensure a quick actuation enhancing the ergonomics of your application



An operating life of more than 10,000 cycles under a load of 450 N will:

- Reduce maintenance requirements and machine downtime
- Increase the durability of your application and reduce overall long term cost
- Ensure consistent, reliable operation over the years



An ultimate load up to 2,800 N and a working load of up to 1,200 N can:

- Minimise the risk of accidents due to sudden load changes (impact, shock, vibration and vandalism)
- Reduce the chances of a loss of performance due to material creep



Outstanding corrosion resistance of more than 1,000 hours according to ASTM B-117 will:

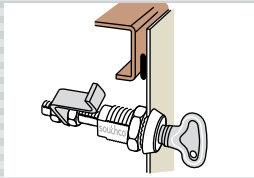
- Ensure long lasting and consistent operation even in demanding environments
- Enhance the aesthetics of your design for many years to come
- Comply with most industry standards and requirements for safety and hygiene



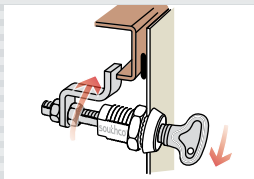
A vibration resistance of more than one million cycles on a cyclic load of 1,000 N means that:

- Heavy vibration will not cause any safety concerns
- Compression will be constantly applied during all stages of your product's operation

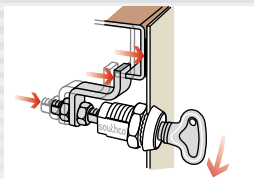
Versatility and simplicity in action



First 90° turn:
Cam rotates behind frame



The door is now **LATCHED**
against opening



Then as you complete the half-turn motion, the shaft and cam compress to pull the door snugly against the frame or gasket into the **locked** position

Once the latch is locked it can **ONLY** be actuated with the key or tool used.

It will **NOT** open accidentally due to vibration or vandalism

Every **SOUTHCO® VISE ACTION®** Series latch solution starts with the single-turn latching and compressing action that is built into each model. At the heart of it all is our **VISE ACTION®** design that has proven itself in millions of installations.

Product features

- Suitable for a wide range of load configurations
- Excellent corrosion resistance
- Durable and reliable operation
- Multiple size, material and access configurations
- Compression achieved with minimal manual torque
- Suitable for NEMA4 / IP65 applications

Match material and finish options for style and functionality requirements

Variety of materials and finishes to complement your application.

Die-cast zinc latch bodies standard finishes:



Chrome Plated



Black Powder Coated



Silver Powder Coated

Stainless steel latch bodies are made by metal injection molding or precise machining.



Moulded Stainless Steel

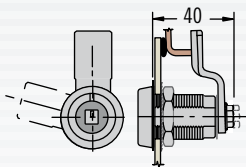


Machined Stainless Steel

Select one of these housing styles to fit your access requirements

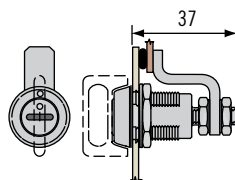
A series of basic housing styles of the **VISE ACTION®** compression latch have been developed to meet specific door configuration and mounting requirements - for depth, thickness, strength, grip dimension, and surface protrusion.

- Right and left hand actuation
- Optional pre-assembled cam for quick installation
- Wide choice of accessories



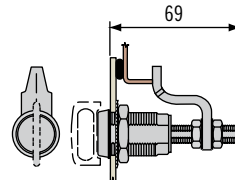
Large - Short Shaft

- Reduced internal protrusion
- Quick Installation



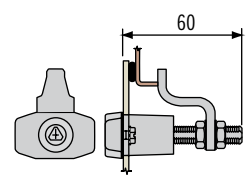
Small

- Optimum compression for use in confined space applications



Large - Long Shaft

- Largest choice of head styles
- Max. grip range in door to frame spacing



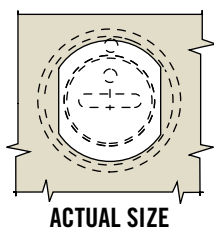
3-Hole Mount

- Simplified round-hole mounting
- Suitable for thick, soft or weak panels

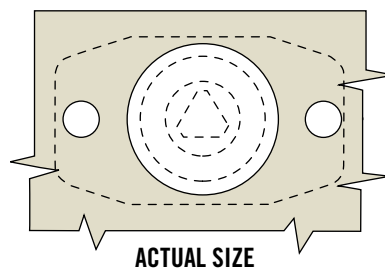
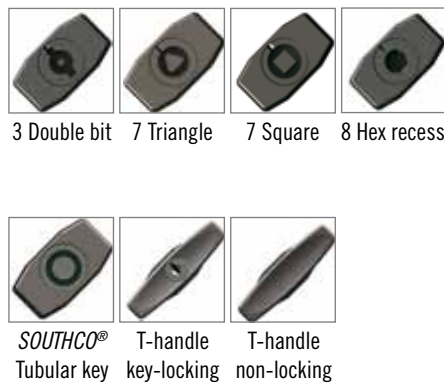
Choose from a wide range of available head styles to fit your application and industry requirements or contact us for your specific needs

- Convenient hand operated knob or T-handle styles for easy repetitive access
- Tool operated for restricted access, flush mount or low profile clearances, and industry specific standards or requirements
- Key operated for added security

Small single hole door preparation



3-Hole door preparation



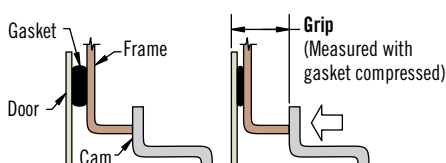
Large single hole door preparation



Determine your grip options for a perfect fit

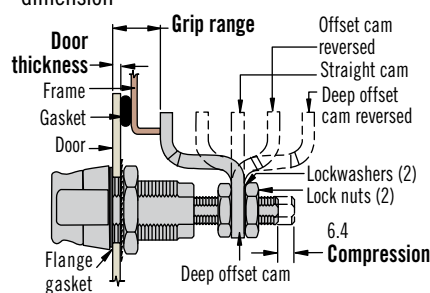
Grip dimension is an important consideration in compression latch applications involving gaskets for environmental or RFI sealing.

For gasketed doors



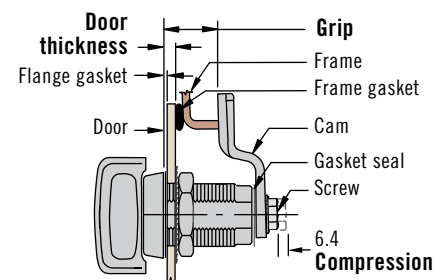
Adjustable cam designs

- Maximum flexibility in tolerance or gasket compression
- Cam choice to suit a broad range of grip dimension



Fixed cam designs

- Precise fit and minimum internal protrusion
- Wide cam selection for accurate grip dimension



The proven global leader in engineered access solutions

The advantage of 60 years of engineered access hardware and fastener experience lies in our cumulative applications knowledge and engineering expertise that make our broad range of existing solutions possible. In addition, our global manufacturing resources benefit OEMs and CEMs worldwide - no matter where they design, assemble, or sell:

- **Engineering assistance on your schedule.** Southco engineering resources in three key regions - North America, Europe, and Asia-Pacific - provide easy access to more than 150 design and sales engineers globally.
- **Extensive capabilities for your benefit.** In-house resources - stamping, die-casting, cold-heading, roll-forming, turning, injection-molding, and assembly - at Southco Centres of Excellence around the world transform raw stock into polished solutions.

- **Quick turnaround, on your timetable.** 16 strategically located Southco manufacturing, assembly, and stocking facilities - in 9 countries across 4 continents - shorten lead times, lower shipping costs, and improve scheduling.
- **Personal assistance, as you need it.** The 24/7 availability of experienced Southco personnel - regardless of geographic location - delivers the timely attention you require.

Whatever your access hardware needs, no one offers more. Contact a Southco representative today, to discover all the possibilities.



Global Corporate Headquarters & Customer and Technical Support Centre

Concordville · PA-USA

Tel: (1) 610 459 4000

Fax: (1) 610 459 4012

Canada Tel: (1) 905 855 0309

Mexico Tel: (1) 877 821 0666

Manufacturing & Stocking Locations

Chihuahua, Mexico

Concordville, Pennsylvania

Honeoye Falls, New York

Tecate, Mexico

Rockledge, Florida

Europe Customer & Technical Support Centre

Touch Point · UK

Tel: (44) (0) 1905 346722

Fax: (44) (0) 1905 346723

Austria Tel: 0800 281 831

France Tel: 0800 912 756

Germany Tel: 0800 1800 380

Italy Tel: 800 780 953

Spain Tel: 900 968917

Sweden Tel: 020 790 366

UK & NI Tel: 0845 117 9222

Manufacturing & Stocking Locations

Farnham, UK

Worcester, UK

Asia Customer & Technical Support Centre

Hong Kong · China

Tel: (852) 3127 1503

Fax: (852) 3127 1541

China Tel: 800 820 0272

Japan Tel: 00531 121672

Korea Tel: 0505 777 1234

Malaysia Tel: 1800 801 119

Singapore Tel: 800 18 11016

Taiwan Tel: 0800 558 015

Australia Customer Service and Distribution Centre

International Trade Park · 3 Aviation Place

Tullamarine · Victoria 3043 · Australia

Tel: (61) 03 9330-5000 · Fax: (61) 03 9330 - 5099

India Customer Service and Technical Support Centre

Plot A-6/5 · Ranjangaon Industrial

Taluka Shirur · Pune 412208 · India

Tel: (91) (21) 3867 0538 · Fax: (91) (21) 3867 0588

Manufacturing & Stocking Locations

Hong Kong, China

Melbourne, Australia

Pune, India

Seoul, South Korea

Shanghai, China

Shenzhen, China

Tokyo, Japan