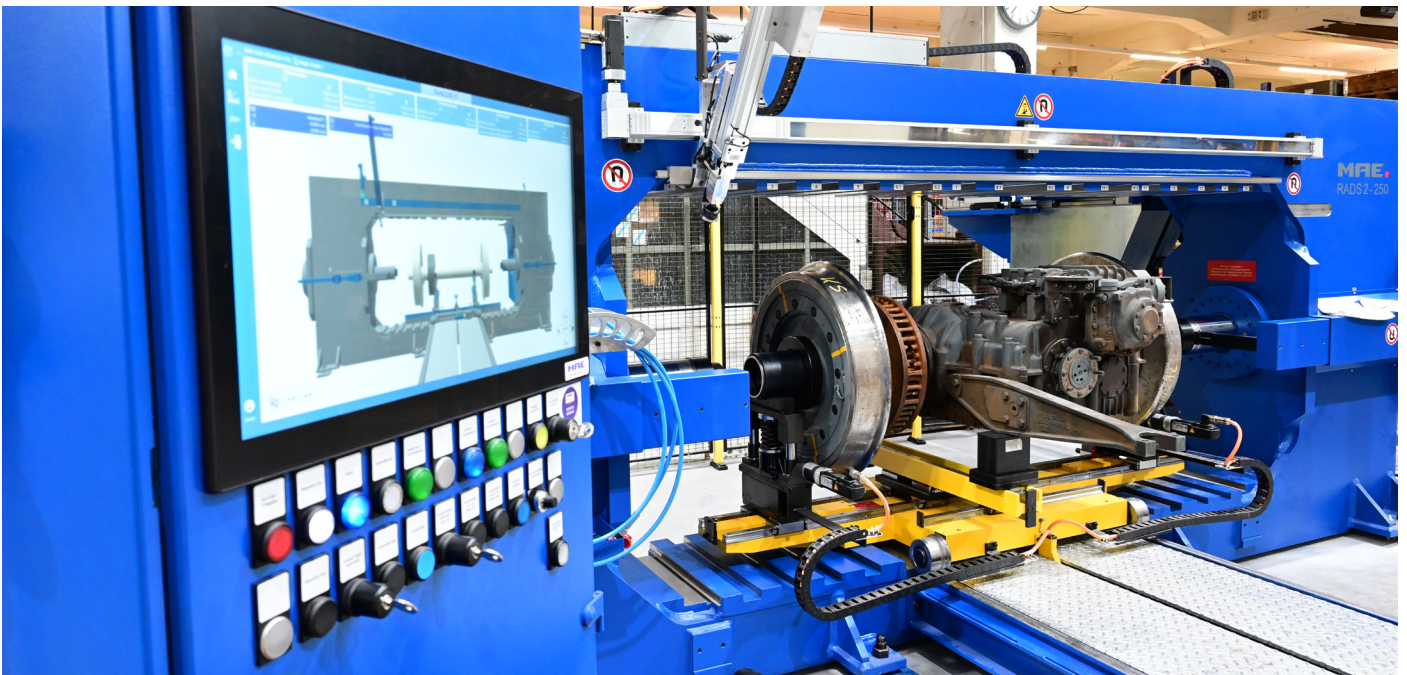


# Gmeinder

## Rail Service Center in Mosbach



Complete wheelset during operation on the MAE press

Gmeinder Rail Service Center in Mosbach is synonymous with swift, flexible and precise maintenance of rail vehicles. From minor inspections to extensive overhauls, we focus on minimising downtime thanks to our experts who carefully inspect every detail, from wheelsets to the smallest components.

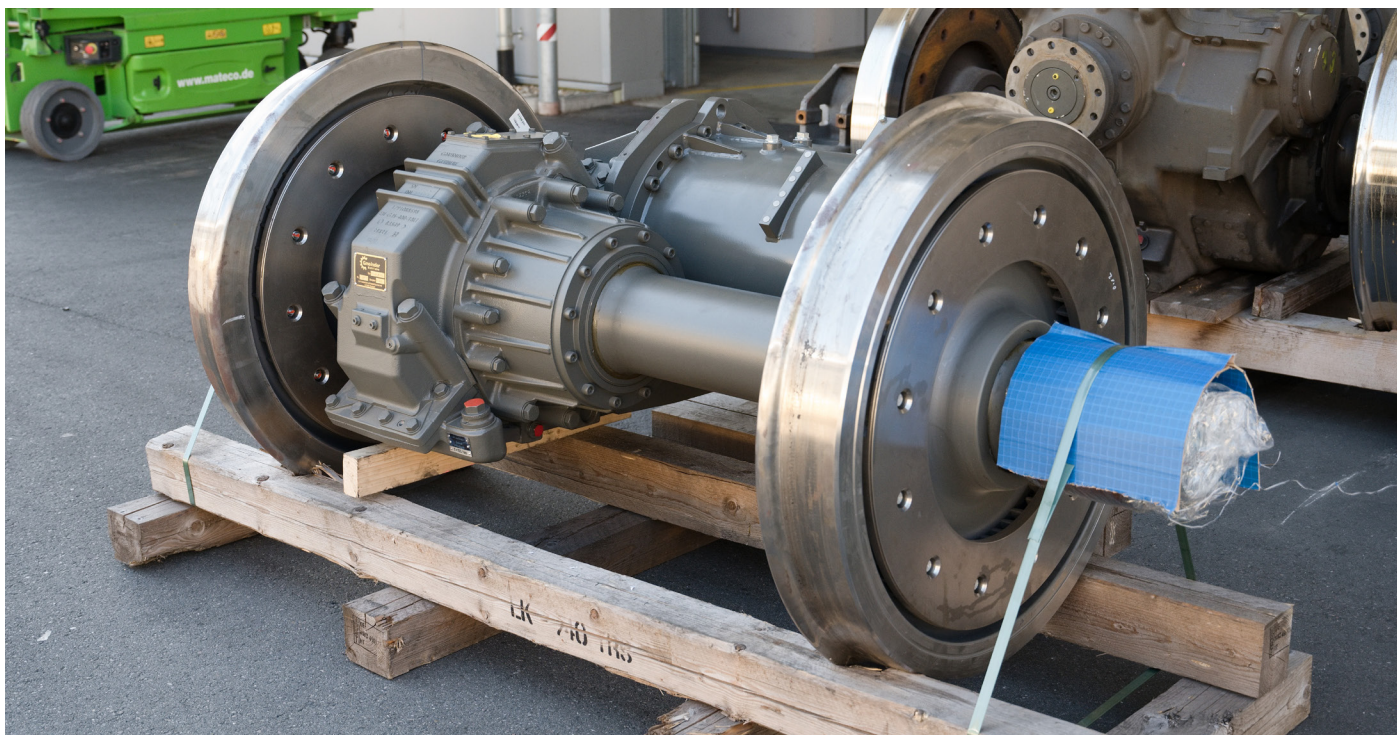
### Tradition Meets Modern Technology

Gmeinder Getriebe boasts more than 111 years of uninterrupted production of gearboxes for rail vehicles, a worldwide unique achievement. Thanks to this tradition and deep expertise, it now combines cutting-edge technology not only for manufacturing but also for servicing and repairing gearboxes. This technical

excellence is evident throughout the production facility, where trains from the neighbouring station meet a wide spectrum of locomotives and gearboxes from various brands.

### One-Stop Shop: Everything in One Place

Building a comprehensive service centre in Mosbach was a natural step that enables not only routine repairs but also significant technical enhancements. We offer modifications of gearboxes and other components that significantly prolong their lifespan and save costs for fleet operators. Our priority is entirely customer-focused – the goal is to relieve customers of their concerns and effectively address their requirements so they can focus on operating their fleet.



Gearbox, coupling, traction motor, axle and wheelset – standard delivery from Gmeinder Getriebe

## Wheelset Press: The Key to Success

To successfully fulfil our strategy, top-notch technology concentrated in one place is essential. A pivotal piece of equipment in our centre is the new MAE RADS 2-250 horizontally operating double-cylinder wheelset press from MAE, a company with over 70 years of experience in manufacturing such devices. This machine handles pressing wheelsets, brake discs and gearboxes for various types of vehicles, from high-speed trains to trams. With a maximum wheelset weight of up to 4000kg and an axle width of up to 2500mm, it covers nearly all needs of the railway sector.

## Investing in the Future

Thanks to the new Megaturn 1600 M CNC machining centre from Mazak, we have expanded our capabilities and can now repair axle wheel diameters. We can also perform demanding axle repairs using plasma spraying. While gearboxes remain our domain, we now repair all wheelset components with the same level of precision.

## Why Choose Gmeinder Rail Service Center?

Our services are built on a combination of tradition, innovation and technical know-how. Thanks to our

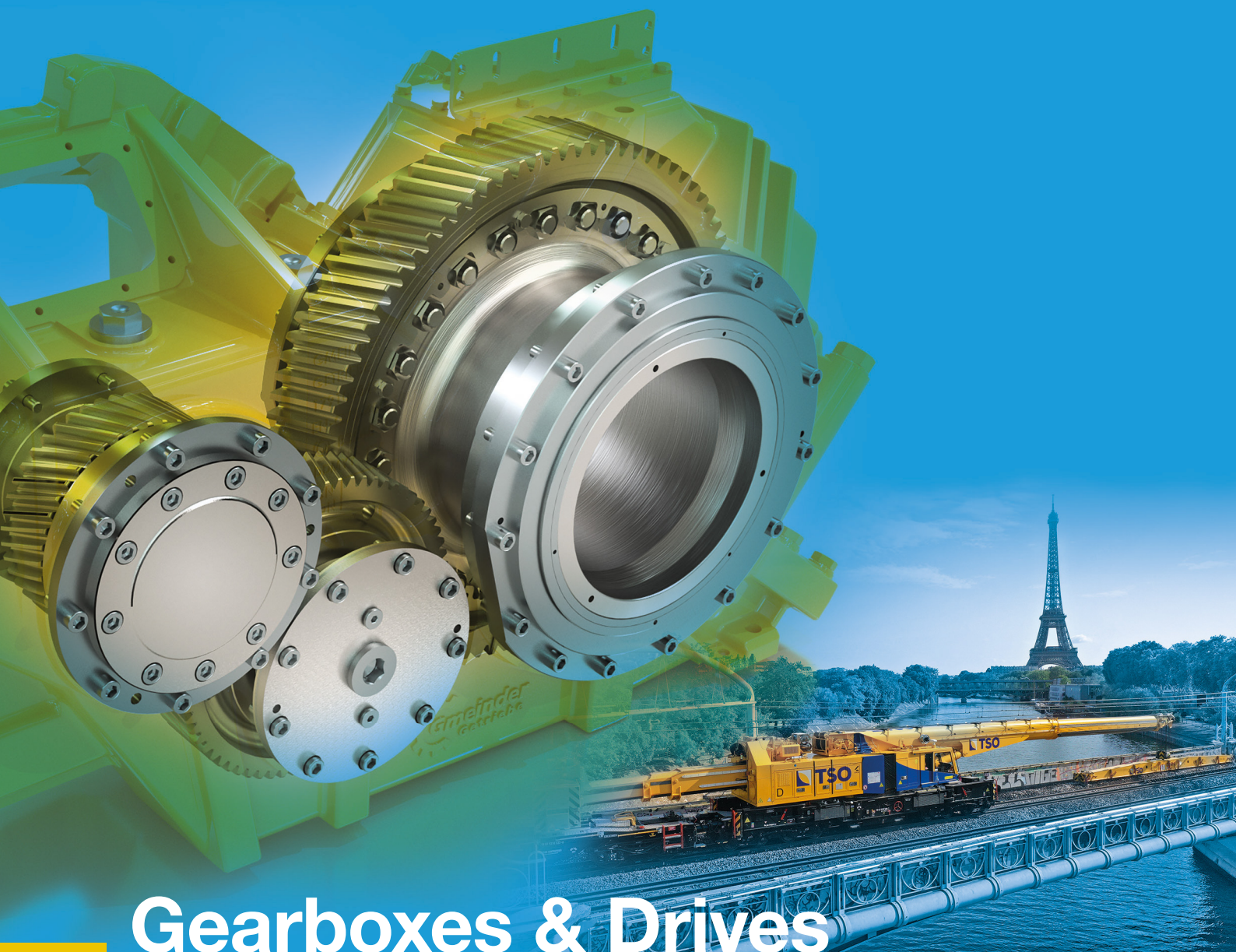
approach, equipment and experience, we offer not only repairs, but also significant technical improvements to components that will enable you to reduce costs and increase the efficiency of your vehicles in the long term. We're here to take the worry out of your hands and provide you with a top-quality service you can rely on.

Gmeinder Getriebe has been a part of the Wikov industrial group for five years, flourishing under its guidance. In collaboration with Wikov, the group provides an extensive range of gearboxes and drive systems for rolling stock, including trams, metro vehicles, EMUs/DMUs, locomotives and advanced drives for rail maintenance vehicles. Wikov group delivers new gearboxes, spare parts and comprehensive worldwide services, leveraging its production facilities located in Germany, the Czech Republic and India. The group has extensive testing capabilities, including dynamic load test facility or tests for extreme climatic conditions.

For more information visit [www.gmeinder.com](http://www.gmeinder.com).



*A Wikov Company*



# Gearboxes & Drives for Yellow Fleet

World of Rail Drives

[www.gmeinder.com](http://www.gmeinder.com)



**VISIT US!**

23. – 26. September 2025

**Stand No. E39, Hall E**