

# PowerRail

## PowerRail Expands to Larger Premises to Meet Growing Demand

PowerRail, North America's leading manufacturer, remanufacturer, and distributor of aftermarket locomotive parts and components, has long been known for its commitment to quality, price, service and delivery.

As that commitment has grown over the past 19 years, so too has the company, in more ways than one.

CEO and Chairman of the Board, Paul Foster, originally formed PowerRail in 2003 in Wilkes-Barre, Pennsylvania, USA. In 2006, after unprecedented growth, the company moved to a 7+ acre site in the neighbouring town of Duryea, including an 80,000sq.ft. warehouse to support the company's rapidly growing business.

In early 2021, 15 years after moving to Duryea, PowerRail was once again feeling the pressure of growing pains, so much so that a relocation became inevitable. With strong roots in the north-eastern corridor of Pennsylvania, it began the search for a new home in the area.



PowerRail's new building in Exeter, USA

In March 2022, PowerRail announced that it had purchased a 200,000sq.ft. building and would be moving its operations to a new state-of-the-art facility located in the nearby town of Exeter.

*"When I first started this company 19 years ago, we were simply a distributor," said Foster. "Over the years our business model has changed, and now we are much more than that. Today we are manufacturing and remanufacturing parts and components, and we're distributing*

*them globally. This new facility will allow us to continue to grow and provide our customers, both domestic and international, with the quality and service they have come to expect from PowerRail."*

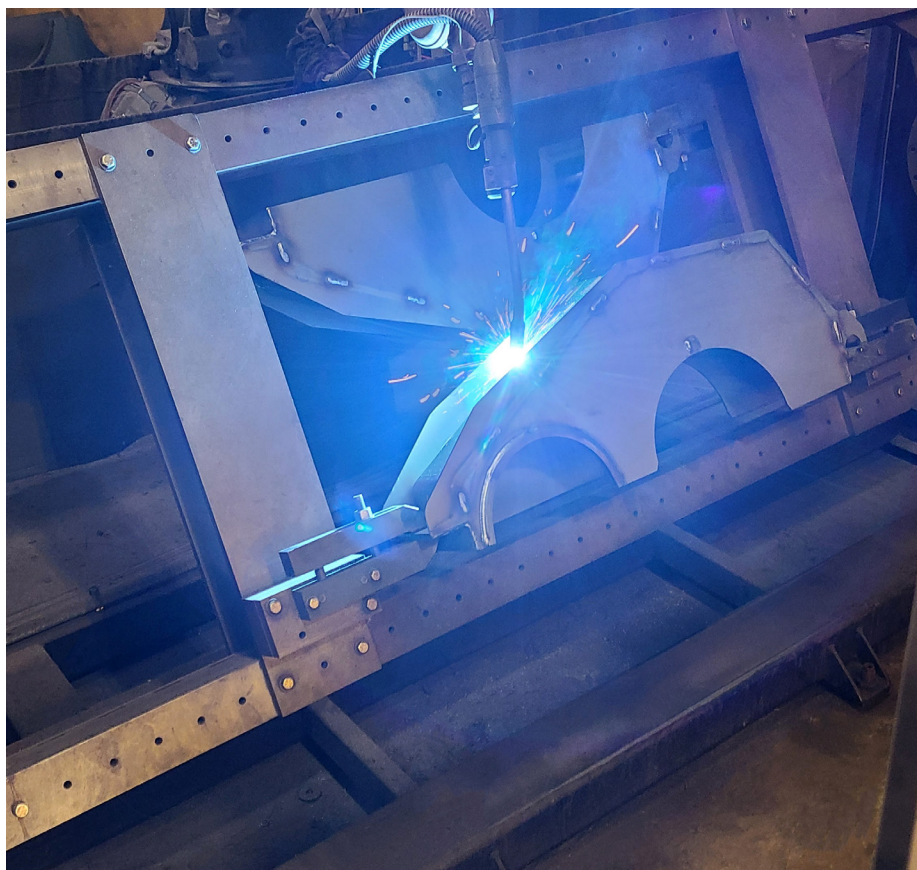
The new facility is more than double the size of the Duryea location, which housed the corporate offices and distribution centre. The additional warehouse space and numerous receiving and shipping docks will assist PowerRail in its goal of providing on-time delivery to customers around the world.

Executive Vice-President Mark Nolan shared, “*Within our logo are the words, ‘Quality, Price, Service, Delivery.’ Those four words are the basis of our culture at PowerRail. We continually strive to provide enhanced products with cost-savings, reliability, and quality in mind.*” Nolan went on to say, “*The development that will come with this new building will allow us to continue to grow and focus on expanding our product offerings for our customers.*”

The relocation to the new facility has also allowed PowerRail the opportunity to consolidate some of its existing locations. Currently housed at PowerRail’s new main campus in Exeter are the corporate offices and distribution centre, as well as two of PowerRail’s manufacturing facilities, Avoca Rail Products and Cooper Bearings. Having all of these facilities under one roof has allowed for more efficient synergies between the locations.

Avoca Rail Products is PowerRail’s full-service fabrication and welding facility, supplying the rail industry with quality locomotive truck / bogie parts. Avoca Rail also specialises in products such as guide assemblies, traction motor covers, exhaust chambers, spring packs, and more. Cooper Bearings provides remanufactured bearings and journal boxes. They are the leading experts in innovation and quality of bearings and journal boxes, used in both freight and passenger locomotives and cars.

PowerRail’s new location not only offers room for growth but will also assist in reducing the company’s carbon footprint. The new facility includes a wide range of



*Gear case production at PowerRail’s Avoca Rail Products facility*

environmentally friendly efficiencies, such as LED lighting, a highly efficient HVAC system, energy-efficient electrical systems for equipment and machinery, as well as a new environmentally safe powder coating system in lieu of spray painting. Employees also continue to participate in the company-wide recycling programme which includes paper, cardboard, and plastics.

Originally formed in 2003, PowerRail is a United States-based company, with several locations in various parts of the world. PowerRail proudly offers a wide range of new and rebuilt rail-related parts and components including bearings and journal boxes, electrical rotating parts, engine components, compressors, pumps, and motors from their various manufacturing facilities across the

US. In addition, PowerRail offers locomotive rebuilds, overhauls and mobile maintenance at its locomotive shop. PowerRail also serves as a global supplier with locations in Europe and Australia.

**Scan or click the QR code to download the latest catalogue**



[epowerrail.com](http://epowerrail.com)







# POWERRAIL

CREATIVE INNOVATIONS...CONTINUING TRADITION

## Keeping YOUR Locomotive Running is OUR Business!

### BULBS AND HOUSINGS



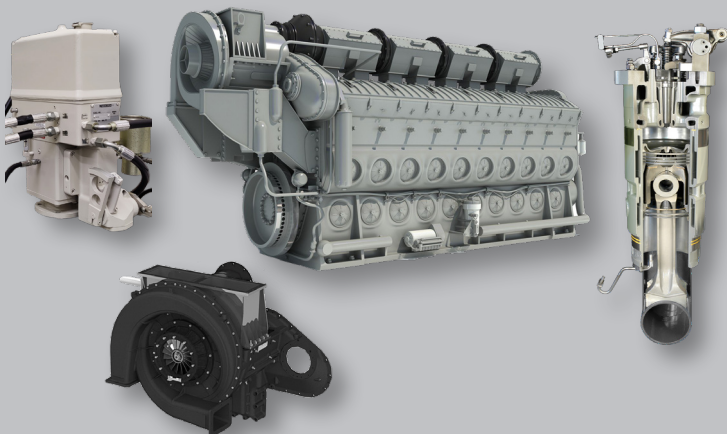
### GASKETS AND SEALS



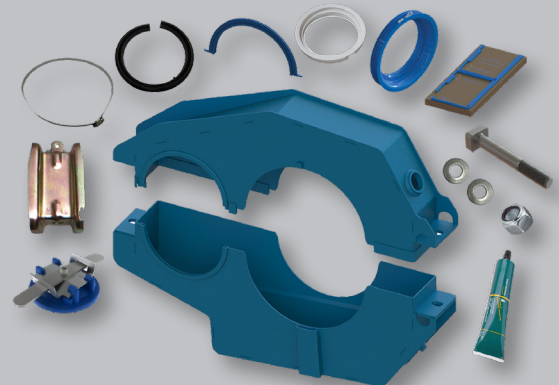
### TRUCK PARTS AND OVERHAULS



### ENGINE PARTS AND COMPONENTS



### GEAR CASES AND KITS



[SalesInt@ePowerRail.com](mailto:SalesInt@ePowerRail.com)

570-883-7005

[WWW.ePowerRail.Com](http://WWW.ePowerRail.Com)

Download the  
NEW PowerRail  
Catalog



CLICK OR  
SCAN ME

