

[Home](#) Directory

[Infrastructure](#)

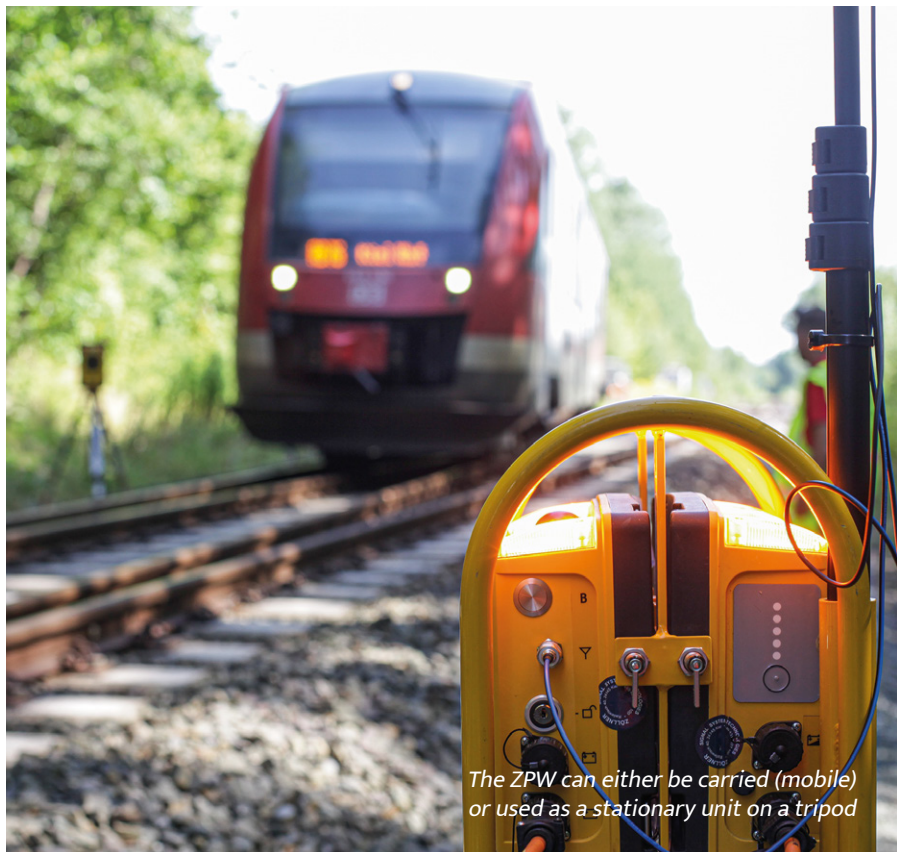
# ZÖLLNER

## Permanent Radio Warning Systems

For many years, the MRWS mobile radio warning system has been used to protect employees in track areas all over Europe.

The components in the MRWS family can be combined modularly and flexibly, making it possible to always provide the best solutions for every worksite situation.

One innovative method to protect worksites that require regular maintenance access are permanently installed warning systems. Examples are junctions, tunnels or bridges.



The ZPW can either be carried (mobile) or used as a stationary unit on a tripod



Safety guard wearing a ZPW110 warning device



# How It Works

Train detectors are permanently installed at the sighting distance. The photo (Fig 1) shows a system where the whole train detection part of the system including the radio transmitter are installed in a location case and are permanently powered by mains.

The radio transmitter covers the whole warning area as shown in the configuration graphics below (Fig 2). To use the system the warning devices simply need to be logged into the same radio group as the transmitters. The setting up time consequently is very low.

The SIL4 failsafe architecture and the high availability of a permanently installed radio warning system highly increases the safety for the employees as well as reduces costs compared to conventional safety measures.

For any further information please get in touch  
[tracksafety@zollner-uk.co.uk](mailto:tracksafety@zollner-uk.co.uk)



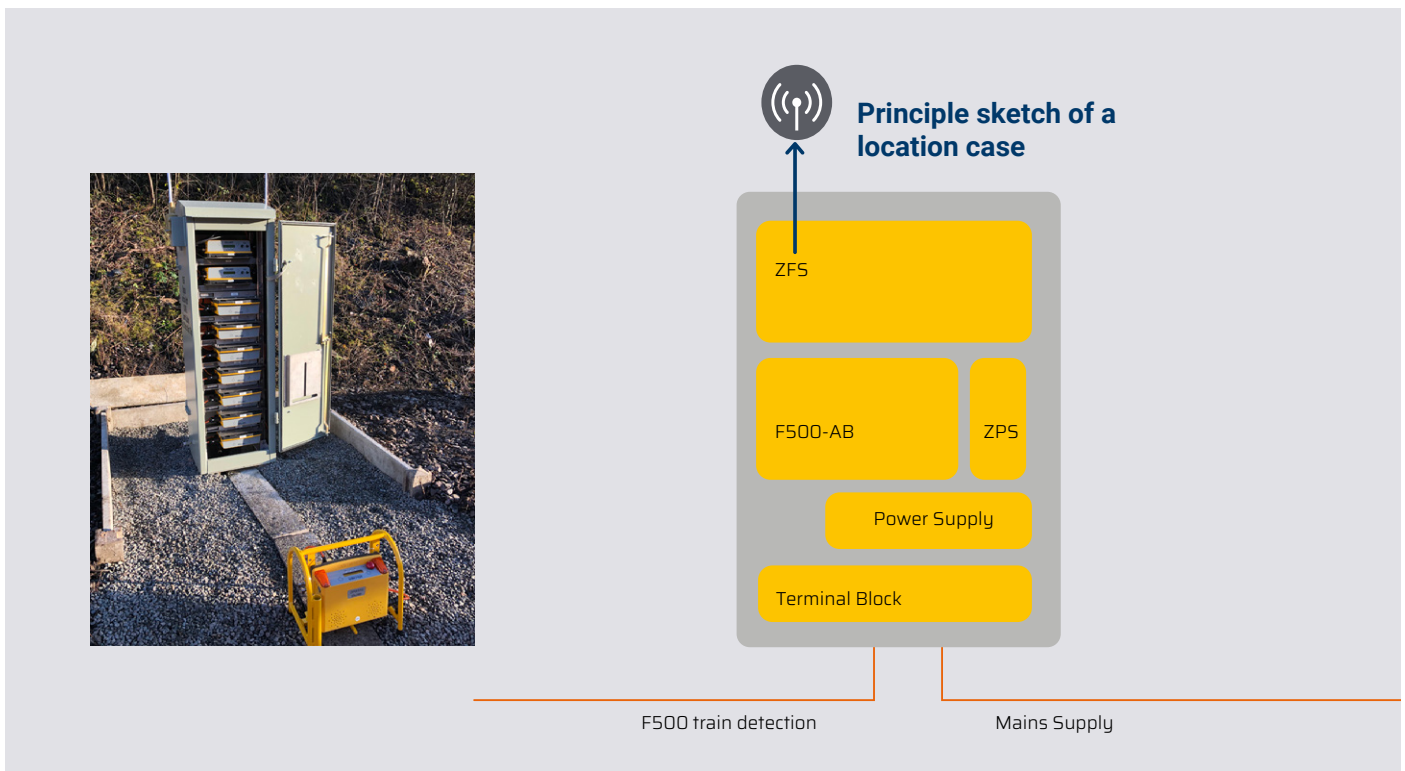


Fig. 1 Location case // Wigston Junction Project

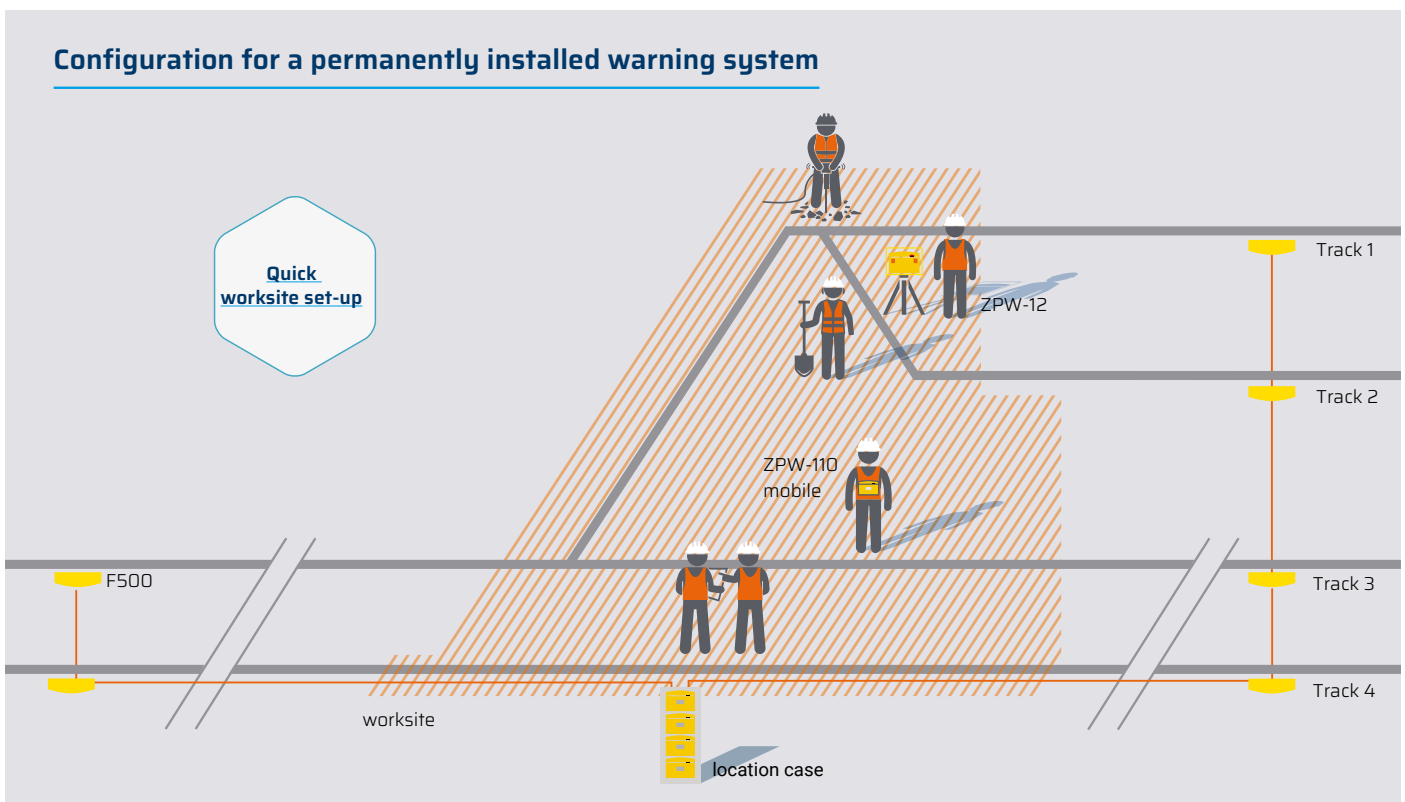


Fig. 2 Example installation for a permanent semi-automatic warning system (SATWS)



# FIXED & TEMPORARY WARNING SYSTEMS

Commissioning

Planning

Consulting

**Quick  
worksite set-up**