



Performing Maintenance and Emergency Repairs  
With Minimal Downtime and Disruption:

Three Factors to Consider





## THREE KEY FACTORS TO CONSIDER:

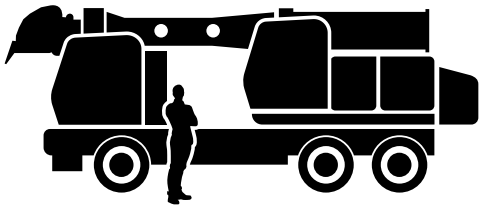
**1** How quickly can you get to the site and start working?

**2** What equipment is needed to get the job done?

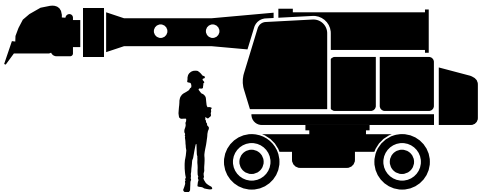
**3** How fast can you get off the tracks?

**When you have a rail emergency, or even scheduled repairs and maintenance, you need to get there, get the job done and get off the tracks... as quickly as possible.**

## GET WORKING FASTER WITH ONE MAN, ONE MACHINE



**Highway-speed** undercarriage models can be driven at speeds up to 60 mph to get your crew to the crossing and on the rails quicker. No need for a truck, trailer and driver to haul it to the job site. When the job's done, just drive it back to the yard.



Rubber-tire, **on- off-pavement** carriers can travel about 20 mph to a close crossing, and are exceptionally stable, with the ability to work in any direction without the need for outriggers.



## PROJECT:

# NORFOLK SOUTHERN RAILWAY, EASTERN LAKE DIVISION

The Eastern Lake Division, extending from Portsmouth to Sandusky, Ohio, includes about 400 miles of track including the busy Toledo and Cleveland areas.

### Versatility and Productivity Keys

- Fixed thumb grapple for efficient removal of overgrown vegetation including trees, small brush, and other obstructions
- Quick-change attachments for multiple tasks, including ditching, ballast restoration, washout cleanup and mud removal from track and ties



**WATCH IT IN ACTION**

✓ **DITCHING**

✓ **TREE REMOVAL**

✓ **BALLAST RESTORATION**

✓ **CLEANING UP WASHOUTS**

**GRADALL® | 3**



# EXPEDITED MOBILITY ON THE TRACK MEANS INCREASED EFFICIENCY



Rapid Drive is Gradall's newest cutting-edge technology, available on select highway-speed models. RD Models travel on rails up to 30 mph in both directions getting you to the job site and back quickly and efficiently.

**SEE HOW IT WORKS**

## **Rapid Drive Works Even Faster**

With a coupler and airbrakes, Rapid Drive provides the ability to tow along a railcar for carrying materials, like replacement ties or riprap, to and from the jobsite with one man and one machine.



**GRADALL® | 4**



TELESCOPING

220°

## GET THE JOB DONE. THEN MOVE ON.

Most maintenance or repair projects require more than one task be completed. And the work may be in challenging environments such as under bridges, catenary systems, or inside tunnels. Only TrackStar has the advantage of the renowned Gradall telescoping, tilting boom that allows it to work in these low overhead situations, while delivering full power at any boom angle. In addition, the entire boom can rotate as it telescopes, to properly position a full array of railway maintenance attachments, for the versatility you need to get multiple jobs done as quickly as possible.

## PUT IT TO WORK

- Positioning rails and ties
- Removing vegetation
- Spreading ballast
- Repairing crossings
- Cleaning up washouts
- Ditching
- And much more

**GRADALL® | 5**

# MOW ATTACHMENTS FOR MORE PRODUCTIVITY

TrackStar's boom with auxiliary hydraulics and electrics facilitates precise placement of a wide array of quick-attach railway maintenance and construction tools. One man and one machine can handle multiple tasks, saving time, money and manpower.



- Ballast broom
- Ballast blade
- Ballast tamper
- Ballast bucket
- Boom extension
- Ditching & dredging buckets
- Excavating buckets
- Flail mower
- Grading blade
- Grapple
- Hydraulic hammer
- Hydraulic coupler
- Hydraulic rotator
- Sleep changer
- Tree limb shear



PROJECT:

# MASSACHUSETTS BAY TRANSPORTATION AUTHORITY GREEN LINE

Contractor: LM Heavy Civil Construction

MBTA is committed to ongoing maintenance programs while also accommodating over 200,000 people who travel in and out of Boston on rails every day. LM, with its fleet of six Gradall TrackStar machines, handles jobs such as extraction and replacement of ties and evenly spreading ballast to complete the job.

## Versatility and Productivity Keys

- Tie grapple with ballast blade attachment extracts and replaces ties, then evenly spreads ballast
- Gradall telescoping boom allows work in limited overhead areas running underground through downtown



**SEE IT WORK**

**GRADALL® | 7**

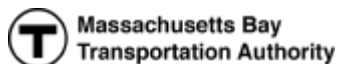
✓ **CLEAR DITCHES**

✓ **REPLACE CULVERTS**

✓ **REPAIR CROSSING  
SECTIONS, CHIPPING OUT  
CONCRETE, POURING NEW  
SLABS AND INSTALLING  
NEW RAILS**

# HIGHLY SOUGHT-AFTER AND TRUSTED SOLUTIONS

Gradall TrackStar Railway Maintenance Machines have been relied upon and trusted by highly respected transit authorities, Class 1s, short-lines and railroad contractors for over 50 years in the United States. **Now available worldwide.**



## REMEMBER...

**All Railway Maintenance Machines  
Are NOT Created Equal.**

Only TrackStar Railway Maintenance Machines by Gradall can get you to the job fast, get the job done quickly and efficiently, and get you off the tracks with minimal downtime and disruption.

**SEE ALL TRACKSTAR MODELS**

**GRADALL® | 8**



Learn more about how TrackStar Railway Maintenance Machines can improve your productivity.

**GRADALLRAIL.COM**

