

ANCILLARY SYSTEMS **SIMPLIFIED**



Modularised Ancillary Systems

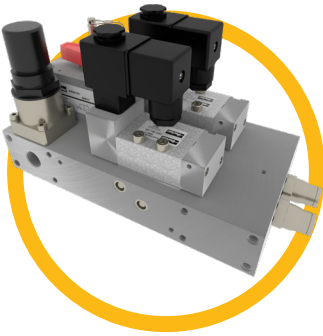
Transforming the Future of the Rail Industry



ENGINEERING YOUR SUCCESS.

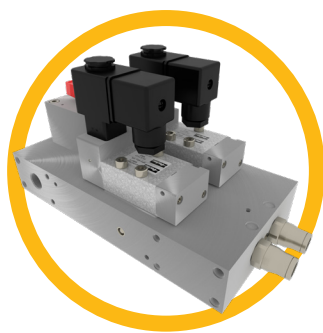
ANCILLARY SYSTEMS **TRANSFORMED**

Ancillary systems for rail applications have evolved. The future of modularisation is here, and the all new Parker modularised plug and play system is ready to transform your application.



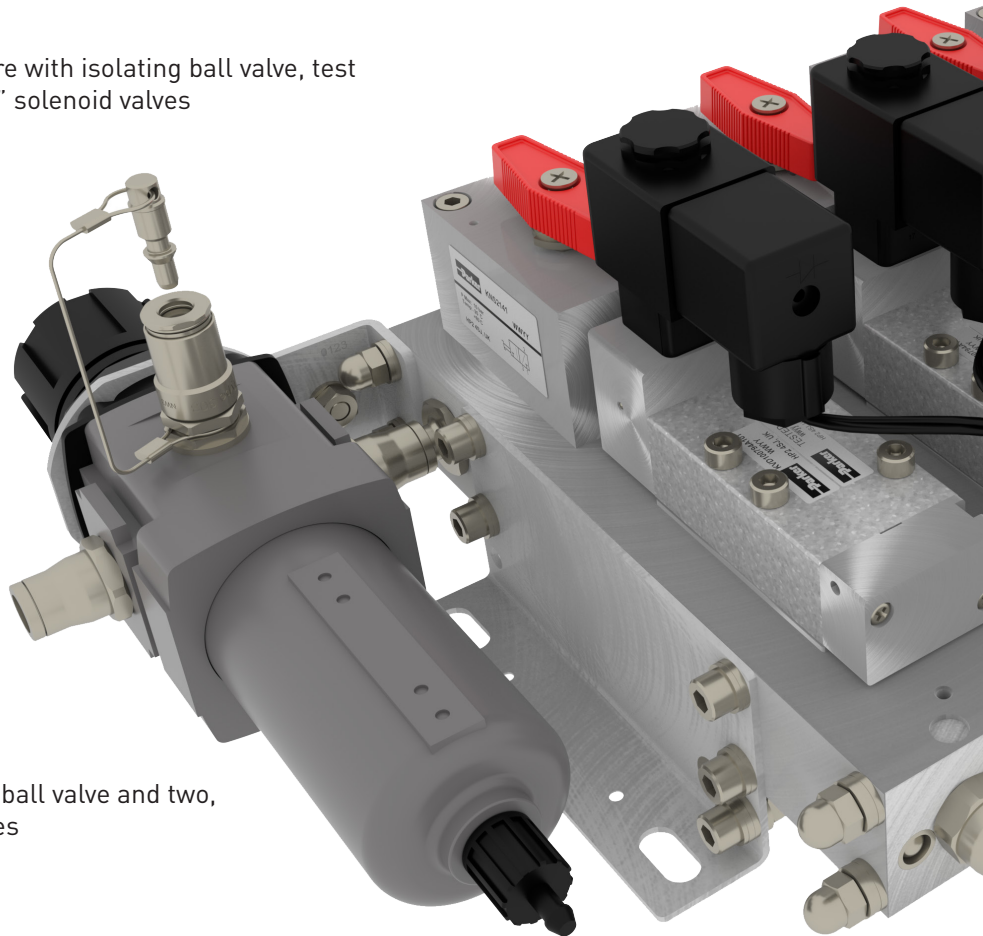
MODULE A

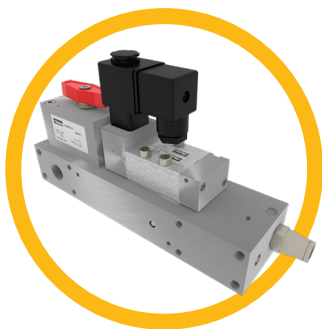
Regulated pressure with isolating ball valve, test point and two, 3/2" solenoid valves



MODULE B

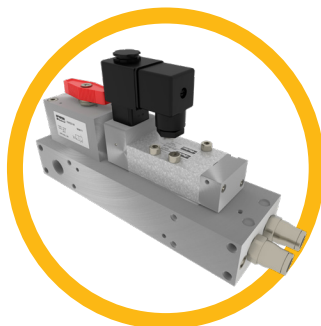
Includes isolating ball valve and two, 3/2" solenoid valves





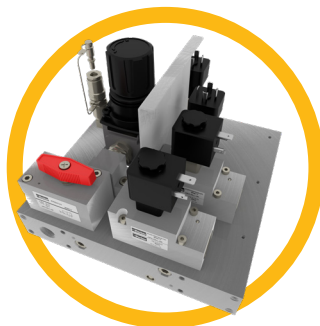
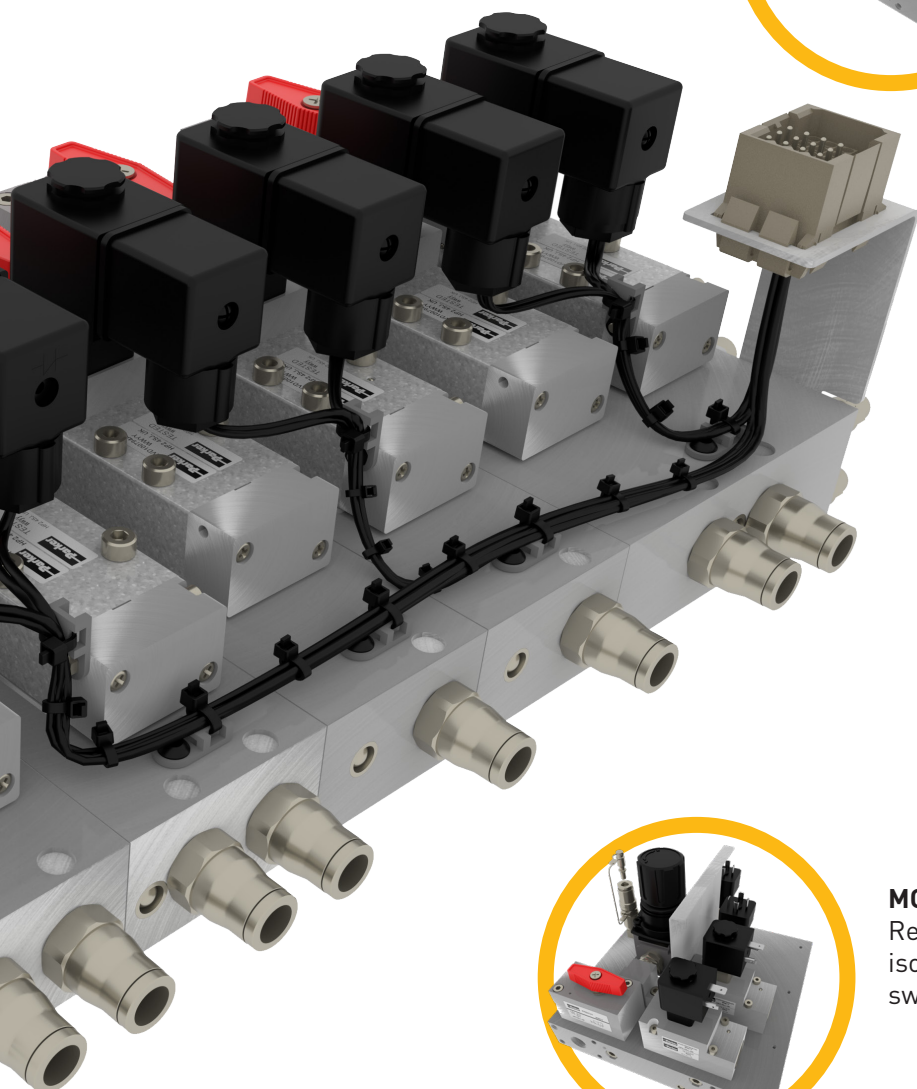
MODULE C

Includes isolating ball valve and one 3/2" solenoid valve



MODULE D

Includes isolating ball valve and one 5/2" solenoid valve



MODULE H

Regulated pressure with solenoid valves and isolating ball valve, test point and pressure switch for feedback

EXAMPLE APPLICATIONS

- RAILHEAD LUBRICATION
- SANDING
- WHEEL FLANGE LUBRICATION
- AUTO COUPLING
- MIRRORS
- DRIVER'S SEAT
- WIPERS
- SUSPENSION
- HORN
- MAGNETIC TRACK BRAKE

STANDARD MODULES

MULTIPLE COMBINATIONS
ONE SUPPLIER

OVERVIEW

Application Examples	Module									
	A	B	C	C1	D	D1	F	Q	P	P1
	Rail head lubrication	Sanding	Gear Wheel Lubrication	Driver's Seat (Regulated)	Mirrors	Mirrors (With position hold)	Auto Coupling (double valve)	Horn Control (With a single pressure)	Horn (With both high and low pressure)	Magnetic Track Brake
			Wheel Flange Lubrication	Wipers		Hatch Cover (Coupling Flaps)				
			Auto Coupling							
			Parking Brake							

The modular system approach utilizes a series of standard “building” or “function” modules.

Each module provides individual isolation of its control circuit. The individual control element is different and can be used for different vehicle applications and has the potential for use across several application areas.

Each circuit block is linked by earth braiding and all bonded to the vehicle earth point.

TECHNICAL	
OPERATING PRESSURE	3.5 to 10 BAR
INPUT PORT SIZE	G3/8"
OUTPUT PORT SIZE	G1/4" [except Horn and Magnetic Brake G3/8"]
OPERATING TEMPERATURE	-25°C to +60°C
VOLTAGES AVAILABLE	24 Vdc
	36 Vdc
	110 Vdc
VOLTAGE TOLERANCE	-25% to +30%
APPROVED FOR SHOCK AND VIBRATION	BS EN61373 : 2010 Category 1, Class B
MEETS REQUIREMENTS	EN45545-2
AIR QUALITY REQUIREMENT T0:	ISO 8573-1 : 2010 Class 333

OPTIONS	
EXTERNALLY MOUNTED FILTER REGULATOR	As shown on internal image (Part Number: P32EB13EMMBNNP)
ISOLATING BALL VALVES	1 - Standard
	2 - As 1) plus micro switch for position indication
	3 - As 2) plus key lockable handle
TEST POINTS	Can also be used to mount feedback sensors

