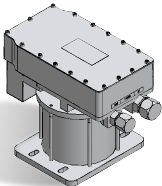


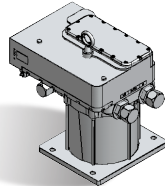
PRODUCT LINE CARD 5/2026

Robust electromechanical solutions for industry.

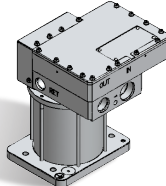
Smart Fuel Pumps



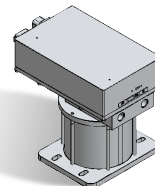
Class 1



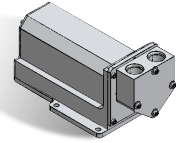
Class 2



Class 3

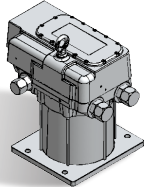


Class 4

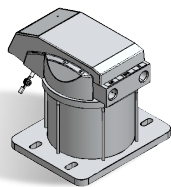


Class 5

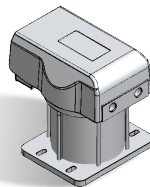
Fuel Pumps



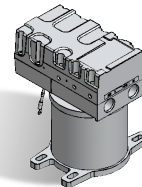
Class 1



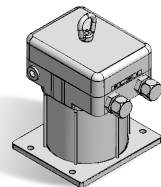
Class 2



Class 3

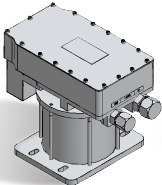


Class 4

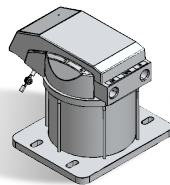


Class 5

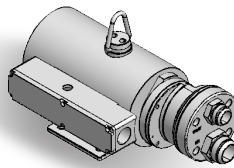
Prelube/Oil Pumps



Class 1

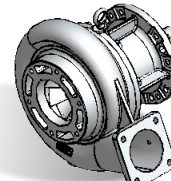


Class 2



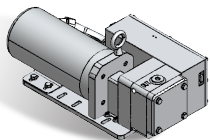
Class 3

Coolant Pumps

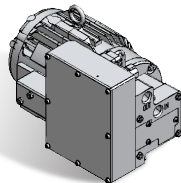


Water Pump

DEF Pumps

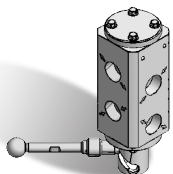


Class 1

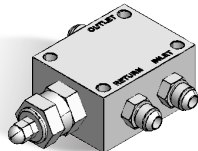


Class 2

Other Products



Duplex Valve



Regulating/Relief Valve

Paragon Products, LLC

625 Coolidge Drive, Suite 100 Folsom, CA 95630
T: +1 (916) 941-9717 F: +1 (916) 941-9727
E: customerservice@paragonproducts.net
paragonproducts.net

PRODUCT LINE CARD 5/2026

Don't see your specification? Call us for a custom-engineered solution.

Smart Fuel Pumps

| CLASS | ITEM NO. | DESCRIPTION | INPUT VOLTAGE | FLOW | PRESSURE | MAX. CURRENT | HT. x WD. x DP. (Looking at Ports) |
|-------|----------|--------------------------------------|---------------|---------------------|----------------------|--------------|---|
| 1 | 66256-9 | 7 gpm 150 psi Fuel Pump - 74 vdc | 74 vdc | 7-8 gpm / 27-30 lpm | 0-150 psi / 0-10 bar | 25 amps | 10 x 8.5 x 12.6 in / 254 x 216 x 320 mm |
| 1 | 66705-9 | 7 gpm 120 psi VS Fuel Pump - 74 vdc | 74 vdc | 7-8 gpm / 27-30 lpm | 0-120 psi / 0-8 bar | 25 amps | 10 x 8.5 x 12.6 in / 254 x 216 x 320 mm |
| 2 | 65609-9 | 7 gpm 180 psi Fuel Pump - 74 vdc | 74 vdc | 7-8 gpm / 27-30 lpm | 0-180 psi / 0-12 bar | 35 amps | 14.4 x 9.5 x 13.6 in / 366 x 241 x 345 mm |
| 2 | 66896-9 | 15 gpm 120 psi VS Fuel Pump - 74 vdc | 74 vdc | 15 gpm / 57 lpm | 0-120 psi / 0-8 bar | 35 amps | 14.4 x 9.5 x 13.6 in / 366 x 241 x 345 mm |
| 2 | 65610-9 | 12 gpm 180 psi Fuel Pump - 74 vdc | 74 vdc | 12 gpm / 45 lpm | 0-180 psi / 0-12 bar | 35 amps | 14.4 x 9.5 x 13.6 in / 366 x 241 x 345 mm |
| 2 | 65611-9 | 15 gpm 150 psi Fuel Pump - 74 vdc | 74 vdc | 15 gpm / 57 lpm | 0-150 psi / 0-10 bar | 35 amps | 14.4 x 9.5 x 13.6 in / 366 x 241 x 345 mm |
| 2 | 66537-9 | 12 gpm 180 psi Fuel Pump - 110 vdc | 110 vdc | 12 gpm / 45 lpm | 0-180 psi / 0-12 bar | 25 amps | 14.4 x 9.5 x 13.6 in / 366 x 241 x 345 mm |
| 3 | 64692-19 | 9 gpm 180 psi Fuel Pump - 24 vdc | 24 vdc | 0-9 gpm / 0-34 lpm | 0-180 psi / 0-12 bar | 55 amps | 12 x 8 x 11.1 in / 305 x 203 x 282 mm |
| 3 | 64244-49 | 9 gpm 180 psi Fuel Pump - 74 vdc | 74 vdc | 0-9 gpm / 0-34 lpm | 0-180 psi / 0-12 bar | 25 amps | 12 x 7 x 11 in / 305 x 178 x 279 mm |
| 4 | 66126-9 | 8 gpm 30 psi Fuel Pump - 74 vdc | 74 vdc | 8 gpm / 30 lpm | 0-30 psi / 0-2 bar | 15 amps | 10.4 x 8.5 x 12.1 in / 264 x 216 x 307 mm |
| 5 | 64124-29 | 4 gpm 50 psi Fuel Pump - 24 vdc | 24 vdc | 0-4 gpm / 0-15 lpm | 0-50 psi / 0-3 bar | 15 amps | 6 x 5.6 x 11.1 in / 152 x 142 x 282 mm |

Fuel Pumps

| CLASS | ITEM NO. | DESCRIPTION | INPUT VOLTAGE | FLOW | PRESSURE | MAX. CURRENT | HT. x WD. x DP. (Looking at Ports) |
|-------|----------|------------------------------------|-----------------|---------------------|----------------------|--------------|---|
| 1 | 64023-19 | 7 gpm 180 psi Fuel Pump - 74 vdc | 74 vdc | 7-8 gpm / 27-30 lpm | 0-180 psi / 0-12 bar | 35 amps | 14.4 x 9.5 x 13.6 in / 366 x 241 x 345 mm |
| 1 | 64024-9 | 12 gpm 180 psi Fuel Pump - 74 vdc | 74 vdc | 12 gpm / 45 lpm | 0-180 psi / 0-12 bar | 35 amps | 14.4 x 9.5 x 13.6 in / 366 x 241 x 345 mm |
| 1 | 64025-9 | 15 gpm 150 psi Fuel Pump - 74 vdc | 74 vdc | 15 gpm / 57 lpm | 0-150 psi / 0-10 bar | 35 amps | 14.4 x 9.5 x 13.6 in / 366 x 241 x 345 mm |
| 1 | 65623-9 | 5 gpm 140 psi Fuel Pump - 110 vdc | 110 vdc | 5 gpm / 19 lpm | 0-140 psi / 0-10 bar | 25 amps | 14.4 x 9.5 x 13.6 in / 366 x 241 x 345 mm |
| 1 | 64790-9 | 12 gpm 180 psi Fuel Pump - 110 vdc | 110 vdc | 12 gpm / 45 lpm | 0-180 psi / 0-12 bar | 25 amps | 14.4 x 9.5 x 13.6 in / 366 x 241 x 345 mm |
| 1 | 64386-9 | 15 gpm 150 psi Fuel Pump - 110 vdc | 110 vdc | 15 gpm / 45 lpm | 0-150 psi / 0-10 bar | 25 amps | 14.4 x 9.5 x 13.6 in / 366 x 241 x 345 mm |
| 2 | 62606-9 | 2.1 gpm 3 psi Fuel Pump - 24 vdc | 24 vdc | 2.1 gpm / 8 lpm | 3 psi / 0.2 bar | 8 amps | 7.8 x 8.5 x 9 in / 198 x 216 x 229 mm |
| 2 | 61276-9 | 4 gpm 90 psi Fuel Pump - 74 vdc | 74 vdc | 4 gpm / 15 lpm | 90 psi / 6 bar | 11 amps | 7.8 x 8.5 x 9 in / 198 x 216 x 229 mm |
| 2 | 61815-9 | 7 gpm 90 psi Fuel Pump - 74 vdc | 74 vdc | 7 gpm / 27 lpm | 90 psi / 6 bar | 14 amps | 7.8 x 8.5 x 9 in / 198 x 216 x 229 mm |
| 2 | 61815-39 | 7 gpm 100 psi Fuel Pump - 110 vdc | 110 vdc | 7 gpm / 27 lpm | 100 psi / 7 bar | 10 amps | 7.7 x 7 x 9 in / 196 x 178 x 229 mm |
| 3 | 61859-79 | 7 gpm 120 psi Fuel Pump - 74 vdc | 74 vdc | 7 gpm / 27 lpm | 0-120 psi / 0-8 bar | 17 amps | 9.5 x 8.5 x 9.8 in / 241 x 216 x 249 mm |
| 3 | 61859-59 | 7 gpm 120 psi Fuel Pump - 110 vdc | 110 vdc | 10.5 gpm / 40 lpm | 0-100 psi / 0-7 bar | 17 amps | 9.5 x 8.5 x 9.8 in / 241 x 216 x 249 mm |
| 4 | 64187-9 | 8 gpm 120 psi Fuel Pump - 74 vdc | 74 vdc | 8 gpm / 30 lpm | 0-120 psi / 0-8 bar | 18 amps | 9.8 x 8.5 x 8.7 in / 249 x 216 x 221 mm |
| 2 | 61996-39 | 7 gpm 90 psi Marine Fuel Pump | 230/460 vac | 7 gpm / 27 lpm | 90 psi / 6 bar | 28 amps | 8 x 8.5 x 8.9 in / 203 x 216 x 226 mm |
| 5 | 63013-9 | 12 gpm 120 psi Marine Fuel Pump | 230/380/460 vac | 12 gpm / 45 lpm | 120 psi / 8 bar | 28 amps | 10.8 x 9.5 x 8.4 in / 274 x 241 x 213 mm |

Prelube/Oil Pumps

| CLASS | ITEM NO. | DESCRIPTION | INPUT VOLTAGE | FLOW | PRESSURE | MAX. CURRENT | HT. x WD. x DP. (Looking at Ports) |
|-------|----------|-----------------------------------|---------------|------------------|--------------------|--------------|---|
| 1 | 66752-9 | 4 gpm 90 psi VS Oil Pump - 64 vdc | 64 vdc | 4 gpm / 15 lpm | 0-90 psi / 0-6 bar | 8 amps | 8.4 x 8.5 x 8.9 in / 213 x 216 x 226 mm |
| 2 | 63068-19 | 4 gpm 90 psi Oil Pump - 64 vdc | 64 vdc | 4 gpm / 15 lpm | 0-90 psi / 0-6 bar | 8 amps | 8.4 x 8.5 x 8.9 in / 213 x 216 x 226 mm |
| 2 | 63068-49 | 4 gpm 90 psi Oil Pump - 110 vdc | 110 vdc | 4 gpm / 15 lpm | 0-90 psi / 0-6 bar | 8 amps | 8.4 x 8.5 x 8.9 in / 213 x 216 x 226 mm |
| 3 | 64281-69 | 15 gpm 150 psi Oil pump - 24 vdc | 24 vdc | 15 gpm / 57 lpm | 150 psi / 10 bar | 100 amps | 9.4 x 11.3 x 21.6 in / 239 x 287 x 549 mm |
| 3 | 64281-49 | 30 gpm 150 psi Oil pump - 74 vdc | 74 vdc | 30 gpm / 114 lpm | 150 psi / 10 bar | 100 amps | 9.4 x 11.3 x 21.6 in / 239 x 287 x 549 mm |
| 3 | 63373-9 | 30 gpm 150 psi Oil pump - 110 vdc | 110 vdc | 30 gpm / 114 lpm | 150 psi / 10 bar | 150 amps | 10.5 x 12 x 22 in / 267 x 305 x 559 mm |

Coolant Pumps

| CLASS | ITEM NO. | DESCRIPTION | INPUT VOLTAGE | FLOW | PRESSURE | MAX. CURRENT | HT. x WD. x DP. (Looking at Ports) |
|-------|----------|---------------------------|---------------|--------------------|----------------|--------------|--------------------------------------|
| n/a | 65770-19 | 800 gpm 45 psi Water Pump | n/a | 800 gpm / 3028 lpm | 45 psi / 3 bar | n/a | 19 x 14 x 18 in / 483 x 356 x 457 mm |

DEF Pumps

| CLASS | ITEM NO. | DESCRIPTION | INPUT VOLTAGE | FLOW | PRESSURE | MAX. CURRENT | HT. x WD. x DP. (Looking at Ports) |
|-------|----------|---------------------------------|---------------|---------------------|---------------------|--------------|--|
| 1 | 64928-9 | GEN2 DEF Transfer Pump - 24 vdc | 24 vdc | 1.2 gpm / 0-4.5 lpm | 0-60 psi / 0-4 bar | 15 amps | 8.1 x 8.6 x 16.1 in / 206 x 218 x 409 mm |
| 2 | 65820-9 | GEN3 DEF Transfer Pump - 74 vdc | 74 vdc | 0-4 gpm / 0-15 lpm | 0-100 psi / 0-7 bar | 20 amps | 9 x 10.4 x 14.7 in / 229 x 264 x 373 mm |

Other Products

| CLASS | ITEM NO. | DESCRIPTION | INPUT VOLTAGE | FLOW | PRESSURE | MAX. CURRENT | HT. x WD. x DP. (Looking at Ports) |
|-------|----------|-----------------------------|---------------|---------------------|----------------------|--------------|------------------------------------|
| n/a | 64044-9 | 19 gpm Bi-Directional Valve | n/a | 19 gpm / 72 lpm | 45 psi / 3 bar | n/a | 8 x 4 x 4 in / 203 x 102 x 102 mm |
| n/a | 62813-XX | Regulating/ Relief Valves | n/a | 0-20 gpm / 0-76 lpm | 0-200 psi / 0-14 bar | n/a | 2 x 3 x 6.3 in / 51 x 76 x 160 mm |

Paragon Products, LLC

625 Coolidge Drive, Suite 100 Folsom, CA 95630
T: +1 (916) 941-9717 F: +1 (916) 941-9727
E: customerservice@paragonproducts.net
paragonproducts.net