

naylor



Product Guide

made in the UK

Engineered for life

Naylor provides a comprehensive range of high quality, high performance drain, duct, sewer and storm systems for use in the highways, power, utilities, commercial, industrial, housing, rail and agriculture sectors.

An entrepreneurial and modern business, Naylor uses its comprehensive market knowledge to support the delivery of construction and major infrastructure projects all over the country.

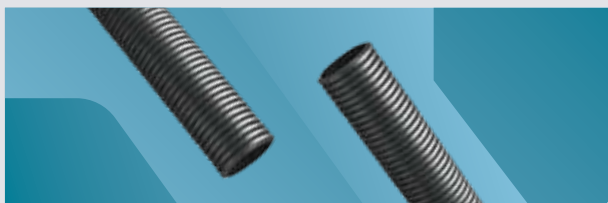
We have a reputation for being straightforward, supportive and easy-to-deal-with and are committed to making significant, ongoing investment in our business to further develop our product offer, reduce our carbon footprint and ensure we continue to meet the needs of our customers.



naylor

Drain	04
Duct	28
Sewer	62
Storm	66
Novoform	74
Deliveries	76
Notes	78

drain



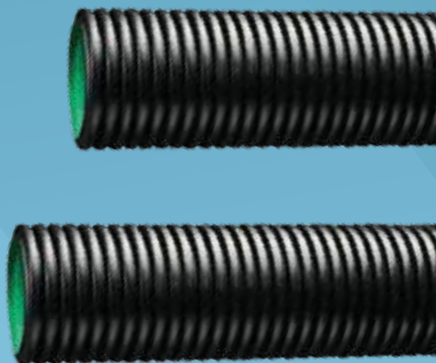
Naylor's range of high performance drain systems comprises MetroDrain, MetroDrain Low Carbon, N-Drain and Land Drain.

Our drain systems are suitable for use in wide range of applications including: highways, rail, infrastructure, commercial and industrial projects, car parks, retail areas, golf courses and sports fields and agricultural projects.

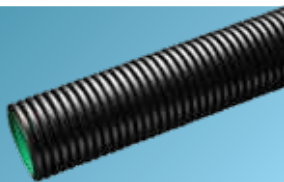
MetroDrain

Perfect for use in environmental water management systems.

- Smooth bore for superior hydraulic flow
- Corrugated outer wall for additional strength
- Available in solid, perforated or half-perforated configuration
- Suitable for cold weather applications
- Light weight for easy transportation, handling and installation
- Excellent impact and abrasion resistance
- Resistance to differential ground settlement
- Recognised alternative to concrete and clayware pipes
- Easy-to-cut to required length and minimal jointing
- HAPAS approved by the BBA



MetroDrain



HDPE Premium Twin Wall Drainage System.

ID (mm)	Nom OD (mm)	Length (m)	Pack Qty	Nom Wt (kg/m)	Code	Cert.
---------	-------------	------------	----------	---------------	------	-------

Solid/plain ended

100	120	6	85	0.9	71301	BBA
150	173	6	33	1.4	71302	BBA
225	265	6	14	3.0	71303	BBA
300	353	6	9	5.0	71304	BBA
375	432	6	5	7.4	71305	BBA
450	518	6	4	10.8	71306	BBA
600	692	6	28/Load	18.6	71307	BBA

Solid/socketed

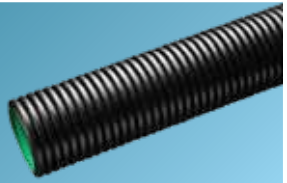
750	918‡	3	36/load	26.8	71363	BBA
900	1093‡	3	16/load	36.0	71364	BBA
1050	1255‡	3	16/load	51.2	71331	-
750	918‡	6	18/load	26.8	71311	BBA
900	1093‡	6	8/load	36.0	71321	BBA
1050	1255‡	6	8/load	51.2	71328	-

‡Nominal OD including socket

Perforated/plain ended

100	120	6	85	0.9	71300	BBA
150	173	6	33	1.4	71312	BBA
225	265	6	14	3.0	71313	BBA
300	353	6	9	5.0	71314	BBA
375	432	6	5	7.4	71315	BBA
450	518	6	4	10.8	71316	BBA
600	692	6	28/Load	18.6	71317	BBA

MetroDrain



HDPE Premium Twin Wall Drainage System.

ID (mm)	Nom OD (mm)	Length (m)	Pack Qty	Nom Wt (kg/m)	Code	Cert.
Perforated/socketed						
750	918‡	3	36/load	26.8	71319	BBA
900	1093‡	3	16/load	36.0	71320	BBA
1050	1255‡	3	16/load	51.2	71329	-
750	918‡	6	18/load	26.8	71319	BBA
900	1093‡	6	8/load	36.0	71320	BBA
1050	1255‡	6	8/load	51.2	71329	-

‡Nominal OD including socket

Half Perforated/plain ended

100	120	6	85	0.9	71301HP	BBA
150	173	6	33	1.4	71322	BBA
225	265	6	14	3.0	73123	BBA
300	353	6	9	5.0	71324	BBA
375	432	6	5	7.4	71375	BBA
450	518	6	4	10.8	71376	BBA
600	692	6	28/Load	18.6	71377	BBA

Half Perforated/socketed

750	918‡	3	36/load	26.8	71381	BBA
900	1093‡	3	16/load	36.0	71327	BBA
1050	1255‡	3	16/load	51.2	71327	-
750	918‡	6	18/load	26.8	71311	BBA
900	1093‡	6	8/load	36.0	71321	BBA
1050	1255‡	6	8/load	51.2	71328	-

‡Nominal OD including socket

Made to order

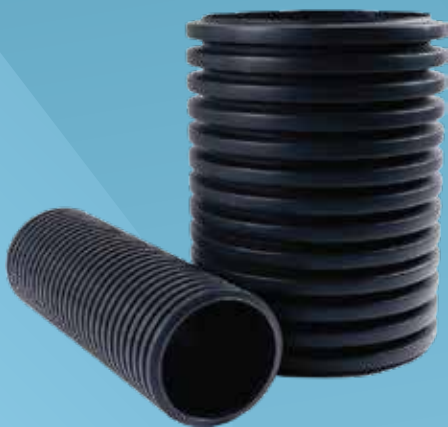
MetroDrain

Low Carbon

All the performance, lower the carbon.

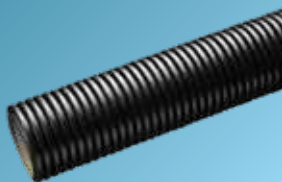
MetroDrain Low Carbon is our newest product in Naylor's drainage range. With all the benefits of the original MetroDrain system, but manufactured with less carbon, the new system has been designed to give customers a more environmentally friendly solution, without losing any of the performance.

MetroDrain Low Carbon is also just as easy to install, handle and transport, and has been through the same stringent testing and certification process.



MetroDrain Low Carbon

HDPE Low carbon Twin Wall
Drainage System



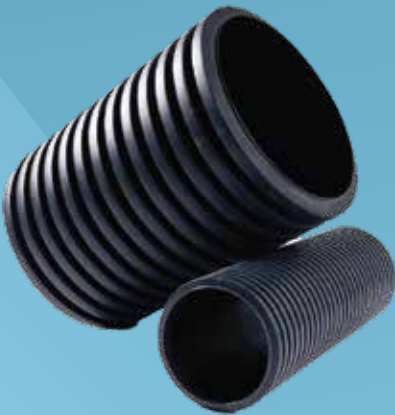
ID (mm)	Nom OD (mm)	Length (m)	Pack Qty	Nom Wt (kg/m)	Code	Cert.
Solid/plain ended						
150	173	6	33	1.6	74202	BBA
225	265	6	14	3.3	74203	BBA
300	353	6	9	5.0	74204	BBA
375	432	6	5	7.4	74205	BBA
450	518	6	4	10.8	74206	BBA
600	692	6	28/Load	21.0	74207	BBA

Performance Testing	Metrodrain	Metrodrain Low Carbon
Material properties & specification	✓	✓
Dimensions	✓	✓
Ring stiffness	✓	✓
Creep ratio	✓	✓
Resistance to longitudinal bending	✓	✓
Impact strength	✓	✓
Rodding resistance	✓	✓
Water jetting	✓	✓
Leaktightness including subject to diameter distortion and angular deflection	✓	✓
BBA Certification	✓	✓

N-Drain

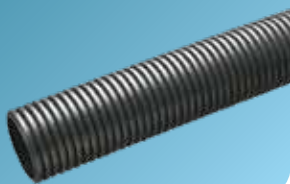
A lighter-duty drainage system where an air test is not required. Suitable for non-BBA applications including agriculture.

- Lighter duty drainage system
- Can be cut to length without the need for special tools
- Competitively priced for agricultural and private use



N-Drain Pipes

HDPE Agricultural Twin Wall
Drainage System



ID (mm)	Nom OD(mm)	Length (m)	Pack Qty	Nom Wt (kg/m)	Code
---------	------------	------------	----------	---------------	------

Solid/plain ended

100	120	6	85	0.6	71107
150	173	6	33	1.1	71260
225	267	6	14	2.5	71076
300	354	6	9	3.9	71075
375	433	6	5	5.6	71117
450	521	6	4	9.1	71118
600	695	6	28/Load	17	71093

Perforated/plain ended

100	120	6	85	0.6	71108
150	173	6	33	1.2	71259
225	267	6	14	2.5	71080
300	354	6	9	3.9	71079
375	433	6	5	5.6	71119
450	521	6	4	9.1	71120
600	695	6	28/Load	17	71121

*Half Perforated subject to minimum quantities and lead time.

Accessories

The following accessories fit our MetroDrain, MertoDrain Low Carbon and N-Drain products.

- T Junctions
- Y Junctions
- Bends
- Level Invert Reducers
- Couplings
- Sealing Rings
- Ribbed Road Gullies
- Yard Gully
- Gully Connection Pipe
- Outlet Adapter
- End Caps
- Lubricant



T Junctions



ID (mm)	Code	Cert.
90° Junctions/socketed		
100 x 100	71406	-
150 x 100	71604	-
150 x 150	71585	BBA
225 x 150	71587	BBA
225 x 225	71588	BBA
300 x 150	71624	BBA
300 x 225	71626	BBA
300 x 300	71628	BBA
375 x 150	71634	BBA
375 x 225	71636	BBA
375 x 300	71638	BBA
375 x 375	71640	BBA
450 x 150	71644	BBA
450 x 225	71646	BBA
450 x 300	71648	BBA
450 x 375	71650	BBA
450 x 450	71652	BBA
600 x 150	71664	BBA
600 x 225	71666	BBA
600 x 300	71668	BBA
600 x 375	71670	BBA
600 x 450	71672	BBA
600 x 600	71674	BBA

ID (mm)	Code	Cert.
90° Junctions/plain ended		
750 x 150	71834	-
750 x 225	71836	-
750 x 300	71838	-
750 x 375	71840	-
750 x 450	71842	-
750 x 600	71844	-
750 x 750	71846	-
900 x 150	71854	-
900 x 225	71856	-
900 x 300	71858	-
900 x 375	71860	-
900 x 450	71862	-
900 x 600	71864	-
900 x 750	71866	-
900 x 900	71868	-
1050 x 150	71884	-
1050 x 225	71886	-
1050 x 300	71888	-
1050 x 375	71890	-
1050 x 450	71892	-
1050 x 600	71894	-
1050 x 750	71896	-
1050 x 900	71898	-
1050 x 1050	71900	-

Large diameter fittings made to order.
Requires sealing rings on all sealed systems/couplers.

Y Junctions



ID (mm)	Code	Cert.
45° Junctions/socketed		
100 x 100	71405	-
150 x 100	71698	-
150 x 150	71581	BBA
225 x 150	71586	BBA
225 x 225	71584	BBA
300 x 150	71623	BBA
300 x 225	71625	BBA
300 x 300	71627	BBA
375 x 150	71633	BBA
375 x 225	71635	BBA
375 x 300	71637	BBA
375 x 375	71639	BBA
450 x 150	71643	BBA
450 x 225	71645	BBA
450 x 300	71647	BBA
450 x 375	71649	BBA
450 x 450	71651	BBA
600 x 150	71663	BBA
600 x 225	71665	BBA
600 x 300	71667	BBA
600 x 375	71669	BBA
600 x 450	71671	BBA
600 x 600	71673	BBA

ID (mm)	Code	Cert.
45° Junctions/plain ended		
750 x 150	71833	-
750 x 225	71835	-
750 x 300	71837	-
750 x 375	71839	-
750 x 450	71841	-
750 x 600	71843	-
750 x 750	71845	-
900 x 150	71853	-
900 x 225	71855	-
900 x 300	71857	-
900 x 375	71859	-
900 x 450	71861	-
900 x 600	71863	-
900 x 750	71865	-
900 x 900	71867	-
1050 x 150	71883	-
1050 x 225	71885	-
1050 x 300	71887	-
1050 x 375	71889	-
1050 x 450	71891	-
1050 x 600	71893	-
1050 x 750	71895	-
1050 x 900	71897	-
1050 x 1050	71899	-

Large diameter fittings made to order.
Requires sealing rings on all sealed systems/couplers.

Bends



ID (mm)	Bend	Code	Cert.
100	11.25	71401	-
100	22.5	71402	-
100	45	71403	-
100	90	71404	-
150	11.25	71351	BBA
150	22.5	71352	BBA
150	45	71353	BBA
150	90	71354	BBA
225	11.25	71563	BBA
225	22.5	71573	BBA
225	45	71583	BBA
225	90	71593	BBA
300	11.25	71504	BBA
300	22.5	71514	BBA
300	45	71524	BBA
300	90	71534	BBA
375	11.25	71505	BBA
375	22.5	71515	BBA
375	45	71525	BBA
375	90	71535	BBA
450	11.25	71506	BBA

ID (mm)	Bend	Code	Cert.
450	22.5	71516	BBA
450	45	71526	BBA
450	90	71536	BBA
600	11.25	71507	BBA
600	22.5	71517	BBA
600	45	71527	BBA
600	90	71537	BBA
†750	11.25	71508	-
†750	22.5	71518	-
†750	45	71528	-
†750	90	71538	-
†900	11.25	71509	-
†900	22.5	71519	-
†900	45	71529	-
†900	90	71539	-
†1050	11.25	71510	-
†1050	22.5	71520	-
†1050	45	71530	-
†1050	90	71540	-

† Plain ended.

Level Invert Reducers



ID (mm)	Code
Socketed	
150 x 100	71701
225 x 100	71702
225 x 150	71703
300 x 100	71704
300 x 150	71705
300 x 225	71706
375 x 150	71708
375 x 225	71709
375 x 300	71710
450 x 150	71712
450 x 225	71713
450 x 300	71714
450 x 375	71715
600 x 150	71717
600 x 225	71718
600 x 300	71719
600 x 375	71720
600 x 450	71721
750 x 150	71742
750 x 225	71743
750 x 300	71744

ID (mm)	Code
Socketed	
750 x 375	71745
750 x 450	71746
750 x 600	71747
900 x 150	71752
900 x 225	71753
900 x 300	71754
900 x 375	71755
900 x 450	71756
900 x 600	71757
900 x 750	71758
1050 x 150	71772
1050 x 225	71773
1050 x 300	71774
1050 x 375	71775
1050 x 450	71776
1050 x 600	71777
1050 x 750	71778
1050 x 900	71779

Outlet Adaptor



OD (mm)	Code
160/178*	67012

Adaptor Coupling

178/172	71700
---------	-------

160mm Outlet Connects to	150mm ID	178mm OD	Twinwall
	150mm ID	178mm OD	Ultra-Rib
	150mm ID	178mm OD	Clayware
	150mm ID	160mm OD	Quantum
	-	160mm OD	PVC-u
	-	160mm OD	Land Drain
	-	160mm OD	Gully Connection Pipe
	-	178mm OD	Gully Connection Pipe

178mm Outlet Connects to	150mm ID	160mm OD	Quantum
	-	160mm OD	PVC-u
	-	160mm OD	Land Drain
	-	160mm OD	Gully Connection Pipe

*Reversible

Ribbed Road Gullies



All Plastic HDPE Gullies are supplied complete with internal trap and rodding eye. Supplied into stock in pack quantities only. 100% recycled.

DN Internal (Nominal)	Internal Depth (Nominal)	DN Outlet (Nominal)	Pack Qty.	Code
450	900	178	20	67003
450	900	160	20	67004
450	750	160	20	67005
450	750	178	20	67009
375	750	178	20	67002

Yard Gully



ID (mm)	Depth (mm)	Capacity (liters)	ID Outlet (mm)	Pack QTY	Code
300	600	29	110	30	67006

Gully Connection Pipe



Diameter (mm)	Length (m)	Pallet Qty	Code
160	25	5	67011
178	25	5	67008

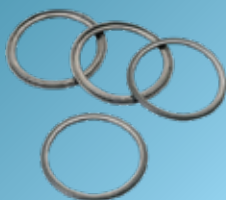
Couplings



ID (mm)	Weight (Kg/m)	Code	Cert.
100	0.16	71340	BBA
150	0.25	71332	BBA
225	1.15	71333	BBA
300	1.98	71334	BBA
375	2.24	71335	BBA
450	3.53	71336	BBA
600	6.32	71337	BBA
750	13.9	71045	BBA
900	20	71047	-
1050	24	71050	-

One coupling and two seals are required per joint.

Sealing Rings



ID (mm)	Material	Code	Cert.
100	EPDM	71341	BBA
150	EPDM	71342	BBA
225	EPDM	71343	BBA
300	EPDM	71344	BBA
375	EPDM	71345	BBA
450	EPDM	71346	BBA
600	EPDM	71347	BBA
750	EPDM	71099	BBA
900	EPDM	71102	BBA
1050	EPDM	71104	-

End Caps



Size (mm)	Code
150	71802
225	71803
300	71804
375	71805
450	71806
600	71807

Lubricant



Size (kg)	Code
1.0	50001
2.5	50002

Suitable for all types of push fit gravity pipe systems. We cannot guarantee the performance of the product if Naylor Lubricant is not used.

Land Drain

Quick and easy to install
with excellent water flow.

- Manufactured from HDPE
- Produced from up to 100% recycled materials
- Available in Kitemarked (BS4962) and non-Kitemarked solutions
- Available in sizes 60mm to 160mm diameter
- Available in coils up to 150m in length
- Available with geotextile wrap
- Suitable for agricultural, sports field and domestic applications



Land Drain



External Dia (mm)	Length (m)	Pack Qty	Code
Perforated – Black			
60	25	9	68029
60	50	8	68032
60	150	5	68033
80	25	9	68034
80	50	7	68035
80	100	4	68036
100	25	7	68037
100	50	6	68038
100	100	4	68039
160	50	4	68007
160†	35	-	68094
Solid – Black			
60	50	8	68042
60	150	5	68043
80	25	9	68048
80	50	7	68053
80	100	4	68049
100	25	7	68050
100	50	6	68044
100	100	4	68045
160	50	4	68009
160†	35	-	68046

Manufactured in accordance with BS4962.

†Scotland only.

Kitemarked Land Drain



Kitemarked to BS4962

External Dia (mm)	Length (m)	Pack Qty	Code	Cert.
-------------------	------------	----------	------	-------

Perforated – Black

60*	50	8	68202	BS
60*	150	5	68204	BS
80*	25	9	68301	BS
80*	50	7	68302	BS
80*	100	4	68303	BS
100*	25	7	68401	BS
100*	50	6	68402	BS
100*	100	4	68403	BS
160*	50	4	68502	BS

Solid – Black

60*	150	5	68214	BS
80*	100	4	68313	BS
100*	100	4	68413	BS
160*	50	4	68512	BS

Wrapped Land Drainage

Geotextile wrapped land drainage coil prevents ingress of very fine particles, such as sand and sediment



External Dia (mm)	Length (m)	Pack Qty	Code
-------------------	------------	----------	------

Perforated

80	50	5	68077
100	50	5	68118
160	50	3	68119

Land Drain Universal Fittings



Description	Pack Qty	Code
60/80/100 Multi Junction	50	68064
60/160 Multi Junction	10	68061

Land Drain Connectors



External Dia. (mm)	Code
60	68086
80	68087
100	68062
160	68063

End Caps



External Dia (mm)	Code
60	68090
80	68088
100	68091
160	68109

Catchpits & Inspection Chambers

Above ground access for inspection and maintenance of surface water pipe systems

- Single piece, pre-assembled chambers.
- Durable rotational moulded LLDPE base - chemical and impact resistant.
- Compatible with 150mm Naylor Metrodrain Twinwall.
- Profiled base which improves overall strength.
- Stepped base - 50mm step from side to main channel.
- Chambers include a fall from the main inlet to the outlet to help promote flow.
- Base and five standard depths available.
- Access shafts are easily cut onsite to the required depth.
- Chambers can be installed in granular backfill.



Catchpit Chambers



Product	Pipework Options	Diameter (mm)	Overall Depth (mm)	Inlet Invert (mm)	Pallet Qty	Code
Base	150 - 160 MetroDrain	450	730	440	8	71381
8 Base + 8 Seal	150 - 160 MetroDrain	450	-	-	n/a	71384

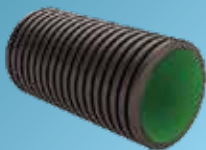
Product	Size (mm)	Pallet Qty	Code
Seal	450	n/a	71382
Restriction cap	450-350	n/a	71383
Seal	650	n/a	71391
Restriction cap	600-300	n/a	71392

Inspection Chambers



Product	Pipework Options	Diameter (mm)	Overall Depth (mm)	Inlet Invert (mm)	Pallet Qty	Code
Base	150 dia	450	500	443	8	71385
12 Base + 12 Seal	150 dia	450	-	-	n/a	71387
Base	150 dia	450	538	498	8	71390
6 Base + 6 Seal	150 dia	450	-	-	n/a	71394

Access Shaft



Diameter (mm)	Length (m)	Pallet Qty	Code
450	0.75	4	71386/0.75
450	1.5	2	71386/1.5
450	3	2	71386/3
600	0.75	2	71396/0.75
600	1.5	2	71396/1.5
600	3	n/a	71396/3



duct



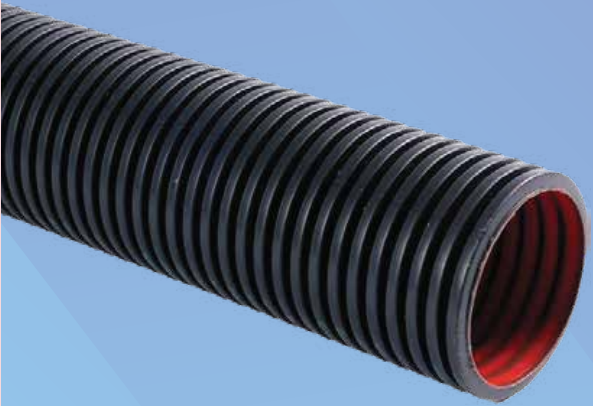
Naylor offer a technically advanced and comprehensive range of ducting systems. With production facilities in both England and Scotland we are well placed to meet the needs of civils, utility, telecoms markets and others.

The Naylor ducting system comprises three main components: ducting pipes, access chambers, covers and frames.

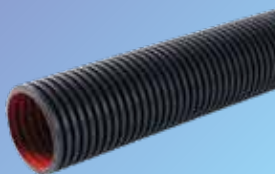
Certain Naylor 50-150mm ducting ranges are manufactured to BBA and BS EN61386 as required by the Highways Agency.

MetroDuct Twin Wall

Class 1 & 2
Duct



Class 1 Twin Wall PP Duct (HV)



For applications over 33KV

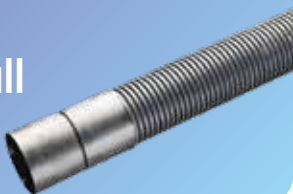
ID (mm)	OD (mm)	Cert.	Weight (kg/m)	Length (m)	Pack Qty	Code
100mm	120mm	ENATS 12/24	1.2	6	85	29526
125mm	145mm	ENATS 12/24	1.4	6	72	29626
150mm	178mm	ENATS 12/24	1.7	6	33	29726

Class 1 Twin Wall Bends



ID (mm)	OD (mm)	Angle	Radius (m)	Code
100mm	120mm	11.25	1.2	29800
100mm	120mm	11.25	3.9	29802
100mm	120mm	22.5	1.2	29803
100mm	120mm	22.5	3.9	29805
100mm	120mm	45	1.2	29807
125mm	145mm	11.25	3.9	29812
125mm	145mm	22.5	3.9	29815
125mm	145mm	45	1.2	29817
150mm	178mm	11.25	1.2	29820
150mm	178mm	11.25	3.9	29822
150mm	178mm	22.5	1.2	29823
150mm	178mm	22.5	3.9	29825
150mm	178mm	45	1.2	29827

Class 2 HDPE Twin Wall Duct (LV)



For applications up to 20KV

ID (mm)	OD (mm)	Cert.	Length (m)	Pack Qty	Code
100mm	120mm	ENATS 12/24	6	85	29516
100mm	120mm	ENATS 12/24	3	72	29513
125mm	145mm	ENATS 12/24	6	72	29616
150mm	178mm	ENATS 12/24	6	33	29716
150mm	178mm	ENATS 12/24	3	33	29713

Class 2 Twin Wall Bends



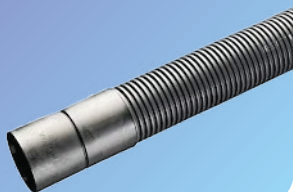
ID (mm)	OD (mm)	Angle	Radius (m)	Code
100mm	120mm	11.25	2.4	29842
100mm	120mm	22.5	2.4	29847
100mm	120mm	45	0.45	29851
100mm	120mm	90	0.45	29856
125mm	145mm	11.25	2.4	29861
125mm	145mm	22.5	2.4	29866
125mm	145mm	45	0.6	29871
125mm	145mm	90	0.6	29876
150mm	178mm	11.25	2.4	29882
150mm	178mm	22.5	2.4	29887
150mm	178mm	45	0.6	29891
150mm	178mm	90	0.6	29896

MetroDuct

HDPE Utility Duct



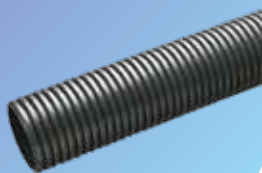
HDPE Utility Twin Wall



Electric Black

ID/OD (mm)	Length (m)	Pack Qty	Weight (Kg/m)	Code	Cert.
Printed - Electric Cable Duct					
94/110	6	100	3.6	29120	BBA
100/120	6	85	3.9	29278	BBA
125/145	6	72	5.5	29111	BBA
137/160	6	33	6.1	29119	BBA
150/178	6	33	7.9	29112	BBA

HDPE Utility Twin Wall Sealed System

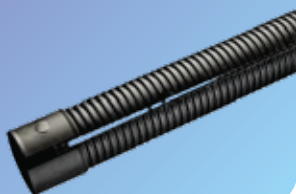


Electric Black Plain Ended

ID/OD (mm)	Length (m)	Pack Qty	Code
94/110	6	100	29007
100/120	6	85	29388
150/178	6	33	29370

For sealed system 2 sealing rings required per 6m length.

Twin Wall Split Duct



C/W Dowels or ties as appropriate

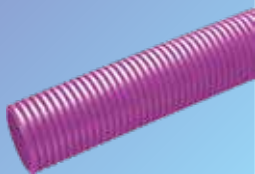
ID/OD (mm)	Length (m)	Pack Qty	Code
94/110	3	100	29070
100/120	3	85	29081
125/145	3	72	29242
150/178	3	33	29223

Made to order, subject to a lead time.



HDPE Utility Twin Wall Sealed System

Plain Ended
Motorway Communication



ID/OD (mm)	Length (m)	Pack Qty	Code	Cert.
94/110	6	100	29046	BBA
100/120	6	85	29364	BBA
150/178	6	33	29420	BBA

For sealed system 2 sealing rings required per 6m length.

HDPE Utility Twin Wall Coiled

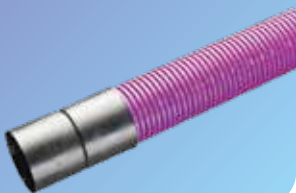
Electric Black



ID/OD (mm)	Length (m)	Colours	Pallet Qty	Code	Cert.
Printed Electric Cable Duct					
50/63	50	Black	8	29113	BS
94/110	50	Black	5	29267	BS
137/160	25	Black	7	29268	BS
137/160	50	Black	4	29092	BS

Coils supplied with pre-installed draw string.

HDPE Utility Twin Wall



Motorway Communication

ID/OD (mm)	Length (m)	Pack Qty	Weight (Kg/m)	Code	Cert
94/110	6	100	3.6	29043	BBA
100/120*	6	85	3.9	29200	BBA
137/160	6	33	6.7	29249	BBA
150/178	6	33	7.2	29059	BBA

*Made to order

HDPE Utility Twin Wall Coiled



Motorway Communication

ID/OD (mm)	Length (m)	Pallet Qty	Code	Cert
50/63	50	8	29279	BS
94/110	50	5	29280	BS
137/160*	50	4	29019	BS

Coils supplied with pre-installed draw string.

*Made to order

HDPE Utility Twin Wall



Street Lighting/Traffic Signal

ID/OD (mm)	Length (m)	Marked	Pack Qty	Code	Cert
50/63*	6	SL	158	29087	BBA
50/63*	6	TS	158	29086	BBA
94/110	6	SL	100	29085	BBA
94/110	6	TS	100	29084	BBA
94/110	6	Plain	100	29042	BBA
100/120*	6	SL	85	29083	BBA
100/120*	6	TS	85	29082	BBA
100/120*	6	Plain	85	29052	BBA
137/160*	6	SL	33	29198	BBA
137/160*	6	TS	33	29189	BBA
137/160*	6	Plain	33	29197	BBA
150/178	6	SL	33	29061	BBA
150/178	6	TS	33	29356	BBA
150/178*	6	Plain	33	29357	BBA

*Subject to minimum order quantity and lead time.

HDPE Utility Twin Wall Coiled

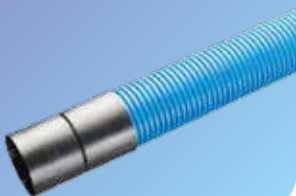


Street Lighting/Traffic Signal

ID/OD (mm)	Length (m)	Marked	Pallet Qty	Code	Cert.
50/63	50	SL	8	29091	BS
50/63	50	TS	8	29090	BS
50/63	50	Plain	8	29037	-
94/110	50	SL	5	29089	BS
94/110	50	TS	5	29088	BS
94/110	50	Plain	5	29047	-
137/160*	50	SL	4	29135	BS
137/160*	50	TS	4	29348	BS
137/160*	50	Plain	4	29124	-

*Subject to minimum order quantity and lead time.

HDPE Utility Twin Wall



Utility – Water

ID/OD (mm)	Length (m)	Pack Qty	Code	Cert.
Blue				
94/110	6	100	29110	BBA
100/120*	6	85	29350	BBA
137/160	6	33	29241	BBA
150/178	6	33	29355	BBA
225/266+	6	14	29413	-
300/353+	6	9	29414	-
450/518+	6	4	29434	-

*Subject to minimum order quantity and lead time.

+Plain Ended

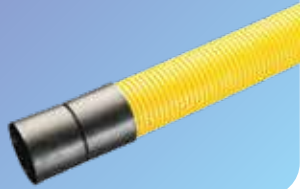
HDPE Utility Twin Wall Coiled



Utility – Water

ID/OD (mm)	Length (m)	Pallet Qty	Code	Cert.
50/63	50	8	29039	BS
94/110	50	5	29049	BS

HDPE Utility Twin Wall



Utility – Gas

ID/OD (mm)	Length (m)	Pack Qty	Code	Cert.
Yellow				
94/110	6	100	29045	BBA
100/120*	6	85	29349	BBA
137/160	6	33	29244	BBA
150/178	6	33	29358	BBA
225/266+	6	14	29411	-
300/353+	6	9	29412	-
450/518+	6	4	29437	-
Yellow Perforated				
150/178	6	33	29431	-
225/266	6	14	29424	-
300/353	6	9	29427	-
450/518	6	4	29436	-

*Subject to minimum order quantity and lead time.

+Plain Ended

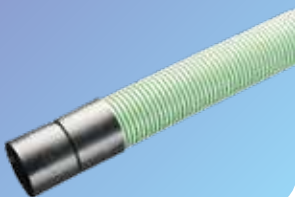
HDPE Utility Twin Wall Coiled



Utility – Gas

ID/OD (mm)	Length (m)	Pallet Qty	Code	Cert.
50/63	50	8	29040	BS
94/110	50	5	29050	BS

HDPE Utility Twin Wall



Utility – CCTV

ID/OD (mm)	Length (m)	Pack Qty	Code	Cert.
Green				
94/110	6	100	29281	BBA
100/120*	6	85	29351	BBA
137/160*	6	33	29250	BBA
150/178	6	33	29359	BBA

HDPE Utility Twin Wall Coiled



Utility – CCTV

ID/OD (mm)	Length (m)	Pallet Qty	Code	Cert.
50/63	50	8	29094	BS
94/110	50	5	29171	BS

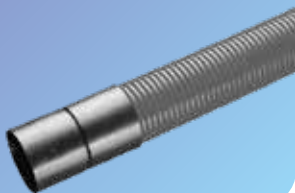
Note:

Coils supplied with pre-installed twine and coupling. Other colours available subject to a minimum order quantity and lead time.

* Subject to minimum order quantity and lead time.

+ Please Note: Pipe supplied plain ended - order couplings separately .

HDPE Utility Twin Wall



Utility – Telecommunications

ID/OD (mm)	Length (m)	Pack Qty	Code	Cert.
------------	------------	----------	------	-------

Grey

94/110*	6	100	29238	BBA
150/178*	6	33	29396	BBA

* Subject to minimum order quantity and lead time.

HDPE Utility Twin Wall



Unprinted

ID/OD (mm)	Length (m)	Pack Qty	Code	Cert.
------------	------------	----------	------	-------

Red

94/110	6	100	29170	BBA
--------	---	-----	-------	-----

HDPE Twin Wall Bends



ID/OD (mm)	11 ¼° Code	22 ½° code	45° Code	90° Code
------------	------------	------------	----------	----------

94/110	29144	29141	29138	29149
100/120	29215	29174	29164	29159
125/145	29243	29165	29166	29156
137/160	29022	29180	29181	29182
150/178	29262	29183	29163	29162

Supplied plain ended.
Order couplings separately.

Couplings



ID/OD (mm)	Code	Weight	Cert.
63	29104	0.04kg	BBA
110	29225	0.17kg	BBA
120	29101	0.18kg	BBA
145	29100	0.27kg	BBA
160	29099	0.23kg	BBA
178	29098	0.26kg	BBA

Sealing Rings



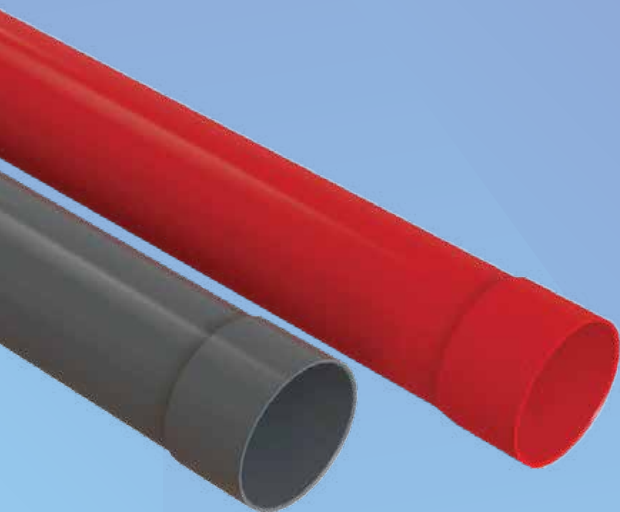
Diameter (mm)	Code
63	29114
110	29107
120	29115
145	29354
160	29106
178	29117

For sealed system 2 sealing rings required per 6m length.

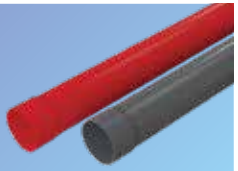


MetroDuct Smooth

Class 1 & 2
uPVC Duct



Class 1 uPVC (HV)



For applications over 33KV (up to 132KV)
Fully compliant with ENATS 12/24

OD (mm)	Length (m)	Pack Qty	Weight (kg)	Black Code (RAL 7021)	Red Code (RAL 3020)
110	3	90	2.0	30111	30110
110	6	90	2.0	30112	30113
160	3	39	4.0	30162	30160
160	6	39	4.0	30163	30161

Supplied with blown socket

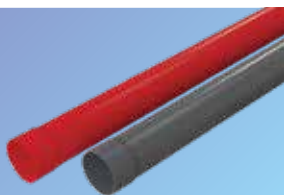
Class 1 uPVC bends



OD (mm)	Angle (°)	Radius (m)	Pack Qty	Black Code (RAL 7021)	Red Code (RAL 3020)
110	11.25	1.2	30	36121	36101
110	11.25	3.5	10	36103	36123
110	22.5	1.2	30	36112	36102
110	22.5	1.75	10	36104	36124
110	45	1.2	25	36115	36105
110	90	1.2	25	36116	36106
160	11.25	1.2	30	36261	36161
160	11.25	3.9	39	36165	36265
160	22.5	1.2	30	36262	36162
160	22.5	3.9	39	36166	36266
160	45	0.56	5	36167	36267
160	45	1.2	30	36263	36163
160	90	1.2	25	36268	36164

Class 2 uPVC (LV)

For applications up to 20KV
Fully compliant with ENATS 12/24



OD (mm)	Length (m)	Pack Qty	Black Code (RAL 7021)	Red Code (RAL 3020)
38	6	570	30073	-
38	3	570	30071	30070
96.5	6	115	30098	30099
96.5	3	115	30091	30090
110	6	90	30083	30081
110	3	90	30082	30080
160	6	39	30266	30265
160	3	39	30261	30260

Supplied with blown socket

Class 2 uPVC bends



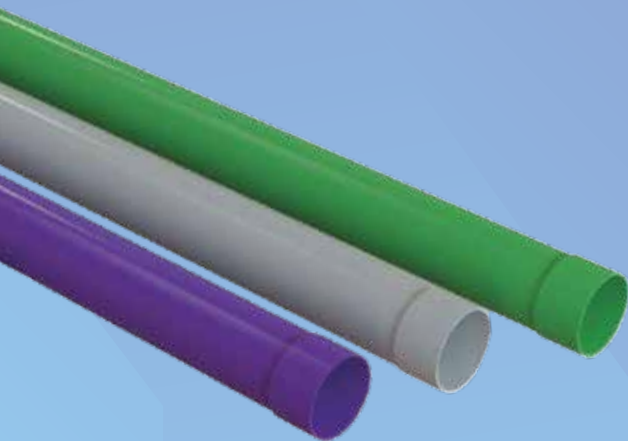
OD (mm)	Angle (°)	Radius (m)	Pack Qty	Black Code (RAL 7021)	Red Code (RAL 3020)
38	11.25	0.4	50	36305	36301
38	22.5	0.4	50	36306	36302
38	45	0.4	50	36307	36303
38	90	0.4	50	36308	36304
54	11.25	0.35	60	36421	-
54	22.5	0.35	60	36412	-
54	45	0.35	75	36423	-
54	45	1.5	15	36413	-
54	90	0.35	15	36424	-
54	90	1.1	15	36414	-
96.5	11.25	0.7	10	36605	36601
96.5	22.5	0.7	10	36606	36602
96.5	45	0.35	15	36607	36603
96.5	90	0.427	10	36608	36604
110	11.25	1.2	10	36114	36110
110	22.5	1.2	50	36112	36111
110	45	1.2	50	36134	36105
110	90	1.2	50	36117	36106
160	11.25	1.2	30	36175	36161
160	22.5	1.2	30	36176	36162
160	45	1.2	30	36177	36163
160	90	1.2	25	36178	36164



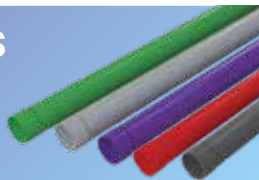
T C1 NAYLOR 160mm

MetroDuct Smooth

Telecoms / uPVC
Duct



uPVC Telecoms Duct



Complies with manufacturing and test requirements of ENA TS 12-24 450N class at 50C degrees

OD (mm)	Length (m)	Pack Qty	Grey Code (RAL 7046)	Green Code (RAL 6024)	Purple Code (RAL 4001)
54	6	369	30404	30344	-
54	3	369	30202	30203	30204
96.5	6	115	30095	30096	30097
96.5	3	115	30092	30093	30094
110	6	90	30085	30087	30089
110	3	90	30084	30086	30088
160	6	39	30267	30268	30269
160	3	39	30262	30263	30264

Supplied with blown socket

uPVC Telecoms Duct Bends



OD (mm)	Angle (°)	Radius (m)	Pack Qty	Grey Code	Green Code	Purple Code
54	11.25	0.35	60	36401	36405	36409
54	22.5	0.35	60	36402	36406	36410
54	45	0.35	75	36403	36407	36411
54	90	0.35	15	36404	36408	36412
96.5	11.25	0.7	15	36609	36613	36617
96.5	22.5	0.7	15	36610	36614	36618
96.5	45	0.35	15	36611	36615	36619
96.5	90	0.427	10	36616	36624	36620
110	11.25	1.2	10	36118	36122	36126
110	22.5	1.2	50	36119	36127	36127
110	45	1.2	50	36120	36138	36128
110	90	1.2	50	36136	36125	36129
160	11.25	1.2	30	36179	36183	36187
160	22.5	1.2	30	36180	36184	36188
160	45	1.2	30	36181	36185	36189
160	90	1.2	25	36182	36186	36190

Double Socket Couplers



ID (mm)	Length (mm)	Colour	Code
54	100	Grey	36400
96.5	200	Grey	36600
96.5	200	Green	36621
110	200	Black	36100
160	300	Black	36700
110	200	Red	36109
160	300	Red	36701

End Caps (PE)

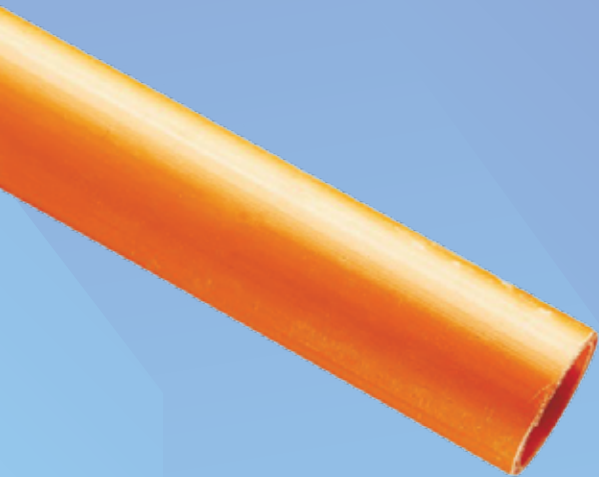


ID (mm)	Length (mm)	Colour	Code
54	28.4	Yellow	36430
96.5	36	Yellow	36630
110	39	Yellow	36230
160	40	Yellow	36170



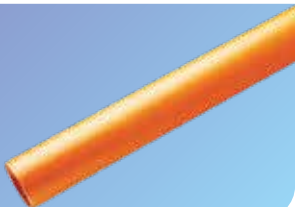
MetroDuct Smooth

Lighting Traffic Signal
Sub Duct



Lighting Duct

Suitable for street lighting and traffic signal cables



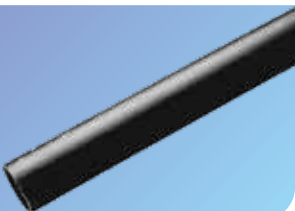
ID/OD (mm)	Length (m)	Marked	Pack Qty	Code
53/63*	6	SL	288	38028
97/107	6	SL	76	38091
53/63*	6	TS	288	38059
97/107	6	TS	76	38030

Supplied with a coupler. Extra couplings to be ordered separately.

*Subject to minimum order quantity and lead time.

Sub-Duct – Electric Cable

Complies with ENATS 12-24 class 3 standard.



ID/OD (mm)	Length (m)	Weight (kg/m)	Pack Qty	Code
32/37	25	2.5	15	38020
32/37	50	2.5	8	38023
32/37	100	2.5	5	38024
38/44	25	3	15	38021
38/44	50	3	8	38025
38/44	100	3	5	38026
50/60	25	5	12	38033
50/60	50	5	8	38034

PE Smooth internal and external. Colour Black.

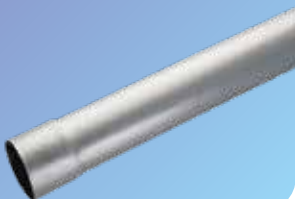
Coils supplied plain ended and couplers can be made to special order and a minimum order quantity applies.

MetroDuct Smooth

General Purpose
Duct



General Purpose Duct



OD (mm)	Length (m)	Pack Qty	Code
54 (2")	6	369	30052
88.9 (3")	6	138	30053
110	6	80	30010
114 (4")	6	76	30054
160	6	39	30022
168 (6")	6	39	30055
200	6	25	30056

General Purpose Duct Connectors



Diameter (mm)	Pack Qty	Code
54 (2")	1	36050
88.9 (3")	1	36049
114 (4")	1	36048
168 (6")	1	36047
200	1	36046

Supplied into stock in bag quantities only.

General Purpose Duct Bends



OD(mm)	Pack Qty	11 ¼° Code	22 ½° code	45° Code	90° Code
54 (2")	1	36054	36058	36071	36073
88.9 (3")	1	36053	36057	36078	36074
114 (4")	1	36052	36056	36079	36075
168 (6")	1	36051	36055	36080	36076
200	1	-	-	36081	36077

MetroDuct Single Wall



HDPE Single Wall Ducting



OD (mm)	Length (m)	Code	Cert.
---------	------------	------	-------

Street Lighting Scotland - Purple

35	25	M68027	BS
60	100	M68006	BS
100	40	M68001	BS
160	30	M68110	BS

HDPE Single Wall Ducting



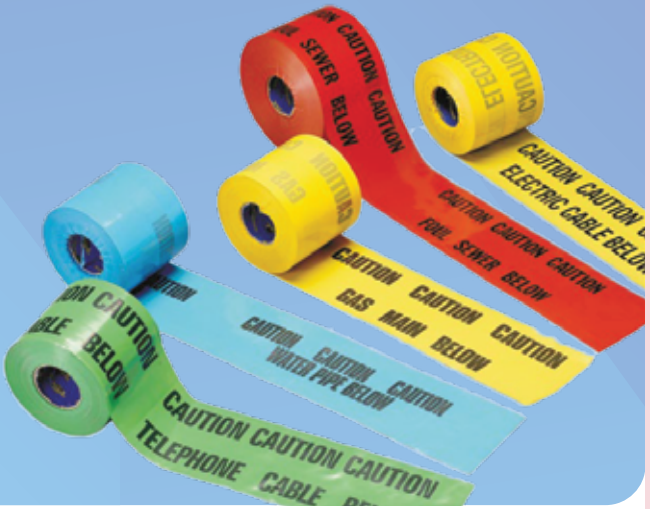
Yellow Perforated Gas pipe -
Kitemarked to BS4962

OD (mm)	Length (m)	Pack Qty	Code	Cert.
---------	------------	----------	------	-------

Yellow Perforated

60	50	8	68075	BS
60	150	5	68074	BS
80	25	9	68073	BS
80	50	7	68072	BS
80	100	4	68071	BS
100	25	7	68070	BS
100	50	6	68069	BS
100	100	4	68068	BS
160	50	4	68066	BS

Duct Accessories



Access Chamber



Clear opening Width (mm)	Clear opening Length (mm)	Depth (mm)	Pallet Qty	Code
300	300	330	18	69224
300	450	330	18	69225
450	450	330	24	69226
450	600	330	18	69227
600	600	330	13	69228

Supplied fully assembled or flat packed.

Covers & Frames



Dimensions (mm)	Code
300x300	69128
300x450	69129
450x450	69127
450x600	69126
600x600	69125

Duct Spacer



Description	Size	Code
4 Way	110	29230
4 Way	120	29375
4 Way	150	29399
6 Way	110	29228
6 Way	150	29231
8 Way	150	29235

End Caps



Diameter (mm)	Code
63	29131
110	29129
120	29128
145	29127
160	29126
178	29168

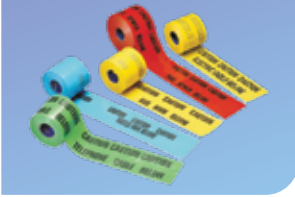
Draw Cord



Size (Kg)	Code
220 Metre Coil	29264
500 Metre Drum	29191

Nominal 5kN Breaking Strength. 6mm cord.

Marker Tape



Service	Colour	Code
Electric Cable	Yellow	34036
Water Main	Blue	34037
Gas Main	Yellow	34038
Telephone Cable	Green	34039
Foul Sewer	Red	34040
Street Lighting	Yellow	34041

365m Rolls.

Lubricant



Size (Kg)	Code
1.0	50001
2.5	50002

Suitable for all types of push fit gravity pipe systems. We cannot guarantee the performance of the product if Naylor Lubricant is not used.

Reducers – Scotland



OD (mm)	Colour	Code
100x60	Black	68008

Junction Box – Scotland



OD (mm)	Colour	Code
105	Black	M68132

Junctions Boxes Scotland

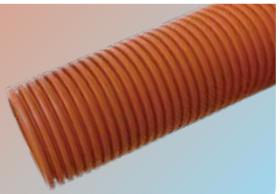
sewer



Naylor's MetroSewer range has been designed to ensure complete peace of mind in sewer applications that need to meet the rigorous testing requirements of the water industry.

Made from durable, high quality twin wall polypropylene, MetroSewer products are designed for adoptable sewer applications and Kitemarked to BS EN 13476-3 (piping systems for non-pressure underground drainage and sewerage) and WIS 4-35-01 (specification for thermoplastics structured wall pipes – supplementary test requirements).

MetroSewer Pipe



ID (mm)	Nom OD (mm)	Length (m)	Pack Qty	Nom Wt (kg/m)	Code	Cert.
150	173	3	33	1.7	73101	BS
225	266	3	14	4.3	73102	BS
300	353	3	9	7.6	73103	BS

Junctions



Size (mm)	Angle (°)	Code	Cert.
150x150	45	73401	BS
150x150	90	73402	BS
225x150	45	73405	BS
225x225	45	73403	BS
300x150	45	73411	BS
300x225	45	73407	BS
300x300	45	73409	BS

Couplings



ID (mm)	Length (mm)	Pack Qty	Code	Cert.
150mm	176mm	1	73121	BS
225mm	284mm	1	73122	BS
300mm	353mm	1	73123	BS

Bends



ID (mm)	Angle (°)	Radius (mm)	Pack Qty	Code	Cert.
150mm	15	79	1	73115	BS
150mm	30	79	1	73130	BS
150mm	45	79	1	73145	BS
150mm	90	155	1	73190	BS
225mm	15	119	1	73215	BS
225mm	30	119	1	73230	BS
225mm	45	119	1	73245	BS
225mm	90	208	1	73290	BS
300mm	15	158	1	73315	BS
300mm	30	158	1	73330	BS
300mm	45	158	1	73345	BS
300mm	90	266	1	73390	BS

End Caps



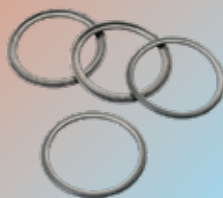
ID (mm)	Material	Pack Qty	Code
150mm	HDPE	1	73601
225mm	HDPE	1	73602
300mm	HDPE	1	73603

Invert Level Reducers



ID (mm)	OD (MM)	Pack Qty	Code
150mm	110mm	1	73501
150mm	160mm	1	73502
225mm	150mm	1	73503
300mm	225mm	1	73504

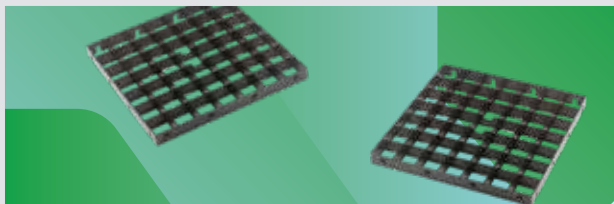
Sealing Rings



ID (mm)	Material	Pack Qty	Code	Cert.
150	EPDM	1	71342	BBA
225	EPDM	1	71343	BBA
300	EPDM	1	71344	BBA

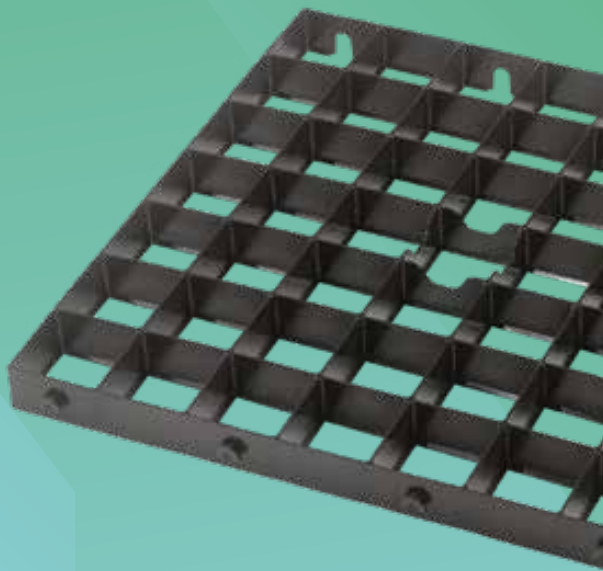
Two seals are required per joint

storm

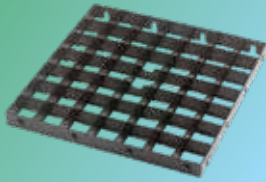


We designed our environmental and sustainable urban drainage solutions (SuDS) to mimic the way that water drains in the natural world, so that water run-off can more effectively be managed in different commercial and domestic spaces.

GroundGrid



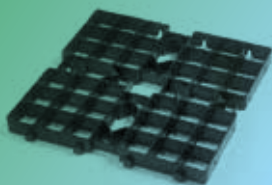
GroundGrid



Description

Naylor Product Code	65110
Unfilled Load Bearing Capacity (Tonnes/m ²)	150
Filled Load Bearing Capacity (Tonnes/m ²)	800
Nominal Installed Size (mm)	481x481x40
Nominal Cell Size (mm)	66x66
Grids/m ²	4.32
Infill Volume/m ²	0.034m ³
Weight (kg)	0.7 (2.98 kg/m ²)
Infiltration (mm/hr)	>5000
Colour	Black
Material	Recycled HDPE/PP
Chemical Resistance	Excellent
UV Resistance	High
End Life	Recyclable
Connection Type	Side lugs and slots
Demarcation Block Compatibility	✓
Country Of Manufacture	UK
Pallet Details	48 pallets/load (1,340m ²)
Full Load Details	120/pallet (27.8m ²) 1 x 1 x 1.2m (110kg)

GroundGrid Plus



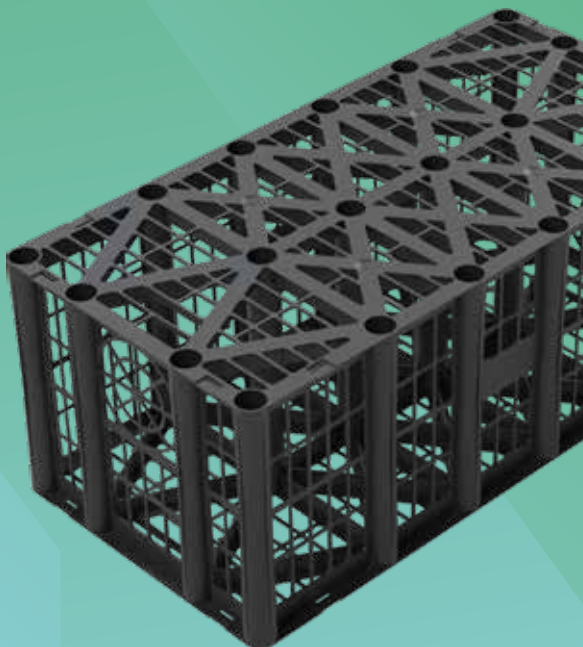
Description

Naylor Product Code	65111PLUS
Unfilled Load Bearing Capacity (Tonnes/m ²)	320
Filled Load Bearing Capacity (Tonnes/m ²)	1000
Nominal Installed Size (mm)	500x500x40
Nominal Cell Size (mm)	68x68
Grids/m ²	4
Infill Volume/m ²	0.035m ³
Weight (kg)	1.2 (4.8 kg/m ²)
Infiltration (mm/hr)	>5000
Colour	Black
Material	Recycled HDPE/PP
Chemical Resistance	Excellent
UV Resistance	High
End Life	Recyclable
Connection Type	Side lugs and slots
Demarcation Block Compatibility	✓
Country Of Manufacture	UK
Full Load Details	48 pallets/load (1440m ²)
Pallet Details	120/pallet (30m ²) 1 x 1 x 1.2m (170kg)

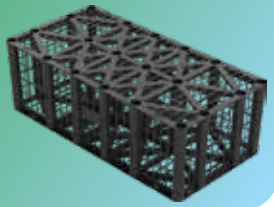
AquaVoid^{Home}

AquaVoid^{HOME} modular attenuation cells manage excessive rainfall allowing surface water to be stored and gradually released back to the ground or drainage network.

These cells are injection moulded and manufactured from recycled material. AquaVoid^{HOME} is to be installed in domestic, landscaped areas only.



AquaVoid^{Home}



- Suitable only for non-trafficked areas and domestic applications
- Made with 100% recycled polypropylene
- Compatible with 110mm and 160mm Land Drain

Dimensions (m)	1m (L) x 0.5m (W) x 0.4m (H)
Weight (kg)	6.8kg
Vertical Loading (tonnes/m ²)	20 tonnes
Minimum Cover (m)	0.5m
Maximum Cover (m)	2.7m
Void Ratio	96%
Volume (litres)	192 litres
Inlet Size (mm)	110mm, 160mm

Code	Description
65204	Crate (Pre-constructed) w/ Shear Connectors and Clips
65201	Pallet x 15 (15x crates, 30 connectors, 100 clips)
65202	Sheer Connectors - 220mm long)
65232	AquaVoid Home Clips (6 per crate)

SmartSponge



Smart Gully Adaptor (SGA)



Code	Description
66500	Smart Gully Adapter for Concrete Gully + Smart Pak
66502	Smart Gully Adapter for Plastic Gully + Smart Pak

Passive Skimmers



Code	Dimensions (mm)	Pack Qty
66300	330x330	40
66302	457x457	20
66304	686x686	10

Smart Filter Chamber

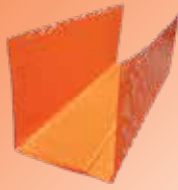


Code	Dimensions (m)	Max flow (l/s)
66406PE	1.5x1x1	44
66407PE	1.5x1x1	88
66408PE	2x1x1.8	130

Novoform



Permanent Formwork



Width (mm)	Length (mm)	Code	Width (mm)	Length (mm)	Code
300	2400	NOV0300F-OPN	1500	2400	NOV1500F-OPN
450	2400	NOV0450F-OPN	1575	2400	NOV1575F-OPN
525	2400	NOV0525F-OPN	1650	2400	NOV1650F-OPN
600	2400	NOV0600F-OPN	1725	2400	NOV1725F-OPN
675	2400	NOV0675F-OPN	1800	2400	NOV1800F-OPN
750	2400	NOV0750F-OPN	1875	2400	NOV1875F-OPN
825	2400	NOV0825F-OPN	1950	2400	NOV1950F-OPN
900	2400	NOV0900F-OPN	2100	2400	NOV2100F-OPN
1050	2400	NOV1050F-OPN	2250	2400	NOV2250F-OPN
1350	2400	NOV1350F-OPN	2400	2400	NOV2400F-OPN
1425	2400	NOV1425F-OPN	2700	2400	NOV2700F-OPN

Bent and preformed options are available, cutting and bending at an additional cost.

Deliveries

Delivery Times

All standard deliveries are made between the hours of 8am and 4pm unless advised at the time of order.

Timed and out of hours deliveries are available for an extra charge.

Delivery Discrepancies

Claims for transit damage or shortage cannot be accepted unless advised within 72 hours of unloading by email to queries@naylor.co.uk.

Claims reported after 72 hours will not be accepted.

Vehicle Waiting Time

It is a condition of every delivery that when the vehicle reaches its destination, the customer shall unload promptly.

In the event of delays, a waiting time charge will apply as per our standard terms and conditions.

If a vehicle is waiting in excess of 1 hour for the customer to commence unloading, penalty charges will be added to the invoice.

Please see our website for a copy of our Terms & Conditions.



Contact

Sales Enquiries (England, Wales)

help@naylor.co.uk

0330 056 3355 Opt. 2

Orders, Delivery and Fullfilment (England, Wales)

orders@naylor.co.uk

0330 056 3355 Opt. 1

Sales Enquiries (Scotland)

scotland@naylor.co.uk

01592 717900

Orders, Delivery and Fullfilment (Scotland)

scotland@naylor.co.uk

01592 717900

Aftersales Service

queries@naylor.co.uk

0330 056 3355 Opt. 1

Proof of Delivery Requests

pods@naylor.co.uk

Power Enquiries

powerduct@naylor.co.uk

0330 056 3355 Opt. 2

Direct to Site Enquiries

directsales@naylor.co.uk

0330 056 3355 Opt. 2

England Office

help@naylor.co.uk
0330 0563355

Clough Green, Cawthorne,
Barnsley, South Yorkshire,
S75 4AD

Scotland Office

scotland@naylor.co.uk
01592 717900

Off Sea Road, Methil,
Leven, Fife, KY8 3DE



Engineered for life