

SKF

From Bearing to Sharing: SKF's #railvolutionary Approach



Step into the world of critical railway operations, where precision and reliability are always paramount. SKF, a global leader in bearings and rotating equipment – and a company that knows a thing or two about reliability – stands as a guiding force, helping redefine efficiency across the tracks.

Knowledge sharing is at the core of SKF's mission. As part of its continual output of information into the industry, experts, including SKF leaders, have been sharing invaluable insights in enlightening webinar sessions. But it's not just about keeping people in the know; it's about a commitment to enriching the industry's collective knowledge.

Complementing these insights, the 'Ask an Expert' series features seasoned professionals providing personalised perceptions. Regular #railvolutionary updates through news articles cover diverse topics, from overcoming workforce shortages to strategic partnerships, reflecting SKF's dedication to a holistic approach in rail operations.

SKF is delivering for safe and sustainable rail!

In response to the rail industry's quest for a safer and sustainable future, SKF champions a proactive approach. Going beyond product delivery, the company offers complementary services elevating safety, reliability and profitability. Similarly, on-site bearing exchange services can help to minimise downtime, reduce stock and lower costs, supported by comprehensive installation and decommissioning.

That said, SKF emphasises bearing refurbishment,

reducing waste, energy consumption and emissions by up to 60 percent in some cases, proving that SKF's commitment isn't just a buzzword; it's a hands-on contribution to a greener rail industry.

In Direction of Digital

In a world where rail is not just a mode of transport but a key player in shaping the future of mobility, the integration of digital strategies also becomes paramount. SKF, with an unwavering focus on operational excellence, is at the forefront of creating digital experiences that redefine the landscape for both the company and its customers.

Around the globe, rail operators and fleet owners are on a trajectory of digital transformation. The investment and adoption of cloud services and autonomous data management signal a shift towards seamless passenger experiences—from ticket purchase to train exit. The aim is clear: minimise surprises, ensure safety and deliver on-time services. SKF sees digitalisation as the catalyst, transforming manual processes into a realm of predictability and reliability.

For rail to unleash its full potential as a catalyst for interconnected, decarbonised, and socially inclusive mobility, leveraging the abundance of industry data is imperative. SKF recognises the power of turning data into actionable insights, especially in the safety-relevant domain of bogie systems – the heartbeat of rail-going vehicles.

Smart on-board sensors, a testament to SKF's commitment to technological innovation, gather and deliver data from wheel and axle-box bearings. This data becomes the foundation for informed decision-making, providing operators with insights into potential maintenance issues before they manifest. SKF's expertise shines in turning recorded data into actionable insights, from anomaly detection to recommended actions, setting the benchmark for bogie monitoring solutions.

Solutions, Systems, Ecosystems

To unlock the full potential of rail advancements, the industry must embrace collaboration. Companies are urged to form partner ecosystems, pooling diverse skills to drive innovation collectively. Tackling challenges like workforce shortages and embracing

new technologies, such as hydrogen fuel cells, demands a united effort. SKF envisions a rail revolution, pioneering integration for a decarbonised transport and logistics sector.

Enter the Railway Business Transformation tool – a comprehensive solution beyond digital intricacies. This initiative focuses on forming knowledge-sharing networks rather than just digital threads. It advocates for a collaborative approach to enrich the industry's collective expertise, helping operators extract the best from their fleets.

The Railway Business Transformation takes a holistic stance, managing data integration, facilitating sharing and ensuring cyber security. It's not just about digital threads; it's about intertwining knowledge threads that weave through the entire rail community. This approach offers valuable insights into orders, service contracts, analytics and purchasing trends.

The ultimate aim is to enhance fleet efficiency and operation, contributing tangibly to a safe and sustainable future.

For more information visit our website by clicking [here](#) or email us railways@skf.com



Railvolutionary

A fresh take on performance

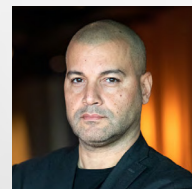
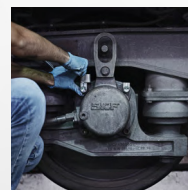
The industry is moving towards performance-based contracts, departing from traditional models for sustained support and reliability. SKF is at the forefront.

A subscription-based contract with a German rail provider showcases enhanced customer confidence, reliability, and logistics. In China, a metro system facing bearing maintenance challenges transitioned to a performance-based contract, incorporating an online monitoring system for real-time bearing health data. This proactive approach resulted in significant cost savings, extended maintenance intervals, and improved safety. Partnerships in this model involve shared

risk and reward, emphasizing clear communication and well-defined performance metrics. SKF's comprehensive value chain provides end-to-end support, from product selection to services like remanufacturing and design optimization.

Watch a webinar on the subject with SKF's Maurizio Giovannelli to see how we are redefining rail operations, leading to efficiency, safety, and financial benefits for operators navigating the dynamic landscape of modern rail.

Click the QR code to see the webinar in full now!



Webinar