

Olympus



Facilitating Proactive Maintenance of Railway Assets with Videoscope Inspection

Railway transportation is faster and more connected than ever. To maintain safety and uptime, it is imperative to regularly check for flaws and defects in railway systems.

Olympus IPLEX™ videoscopes are widely used by the railway industry around the globe. IPLEX videoscopes assist inspectors and

inspection service providers with their remote visual inspection needs during initial development, manufacturing, maintenance and the repair of railway vehicles and infrastructure. An IPLEX videoscope is a reliable and efficient visual inspection solution for many railway industry applications, including gearboxes, hollow axles, horizontal shafts, motors, bogie side frames, tracks, pillow cushions, shock absorber springs, railway infrastructures and air-conditioning systems.

Adding an IPLEX videoscope to your railway inspection toolbox provides numerous benefits, including:

- On-site internal visual inspection without costly strip down and disassembly
- Longer periods between scheduled inspections
- Accurate planning and scheduling of maintenance activities
- Condition monitoring and recording of internal components throughout the

- asset life cycle
- Improved predictive maintenance planning, including the need for parts, specialised tools, and skilled workers

IPLEX™ videoscopes have an array of specialised features that enhance many applications:

Innovative Imaging

For more detailed inspections in large, expansive spaces, the IPLEX GX/GT videoscope's LED light source is 30% brighter than its predecessor (the IPLEX RX videoscope).

Clear View in Oily Environments

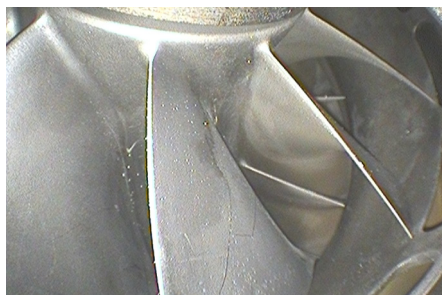
An innovative oil-clearing tip adaptor features grooves that use capillary action to draw oil away from the lens, maintaining clear images without having to stop inspections and retract the scope to wipe oil off the lens.

One Tool, Many Jobs

Change between white and ultraviolet light sources and interchangeable scopes with a variety of diameters and lengths to suit a wide range of inspection applications.

Easy to Use

A touchscreen and hot key controls enable easy operation. A multiple-position function enables you to position the screen where it's comfortable for you. The



IPLEX GX/GT videoscope



IPLEX RX/RT videoscope (predecessor)

display features bright and clear images with smart video.

Tested to Be Tough

Designed to meet IP65 standards for dust and water resistance and built to pass U.S. Department of Defense testing (MIL-STD) for protection against:

- Drops of up to 1.2m (4 feet)
- Vibration
- Blowing rain
- Dust
- High humidity
- Salt fog
- Freezing rain
- Electromagnetic environments
- Explosive atmospheres

Crisp Images and Powerful Measurement Tools

IPLEX videoscopes feature a noise-reduction algorithm to make it easier to locate problems and defects in dark areas. Standard scalar measurement enables you to size objects using a reference defect. Upgrade to the stereo measurement option to size objects using precise 3D co-ordinates.

OLYMPUS

For inquiries - contact [olympus-ims.com/contact-us](https://www.olympus-ims.com/contact-us)



Stay on Track with Proactive Railway Maintenance

IPLEX GX/GT – All on Board for Fast, Effective Railway Inspection

Railway transportation is faster and more connected than ever, but to maintain safety and uptime, it is imperative to regularly check for flaws and defects in railway systems.

The IPLEX GX/GT videoscope is a tough, reliable, and efficient visual inspection solution that has everything for a wide range of railway inspection tasks including gearboxes, hollow axles, horizontal shafts, motors, bogie side frames, tracks, pillow cushions, shock absorber springs, railway infrastructures, and air conditioning systems. Add an easy-to-use IPLEX GX/GT to your railway inspection toolbox today to immediately benefit from:



- **Onsite internal visual inspection without costly strip down and disassembly**
- **Accurate maintenance planning and scheduling with longer periods between inspections**
- **Condition monitoring and recording of internal components throughout the asset life cycle**

 www.olympus-ims.com/en/rvi-products/ipler-gx