

## EMS MULTI-TRACK NATURAL MATTING



LUL APPROVED ☒

### Data Sheet

#### Application

This product has been specifically designed to be used in all LU applications where traffic enters a station from more than one direction. It utilizes an exclusive halogen free natural rubber infill, with low smoke and toxic fume emissions. It has been successfully trialed at Warren Street station.

#### Efficiency

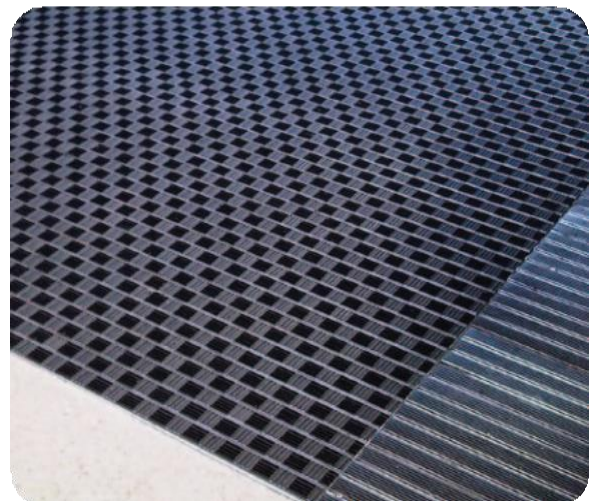
Unlike any other matting before it, the innovative design allows every footfall taken on the mat maximum grip – NO MATTER WHICH DIRECTION THE PERSON IS WALKING. Due to the innovative channel sections, debris is collected below the surface of the mat and the open channel with drainage holes provide an excellent drainage facility; this results in less dirt and moisture on the top of the mat that can be tracked into the station by foot traffic.

#### Sustainability

The aluminium is not only efficient but is constructed from over 90% recycled material, making it a market leader in sustainability. On top of that the rubber infill is 100% natural.

#### Maintenance

The matting can be maintained as part of a normal cleaning regime without having to be removed from situ which can cause damage and warping to matting. The infill strips are replaceable; this can be carried out on site by inhouse maintenance, again without removing the mat.



Trialled, tested and approved  
at Warren Street Station

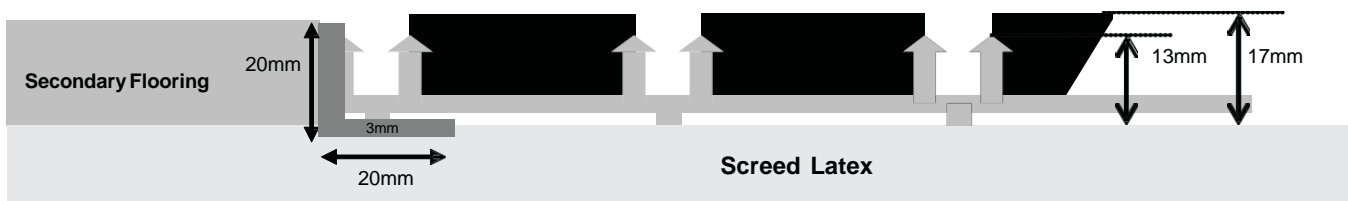
NBS: EMS Multi-track Natural Matting

N10 General Fixtures/Furnishings/Equipment 300 Entrance matting

Solid aluminium extrusion entrance matting system with a multi-directional ribbed rubber insert.

- a) Manufacturer: Entrance Matting Systems Limited
- b) Reference: EMS Multi-track Natural matting, standard profile
- c) Frame: 20mm x 20mm x 3mm aluminium section (to suit nominal 20mm recess).  
Fixed angle/mitred
- d) Grade: Extra Heavy Contract, section 12 compliant
- e) Infills: EMS Halogen free Low smoke and toxic fume emission rubber, colour Black
- f) Overall dimensions shall be as indicated on the Design Drawings
- g) Overall height: Nominal 17mm

## Standard Profile



## Technical Specification

Infill Composition	<b>Halogen free Low smoke and toxic fume emission rubber.</b>
Extrusion Composition	<b>Over 90% recycled aluminium.</b>
Infill Thickness	<b>9mm</b>
Max. available extrusion width	<b>4000mm</b>
Total Height	<b>17mm</b>
Total Weight (Kg/Sqm)	<b>18</b>
Infill width	<b>34mm</b>
Debris Channel width	<b>7mm</b>
Application	<b>Underground stations. Wheeled traffic. Under section 12.</b>
Flammability	<b>BS476 Part 12 approved.</b>

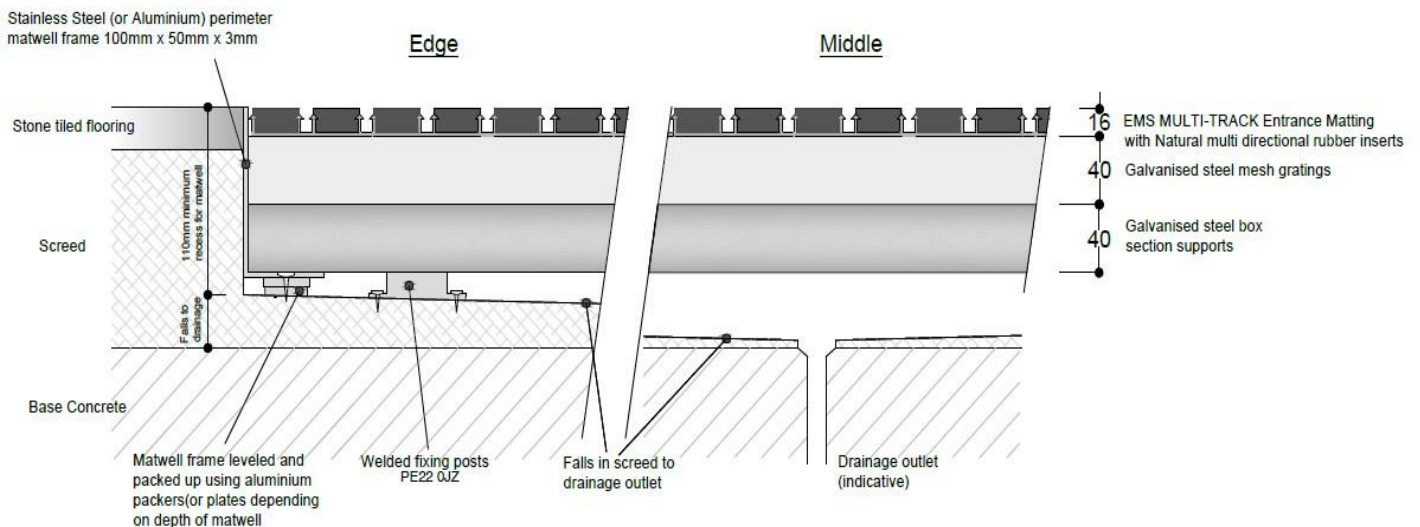
EMS Ltd: 01205761757 [info@entrance-matting.com](mailto:info@entrance-matting.com) [www.entrance-matting.com](http://www.entrance-matting.com)

## Properties

Table 2.0. Summary of data  
on **Natural-FR Standard**

		Natural FR	Requirement
Heat release rate (MAHRE)	ISO 5660-1	29	Max. 60
Flame Spread(CHF)	ISO 9239-1	>10.8	Min.8
Smoke density,Ds max	ISO 5659-2	97	Max.150
Smoke density, A0	BS6853:1999 Annex D8.6	314	Max.350
Flammability, (LOI) %	ISO 4589-2	52.3	>40 (LUL)
Smoke toxicity, CITg	ISO 5659-2	0.22	Max.1.5
Dry Slip,PTV	BS 7976-2	58	+36
Wet slip,PTV	BS 7976-2	44	+36
Four months after installation – Dry	BS 7976-2	64	+36
Four months after installation - Wet	BS 7976-2	43	+36
Shore Hardness	BS ISO 48:2010	95	

## Typical Matwell detail with drainage



Tried, tested and proven at:

Warren Street, Canary Wharf, Liverpool Street, Highbury & Islington, Vauxhall among others