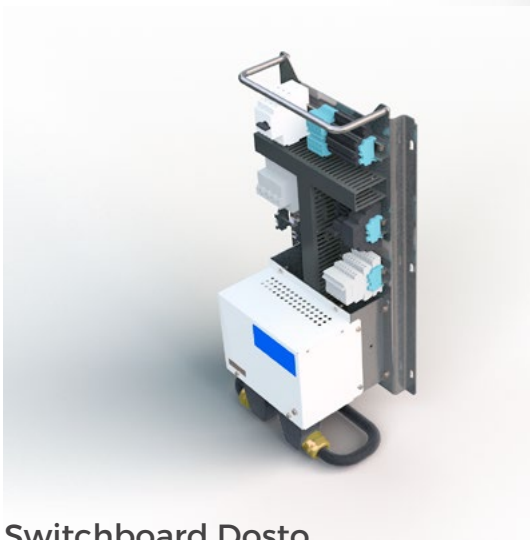


# K15-D

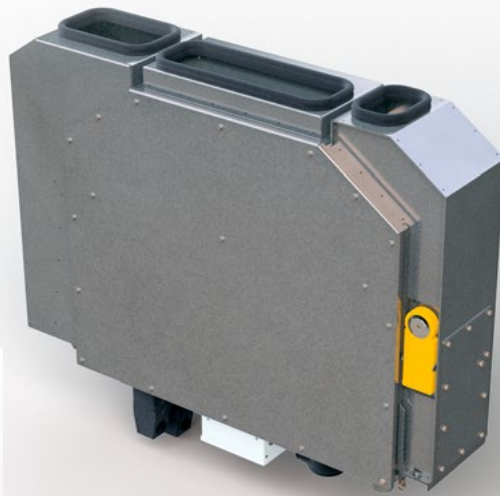
## Doubledecker Driver's Cab HVAC Split system

---

Plug-in air handling unit for driver cabs. Especially designed for the requirements of this application it offers proven reliability and performance. This Unit can be connected to the refrigerant circuit of the RVKE 126-D via flexible hoses with quick fitting couplings and is the perfect solution for double deck coaches.



Switchboard Dosto



# Technical data

## K15-D Doubledecker Driver's Cab HVAC Spilt system

<b>Customer   Platform</b>	Vossloh Kiepe / Deutsche Bahn   BA761.0, 761.2
<b>City of operation</b>	Hessen, Germany
<b>Cooling capacity</b>	5,0 kW
<b>Heating capacity</b>	2,0 kW
<b>Air Flow</b>	700 m <sup>3</sup> /h
<b>Length   Width   Height</b>	263 mm   911 mm   808 mm
<b>Weight</b>	42 kg
<b>Power supply</b>	400 V-3-50 Hz 24 V DC
<b>Summer conditions</b> - outside	35 °C
<b>Winter conditions</b> - outside	-20 °C

