

900RAIL PUCK

900Rail Puck is a high-durability, energy-efficient rail-mounted lighting solution to increase safety within the rail industry. It is engineered specifically for pathway illumination along railway lines, providing enhanced visibility and safety for railway personnel without contributing to light pollution or disrupting rail operations.

KEY FEATURES:



**ENHANCED
SAFETY**



**PLUG-AND-PLAY
INSTALLATION**



**NO LIGHT
POLLUTION**



**COST-EFFECTIVE
SOLUTION**



**COVER UP-TO
600 METERS**



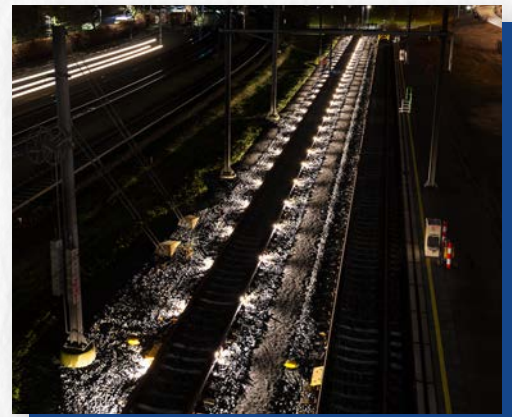
**RELIABLE
PERFORMANCE**

BENEFITS OF PUCK

Enhances worker safety by clearly illuminating railway pathways without causing glare or light pollution

Installs quickly and securely without heavy tools or damage to the rail infrastructure.

Built to last, with rugged, waterproof construction and low energy consumption for long-term reliability.



OPERATION & FUNCTION

- Pathway Illumination
- Non-Intrusive Design
- Asymmetric Light Beam
- Plug-and-Play Connectivity
- Redundant Power Setup
- Remote Power Supply

PRODUCT SPECIFICATIONS:

ATTRIBUTE	VALUE
Power	2.8W
Colour Temperature	3000 k
Colour rendering index	CRI>80
Luminous flux	267 lm
Efficacy	95 lm/W
Light source	CREE XP-G3
Operating voltage	36 V DC
Light distribution	Asymmetric beam
Dimensions (L x W x H)	138 x 28 x 80 mm
Weight	280 g
IK rating	IK10
Ingress protection	IP66/68
Life expectancy at 25°C	60.000 hrs (L80B10)
Operating temperature	-40 ... 70°C

OTHER FEATURES

Purpose-Built for Railway Environments **Specifically designed for railway**

Personnel safety by improving ground visibility along rail pathways.

Installed without structural modifications or civil engineering work.

Fast, Tool-Efficient Installation

Plug-and-play system: no soldering, drilling, or rail modifications needed.

Installs within minutes, ideal for temporary or permanent setups.

Low Energy, High Output

Delivers bright and focused lighting with minimal energy consumption (only 2.8W).

Significantly reduces operating costs over its long service life.



SEE RESULTS
TODAY!

Speak to one of our specialists today!

0845 600 4 900 sales@ninehundred.co.uk

Railpuck luminaire is specially designed for safety purposes by illuminating pathways along railway lines. Railpucks illuminate the pathway which enables employees to see where they must walk. As a result, there is a much lower risk of tripping. The light is directed downwards which results in minimal light pollution to the surroundings. Railpuck is suitable for any railway yard, storage sidings or local rails.

Railpuck is a Class III luminaire which is fastened to the outside of the rails. The luminaire fits perfectly into the web of the rail. Due to Railpuck's special design the light is directed downwards. This prevents drivers in train cabs and other employees from being blinded.

Railpuck is clamped to the rails with a luminaire clamp. If required, the luminaire clamp can be fastened to Railpuck with an anti-theft screw.

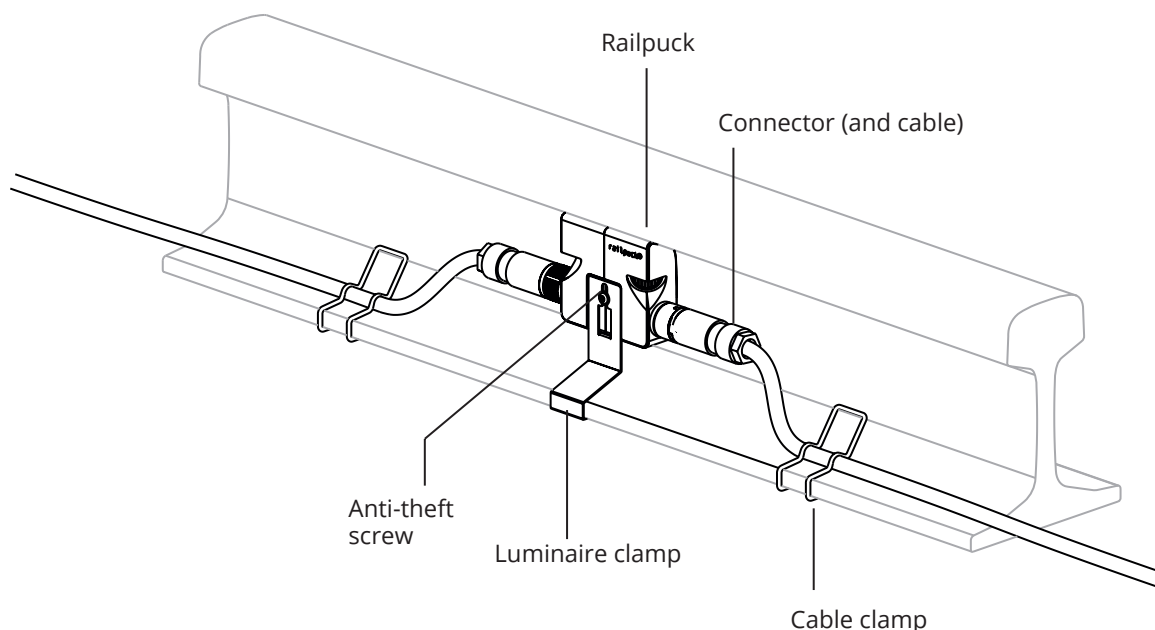
Railpuck luminaires are equipped with through-

wiring, allowing connections of up to 300 metres. One power supply can feed two lines of 300 metres each. For maximum reliability two drivers per line are used for a redundant circuit.

The plug-and-play connection system enables easy installation of Railpuck. It is also possible to remove and re-use Railpuck without causing permanent or visible damage to the rails or surrounding area.

Specially designed cable mounting brackets ensure that cables are neatly and securely fixed in the web of the rail. The power supply contains the 36Vdc driver and is safely located away from the railway rails. Maintenance can therefore be carried out safely without directly interfering with the railway lines.

The robust luminaire housing (IK10) and high-quality light source make this a cost-saving and durable product. Railpuck can be used permanently and as a temporary solution. Railpuck has been certified by DEKRA.



SEE RESULTS
TODAY!

Speak to one of our specialists today!

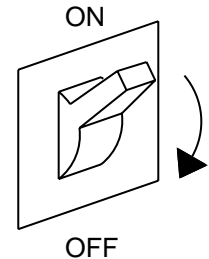
0845 600 4 900 sales@ninehundred.co.uk



The electrical system must be completely disconnected from any power connection and any mains power before carrying out installation work!



Risk of personal injury if installed incorrectly!
Failure to observe the installation instructions and environmental conditions may lead to dangerous situations when working with electricity.



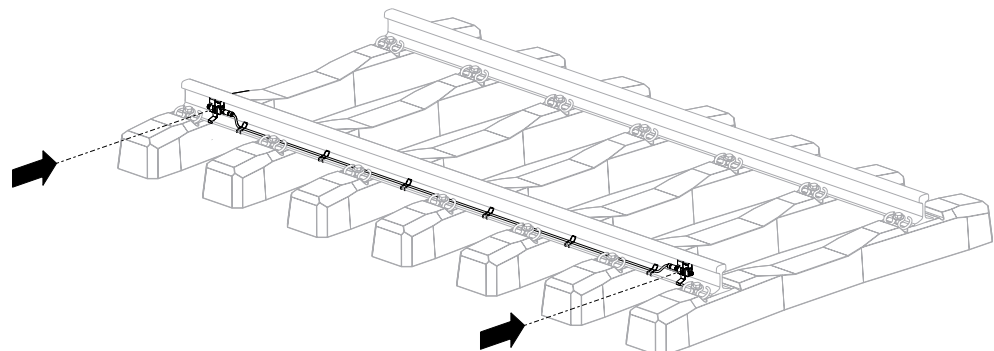
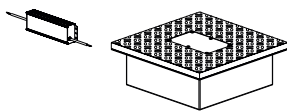
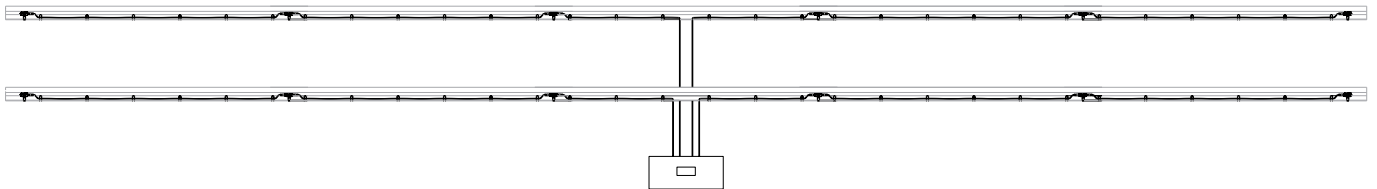
DETERMINE THE POSITIONS OF THE POWER SUPPLY, DRIVERS, LUMINAIRE CLAMPS, RAILPUCKS, CABLE CLAMPS

Enhances worker safety by clearly illuminating railway pathways without causing glare or light pollutions.

This targeted illumination ensures clear visibility for personnel while preserving dark-sky conditions and avoiding distraction for train operators.



CAUTION! Determine the positions of the power supply, drivers, luminaire clamps, Railpucks and cable clamps. To this purpose, always refer to the project plan for exact positions.



SEE RESULTS
TODAY!

Speak to one of our specialists today!

0845 600 4 900 sales@ninehundred.co.uk